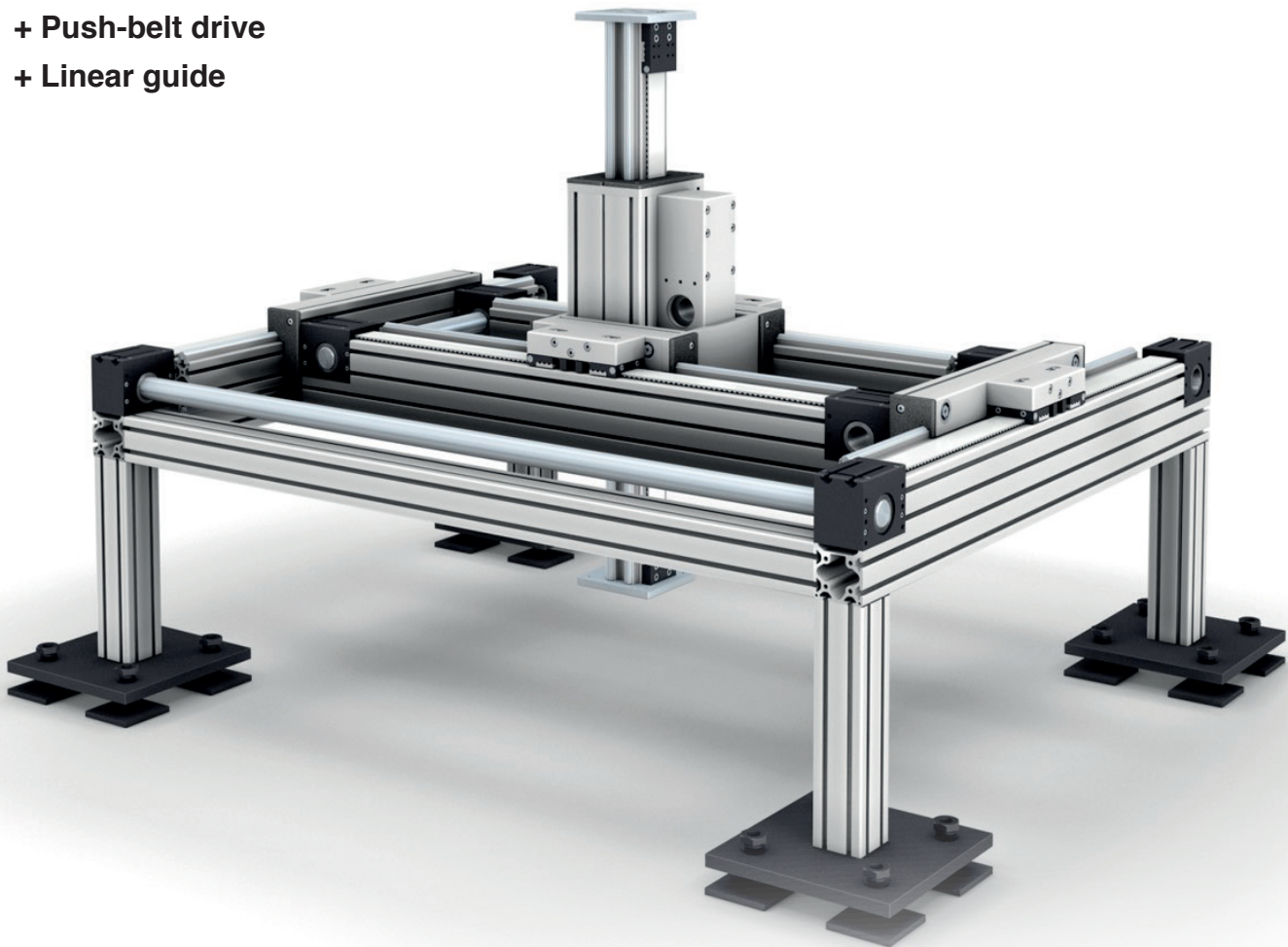


# LINEAR ACTUATORS

Individually configured from our modular system

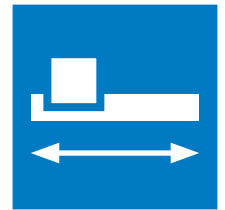
- + Belt drive
- + Screw drive
- + Push-belt drive
- + Linear guide



 **MayTec**<sup>®</sup>

[www.maytec.de](http://www.maytec.de)

# Linear Actuators

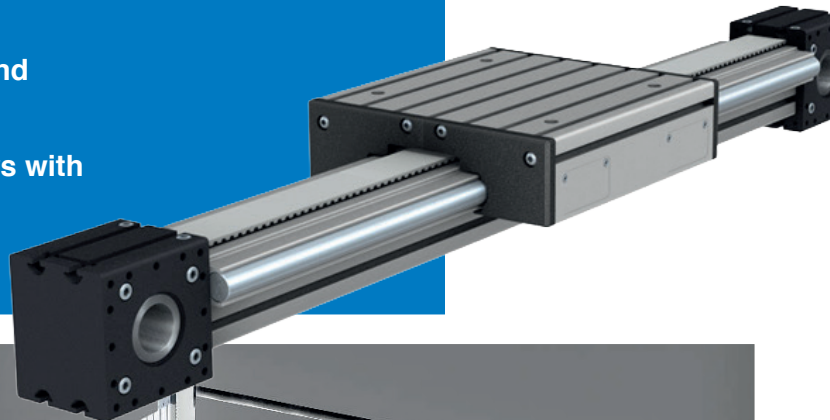


## The right axis for every application.

With our modular system, you can realize both simple and highly complex linear units tailored to your specific requirements and area of use. You decide whether you need ready-to-install axes, complete units, or individual components.

### Your benefits at a glance:

- Heavy-duty aluminum extruded profiles combined with a guide and carriage system
- MayTec actuators are easy to maintain and can be serviced without removal
- Drive units: Toothed belts and ball screws with electric motors or pneumatic cylinders
- 2-axis, 3-axis, or multi-axis systems



### Configuration options:

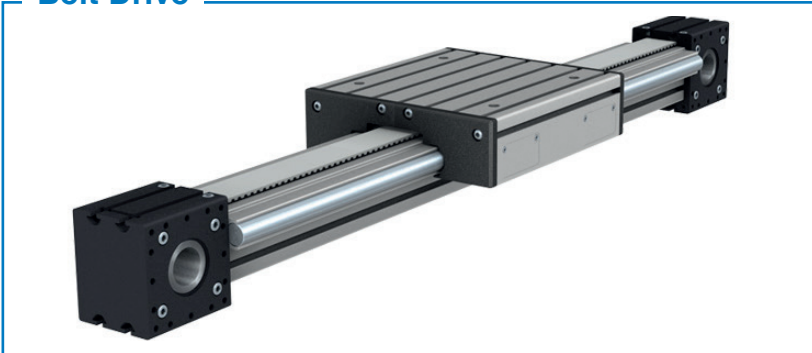
- Single, parallel, or multi-axis/gantry configurations
- Dual carriages on one rail
- Side-mounting or Omega-Configuration
- Telescopic configurations
- Special long belt-driven linear systems (over 6 m / 236 in)



# Product Overview



## Belt Drive



### Overview:

- Single- and multi-axis drives
- Load capacities: 4.5 – 450 kg / 9.9 – 992 lbs
- Internal or external carriages
- AT10 toothed belt with simple tension adjustment and backlash-free operation

## Screw Drive



### Overview:

- Single- and multi-axis drives
- Load capacities: 113 – 450 kg / 250 – 992 lbs
- Internal or external carriages
- Long service life; minimal noise; low maintenance

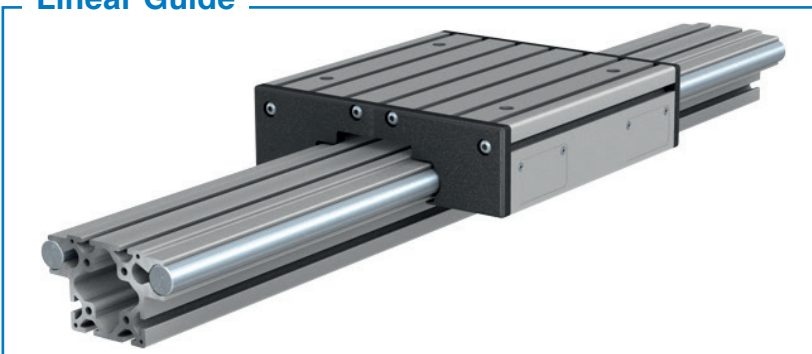
## Pusher Belt Drive



### Overview:

- Single-axis high-speed actuators
- Torque capacity: 80 – 480 In-kg / 177 – 1062 In-lbs
- Particularly suitable for confined spaces
- Available in custom lengths

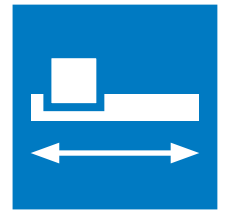
## Linear Guide



### Overview:

- Sliding, C-rail, and roller guides
- Load capacities ranging from 4.5 kg / 9.9 lbs to 360 kg / 793 lbs
- Single- or multi-axis use
- Can be mounted in any orientation

# Belt Drive



**Toothed belt driven linear systems for high speeds and long travel distances.**

Toothed belt linear systems are ideal for material handling and positioning tasks that require high speeds and travel distances over 6 m / 236 in.



**Travel distance > 6 m / 236 in**  
Ideal for long strokes in large-scale plants



**Carriage mounting positions**  
upright, rotated, or in an omega configuration



**High speed**  
Optimized for dynamic linear motion

## Technical Specifications

### AT10 tooth profile belts

Simple tension adjustment and backlash-free operation – various belt materials available.

### Carriage

Ideal for heavy loads and flexible mounting options. End caps with lubrication ports and brushes for long-term, low-maintenance operation.

### Easy maintenance

Maintenance without removing the unit from the machine – minimal downtime, maximum uptime.

## Product Benefits

### Operation & Performance

- High speeds across the entire stroke range
- Long travel distances over 6 m / 236 in with no loss of quality
- Minimal noise and long service life
- Multiple belt material options depending on the application

### Flexibility & Installation

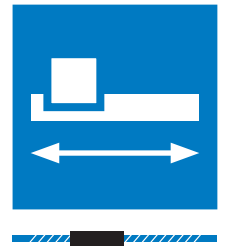
- Corrosion-resistant component options
- One-piece carriage and rail construction
- Single- and multi-axis integration possible



**Everything from a single source.**

*Our linear systems, aluminum profiles, and conveyor belts are based on the uniform 8-mm T-slot system – for easy and fast overall configuration.*

# Screw Drive



## Linear axes with profile rail guidance and ball screw drive for precise positioning and transport tasks.

MayTec spindle drives are excellent for applications where precision, high load capacity, and reliability are paramount. They integrate seamlessly into single- and multi-axis systems and offer long service life with minimal noise and low maintenance.



**Can be integrated in multiple systems**  
Easy integration into complex systems



**Fixed & floating bearings**  
Double and single bearing configurations



**High durability**  
Long runtime, minimal downtime

## Technical Specifications

All in one compact unit – guide, drive, and structure fully integrated.

Carriage end covers with lubrication ports and integrated brushes.

Configuration with hardened and ground rollers and guide shafts for maximum precision.

Optional corrosion-resistant components.

## Product Benefits

### Operation & Performance

- High efficiency at moderate, easily controllable speeds
- Low torque requirements
- Minimal noise even during continuous operation
- Long service life

### Flexibility & Installation

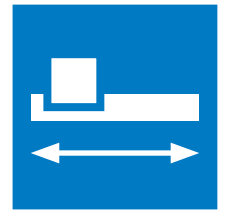
- Custom mountings available upon request
- Corrosion-resistant component options available
- Easy integration into complex systems
- Low maintenance requirements thanks to robust construction



**Everything from a single source.**

*Our linear systems, aluminum profiles, and conveyor belts are based on the uniform 8-mm T-slot system – for easy and fast overall configuration.*

# Pusher Belt Drive



**Economical drive solution for space-critical and performance-optimized applications.**

MayTec push-belt drives are used when the load is supported by separate linear guides. They offer a cost-effective alternative, especially in confined spaces or where high speeds are required.



**High speed**  
Suitable for dynamic linear motion



**Space-saving**  
Ideal for environments with limited space



**Cost-effective**  
More economical than conventional drives

## Applications

MayTec push-belt drives provide an economical and flexible alternative, particularly where conventional linear drives are not optimal due to space constraints, cost, or performance limits.

Thanks to custom-length versions, push belt drives are also suitable for large-scale machine systems and long travel distances.  
Corrosion-resistant component options available

## Product Benefits

### Operation & Installation

- Suitable for high speeds in all applications
- Installation and operation in any orientation
- Ideal for confined installation situations

### Cost-Effectiveness & Design

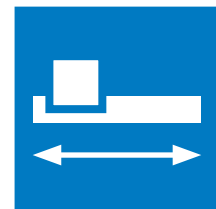
- More cost-effective than conventional drives
- Custom lengths available
- Corrosion-resistant component options



**Everything from a single source.**

*Our linear systems, aluminum profiles, and conveyor belts are based on the uniform 8-mm T-slot system – for easy and fast overall configuration.*

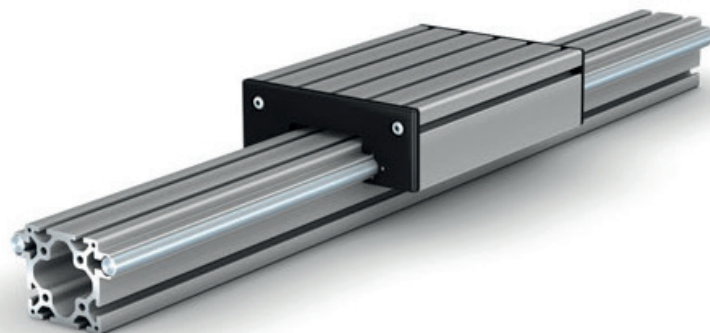
# Linear Guide



## Roller guides for standard linear drive applications – precise, robust, and durable.

MayTec roller linear guides are used in classic linear drive applications where the load is carried by two or more linear guides and moved by a drive or spindle system.

Our roller guides offer an excellent, often more cost-effective and better-fitting alternative to conventional systems.



**Can be integrated into multi-axis systems**  
From single-axis to complex systems



**> 236 inch rail length**  
Slides and bearing shafts in custom lengths



**Cost-effective**  
An alternative to oversized systems

## Technical Specifications

### Hardened rollers & bearing shafts

Carriage rollers are hardened and ground – for precise and durable guidance.

### Special length > 6m / 236 inch

Carriages and rails available in special lengths – ideal for large plant layouts.

### Integrated scrapers

Carriage end covers with lubrication ports and integrated scraper brushes.

### One-piece design

All guide types feature a one-piece carriage and rail design – available in a corrosion-resistant version.

## Product Benefits

### Design & Quality

- Highest precision thanks to hardened components
- Durable, low-maintenance design
- Corrosion-resistant component options
- Integrated lubrication ports and wiper brushes

### Application & System

- Configurations ranging from single-axis to multi-axis
- Custom lengths over 6 m available
- Perfectly matched with MayTec belt drives
- Simplified design and assembly



**Everything from a single source.**

*Our linear systems, aluminum profiles, and conveyor belts are based on the uniform 8-mm T-slot system – for easy and fast overall configuration.*

Disclaimer: Subject to change without notice. Please ensure that you are always using the latest version. Version: Lineartechnik\_2026\_EN1.0



# MayTec®

Find your local sales partner  
from our partner network:



Think Global –

## Buy Local

[www.maytec.de](http://www.maytec.de)