

# MayLight up your profile



MayTec®

[www.maytec.de](http://www.maytec.de)

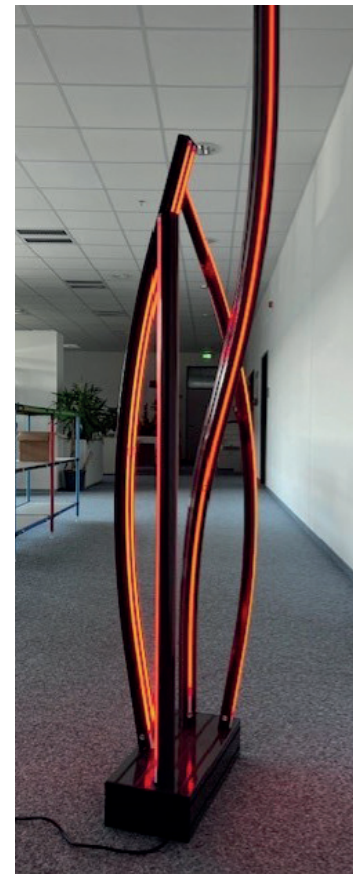
# MayLight

**More than just an LED strip in an aluminum profile.**

*It is your personal lighting designer – for industrial applications, modern room and workplace design, and the smart home sector.*

**The advantages of MayLight:**

- *The controller is specially designed for the MayTec E-slot of our profiles and can therefore be seamlessly integrated.*
- *Intelligent control via input signals, EnOcean light switches, or the free app.*
- *Perfect addition to the MayTec ecosystem offering virtually limitless design possibilities.*



# Controller Connections

Connect the controller using the following connectors:



Afterwards, connect the controller to the power supply and the LED strip as shown.

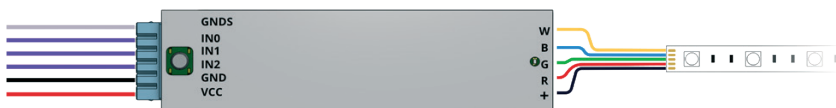
White High Bright



CCT

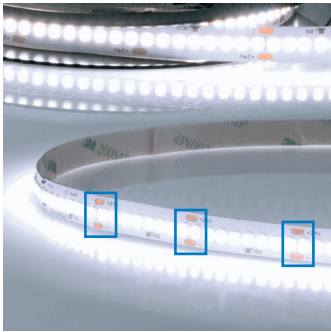


RGB-WW

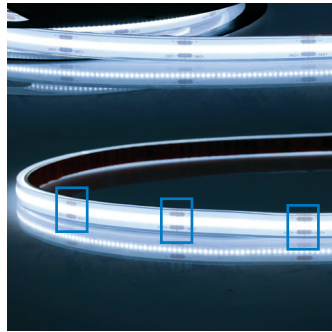


# Cutting

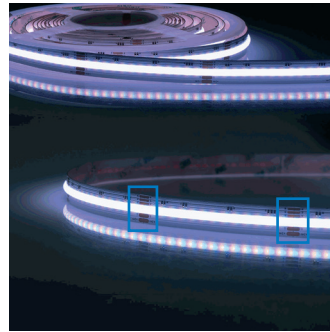
The strips can be cut at the marked lines where the terminals are exposed, using a sharp pair of scissors.



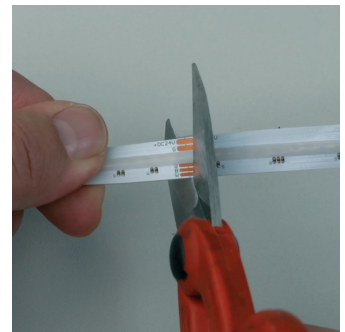
White High Bright



CCT



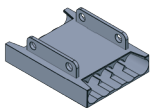
RGB-WW



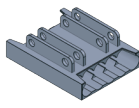
Example with RGB-WW

# Extending with a Contact Connector

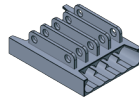
The strips can be extended at the exposed terminals using a contact connector. Place the connector onto the strip according to the strip's contact layout and carefully crimp it using the parallel crimping pliers available from us.



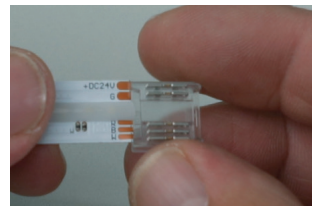
White High Bright



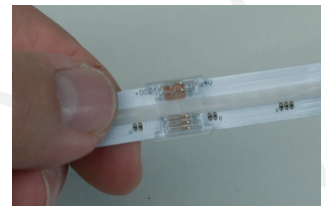
CCT



RGB-WW



Application: Attach the connector to the RGB-WW strip

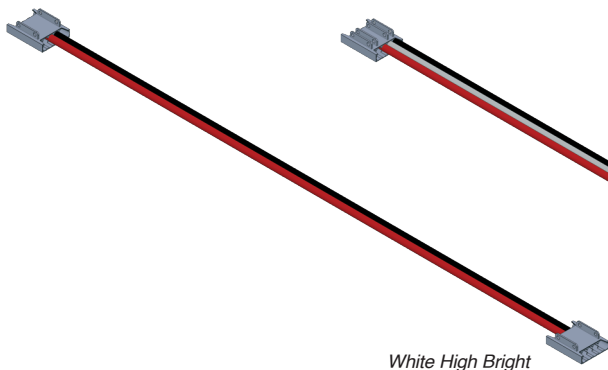


Result with RGB-WW strip

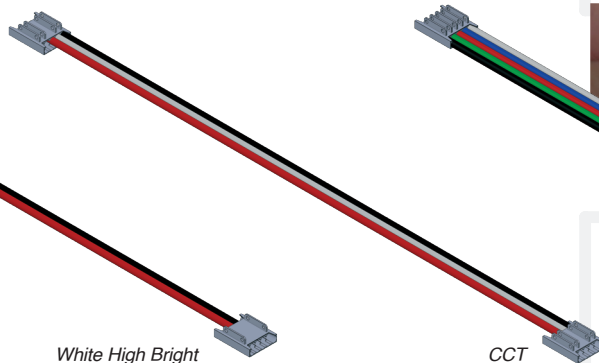
# Extending with a Universal Contact Cable Connector

See "Extending with a Contact Connector".

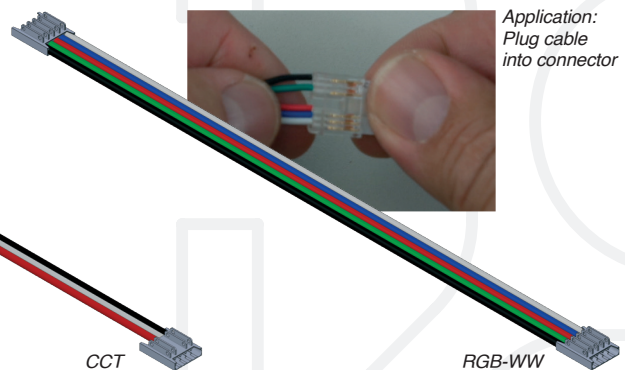
As an additional step, the connector must be connected to the cable according to the drawing.



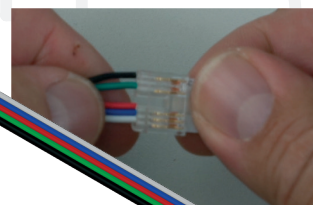
White High Bright



CCT



RGB-WW



Application: Plug cable into connector

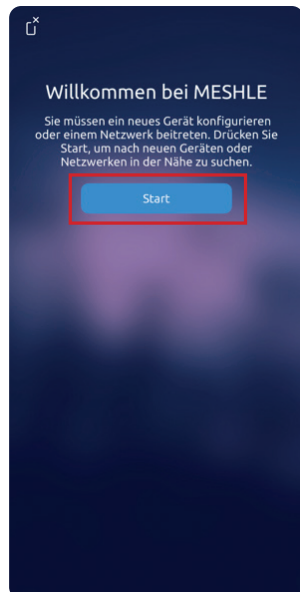
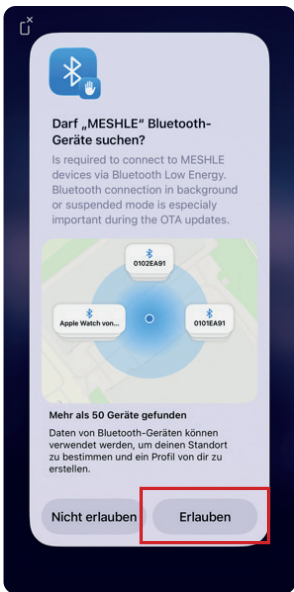
# MESHLE App Configuration



Download and install the app from the appropriate store.



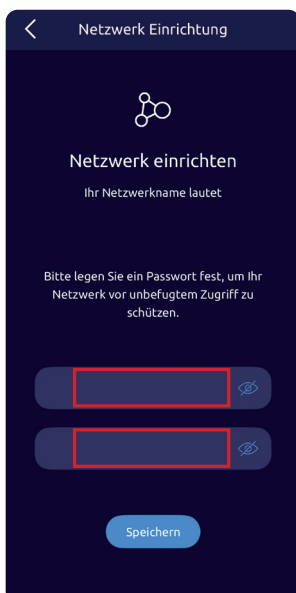
MESHLE App – See all functions.



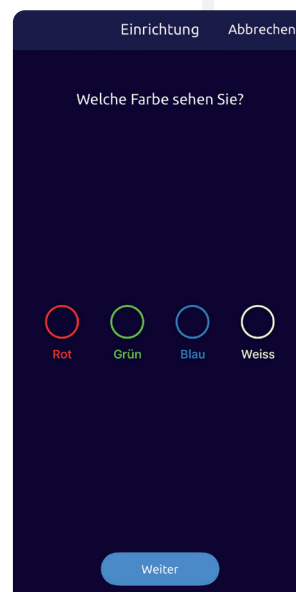
Set the mode according to the strip used:

Press and hold the button on the controller for 15 seconds. You can then switch between modes by simply pressing the button.

- “New device – colored light” LED strip flashes 4x (RGB-WW)
- “New device – white light” LED strip flashes 1x (White)
- “New device – CCT” LED strip flashes 2x (CCT)



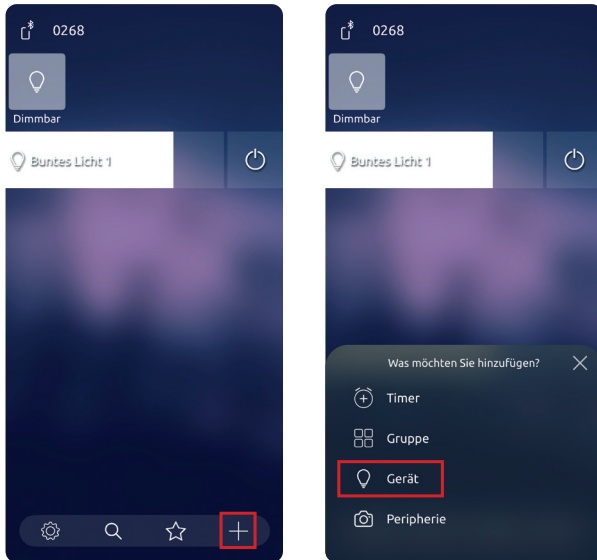
Assign any password, repeat it, and save it.



Now select the colors according to the colors that light up on the strip.

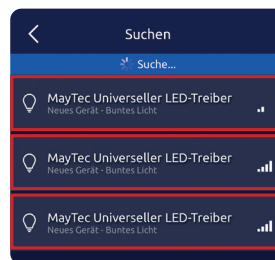
# Use multiple controllers

Getting Started: See "MESHLE App Configuration".



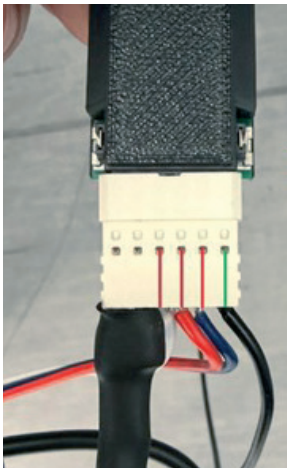
Additional controllers can be selected and configured via + and Device (see previous steps „MESHLE App Configuration“).

Multiple controllers will appear accordingly in the network search:

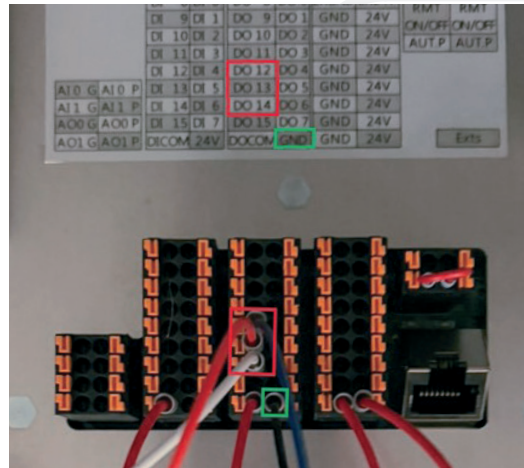


## Connection to an TM robot

### Connect the controller and the robot



The MayLight controller has three digital inputs. Connect the three DIs (digital inputs) of the power supply connector to the robot's three DOs (digital outputs) and the ground (GND).



Connect DO12, DO13, DO14, and GND as shown.

*Note: Outputs 12, 13, and 14 are user bits.*

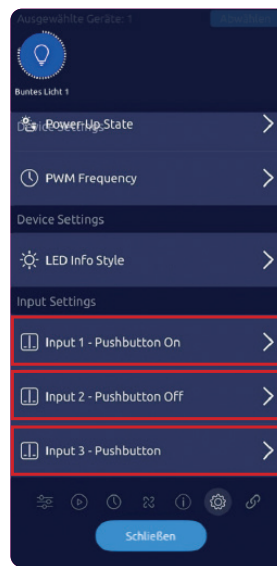
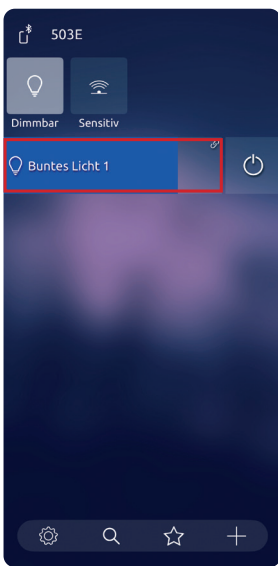
*These can be configured directly in the settings without a separate program.*

*These bits are continuously driven without delay. There are a total of six user-defined bits, ranging from DO10 to DO15.*

# Connection to an TM robot

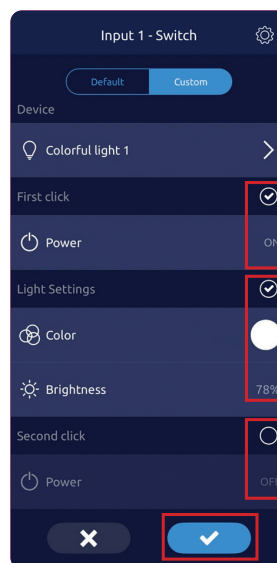
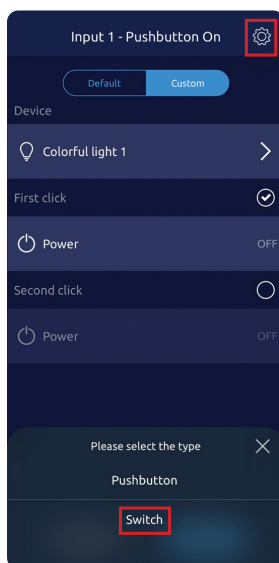
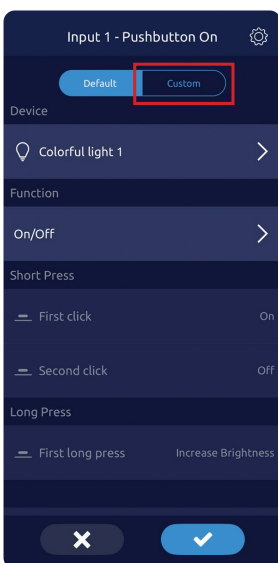
Next step: Configure the MESHLE App (see “MESHLE App Configuration”).

## Next steps in the MESHLE App



Follow the screenshots to configure the inputs in the app.

The following steps must be performed for all three inputs using the desired colors.



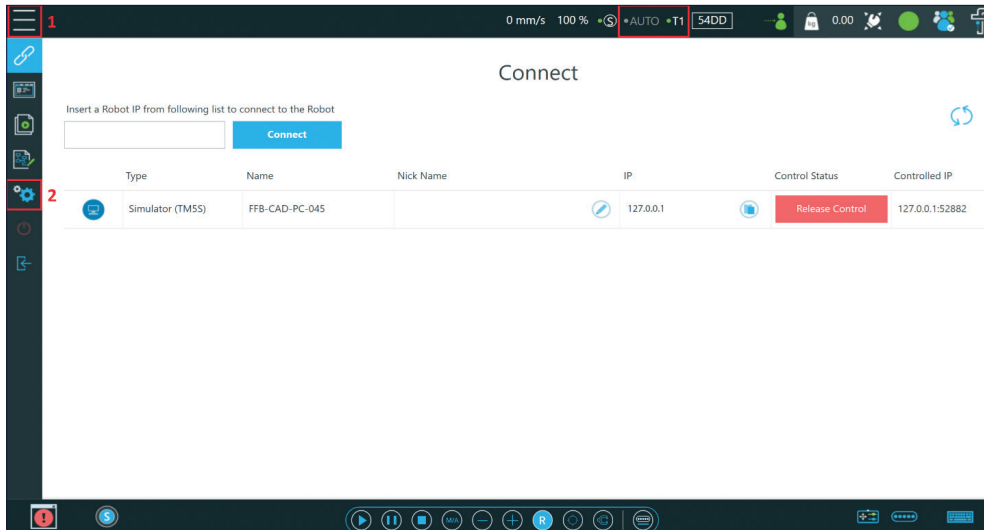
In Custom Mode, select  and *Switch*.

After this step, configure the settings shown in the screenshot on the right and confirm them.

Repeat these steps for the other two inputs with the desired colors.

# Connection to an TM robot

## Configuring the robot outputs



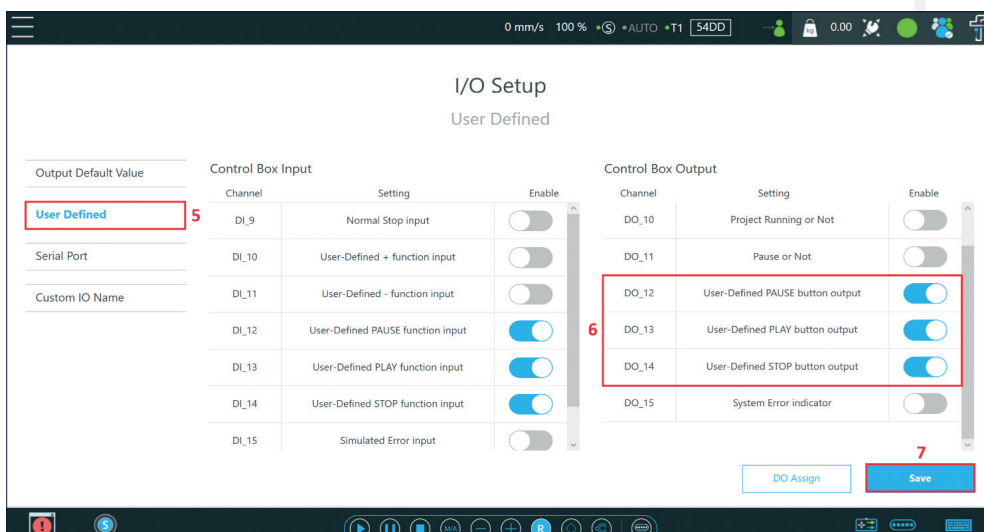
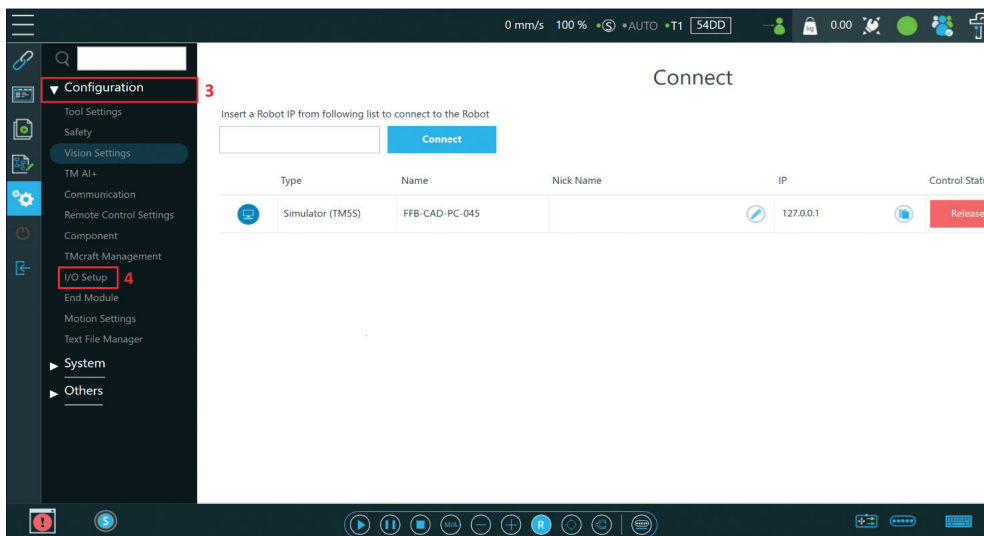
Follow the screenshots to configure the outputs.

Switch to manual mode!

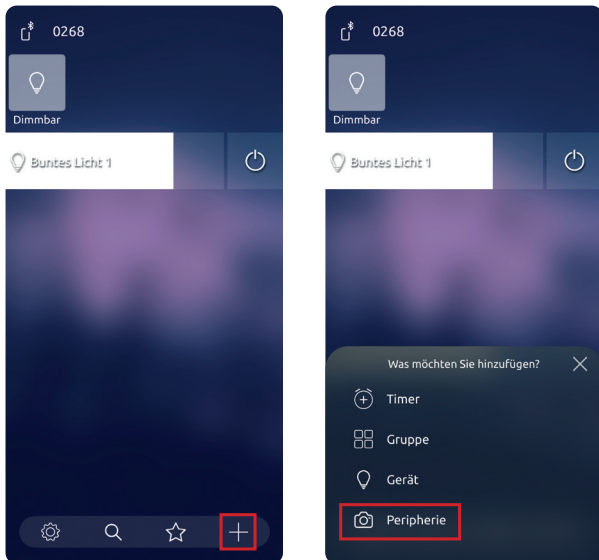
1. ☰ Menu
2. ⚙️ Configuration
3. Configuration
4. I/O Setup
5. User Define
6. Select outputs 12, 13, 14

In the following example, we use the MT robot's user bits to send the signals:

- Output 12: Program paused / Robot error – Red
- Output 13: Program running – Green
- Output 14: Robot ready – Blue



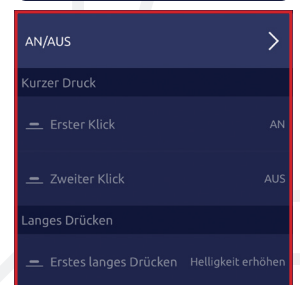
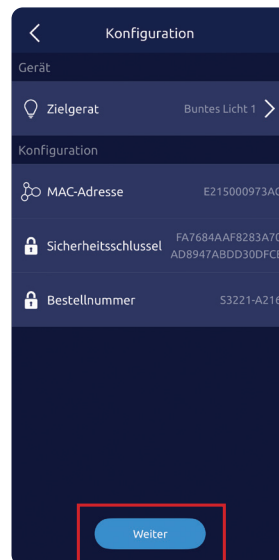
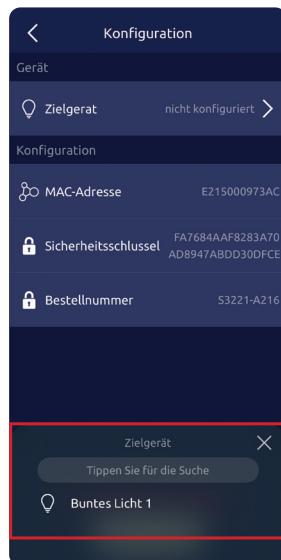
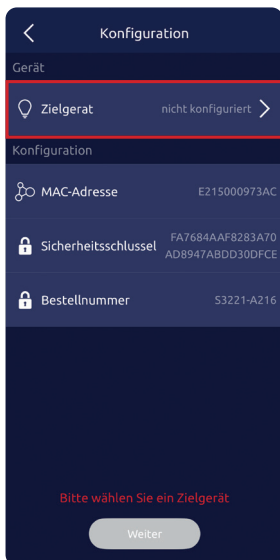
# EnOcean Button Configuration



The EnOcean light switch can be added via + and Peripherals.



Scan the QR code on the back of the switch.



# Technical specifications

## Controller

Integration	Seamlessly integrated into the profile (E-slot)
Input signal voltage	5 – 65 volts DC
Permissible voltage tolerance	+/- 5 %
Current consumption (no load)	max. 15 mA
Housing material	PLA
Protection class	IP20 ≈ NEMA 1
Humidity (relative humidity in the environment)	up to 85% non-condensing
Operating temperature	-20 °C to +45 °C / -4°F to 113 °F
Weight	0,011 kg

## QUESTIONS?

[mail@maytec.de](mailto:mail@maytec.de)  
[www.maytec.de](http://www.maytec.de)

## LED stripes

Integration	all	Compatible with all MayTec aluminum profiles with E-slot and F-slot
Color / Color temperature	High Bright	Single white light, dimmable / 6000K
	CCT	White light / adjustable color temperature / 2700K – 6500K
	RGB-WW	Full color selection (one color from the RGB spectrum) plus warm white / 3000K
Separation point	High Bright	33,33 mm with 8 SMDs each
	CCT	25 mm with 16 SMDs each
	RGB-WW	62,5 mm with 56 SMDs each
Dimensions (W / H / L)	High Bright	10 mm / 1 mm / 3 m or 20 m role
	CCT	10 mm / 1 mm / 5 m or 20 m role
	RGB-WW	12 mm / 2 mm / 5 m or 20 m role
Service life	High Bright	52000 h
	CCT	38000 h
	RGB-WW	38000 h
Power consumption	High Bright	32 W/m
	CCT	14 W/m
	RGB-WW	20 W/m
Rated voltage	all	24 V DC
Temperature	all	0 °C to +40 °C / 32 °F to 120 °F
Luminous flux	High Bright	4700 lm/m – suitable for workplaces (with unfiltered radiation)
	CCT	1420 lm/m
	RGB-WW	1250 lm/m
Protection class	all	IP20
Energy efficiency class	High Bright	C
	CCT	D
	RGB-WW	G

## Other

Control	1. MESHLE-App (free for iOS and Android) 2. EnOcean light switch (Connection via MESHLE-App) 3. Three configurable inputs
Power supply voltage	12 – 24 volts DC
Covering	Cover profiles for E-slot and F-slot, transparent
Applications	Industrial and private use

Disclaimer: Subject to change and errors excepted. Please ensure that you are always using the latest version. Version: MayLight\_2026\_EN1.1  
Hazard warnings: Electrical devices may only be installed and assembled by a qualified electrician. Failure to follow the installation instructions may result in fire or other hazards.



# MayTec®

Find your local sales partner  
from our partner network:



Think Global –  
**Buy Local**

[www.maytec.de](http://www.maytec.de)