

# MayLIFT

Precision  
meets  
ergonomics



 MayTec®

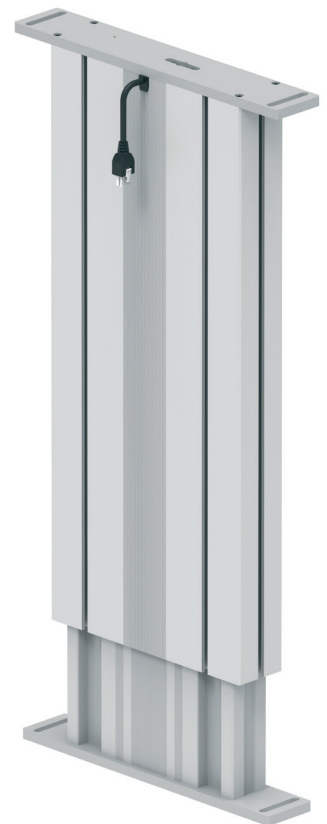
[www.maytec.de](http://www.maytec.de)

## Ergonomics, flexibility, and efficiency for every need.

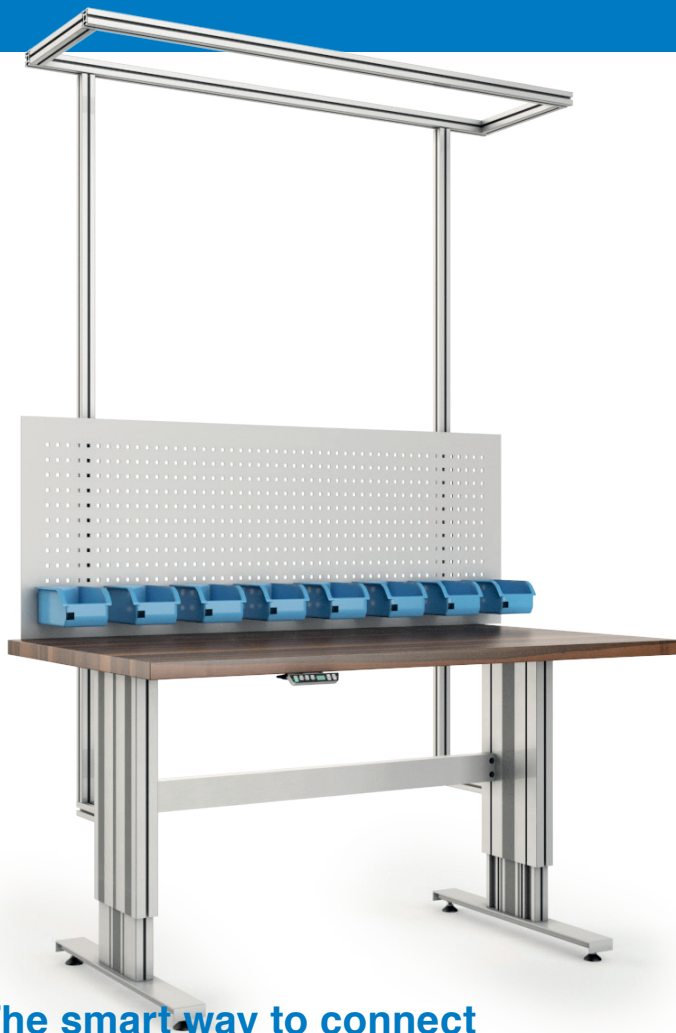
Whether in mechanical engineering, assembly, the medical field, or industrial workplaces: With our electric lifting columns, you can create ergonomic, flexible, and productive work environments that are tailored precisely to your needs.

### The advantages of MayLift:

- Various models in different price ranges.
- For ergonomic workstations – from the workbench to a complete automation system.
- Multiple lifting columns can be controlled synchronously (up to 12 columns).
- Optional battery solution with a replaceable battery for mobile, power-outlet-independent operation.
- Integrated motors for a sleek, space-saving system design.
- Key component for height-adjustable workstations within the MayTec ecosystem.



SL: for loads up to 200 kg / 440 lbs per column

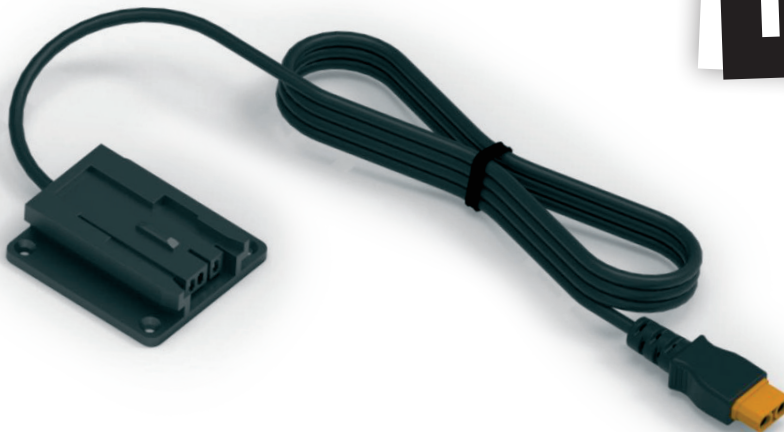


SC: for loads up to 150 kg / 330 lbs per column

## HIGHLIGHT

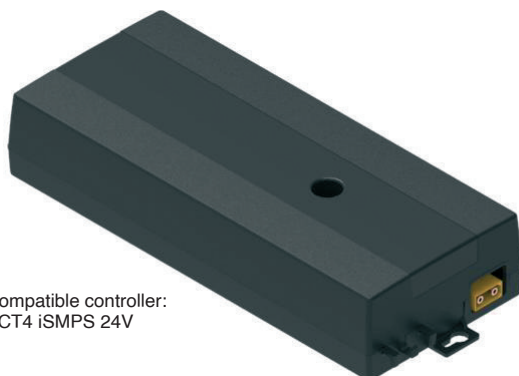
The mobile solution powered by a 28V battery – no outlet required.

**NEW!**



### Adapter shell for battery operation

- Currently compatible with the SL column.
- SCT4 iSMPS 24V controller.
- Controller connection cable: 1.8 m / 70.87 in.
- Secure screw mounting possible via four countersunk holes (Ø 4.8 mm / 0.19 in).
- Unique on the market: Compatible with standard 28 V rechargeable batteries from Würth, Milwaukee, and equivalent solutions.

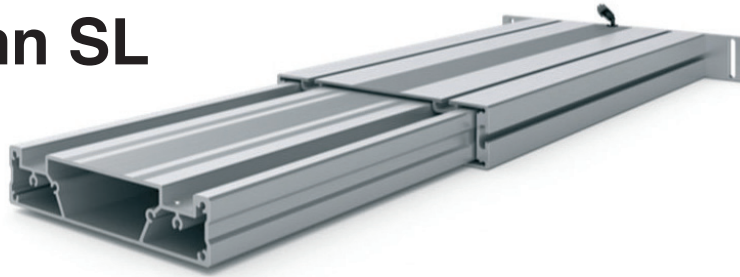


Compatible controller:  
SCT4 iSMPS 24V



## Technical data

### Lifting column SL



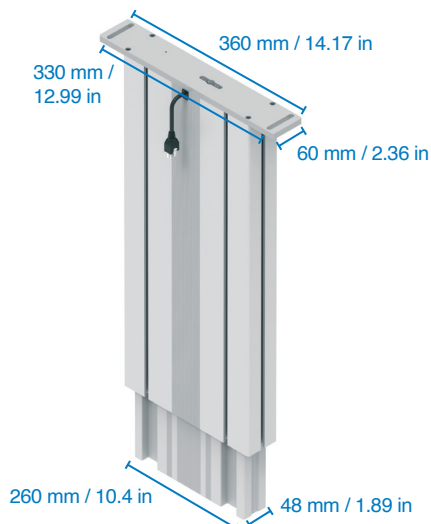
Colour	colourless anodised aluminium profiles
Lifting speed	12 mm/s / 0.47 in/s
Fitting length	630 mm / 24.80 in
Stroke length	400 mm / 15.75 in
Drive	internal spindle drive
Control	Compact-3-eco: Up to 3 lifting columns can be connected to a single control unit and synchronized SCT4 iSMPS 230V: for 4 lifting columns

Max. load for 1 lifting column	2,000 N = 200 kg / 440.93 lbs
Max. load for 2 lifting columns	4,000 N = 400 kg / 881.85 lbs
Max. load for 3 lifting columns	4,000 N = 400 kg / 881.85 lbs
Max. load for 4 lifting columns	10,000 N = 1.000 kg / 2204.62 lbs

Max. tensile load per column	50 N = 5 kg / 11.02 lbs
Max. static bending moment	$M_{bx_{stat}} = 1,200 \text{ Nm}$ $M_{by_{stat}} = 450 \text{ Nm}$
Max. dynamic bending moment	$M_{bx_{dyn}} = 300 \text{ Nm}$ $M_{by_{dyn}} = 150 \text{ Nm}$

Note Accessories and attachments available.

#### Dimensions



## Technical data

### Compact-3-eco Controller



Number of motor channels	3
Output power	360 W
Output voltage	24 V
Output amperage	15 A
Input voltage	EU: 207 – 253 V / 50 – 60 Hz US: 90 – 127 V / 50 – 60 Hz
Dimensions	264 x 103 x 37 mm / 10.40 x 4.01 x 1.46 in
Weight	550 g / 1.21 lbs
IP Protection class	IP 20
Memory locations	4
Tilt sensor	No
2-way communication	No
Control	Controlled via a pushbutton

#### Applied standards and guidelines

Approval	Germany and the U.S.
Electrical safety	EN 60335-1
EMC	EN 61000
Electrical safety	UL 60950

# Technical data

## Lifting column SC

MayLIFT



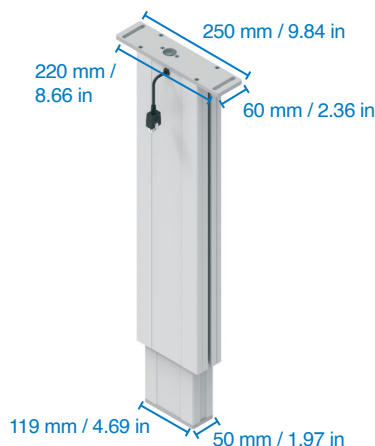
Colour	colourless anodised aluminium profiles
Lifting speed	20 mm/s / 0.79 in
Fitting length	645 mm / 25.39 in
Stroke length	420 mm / 16.54 in
Drive	internal spindle drive
Control	SCT 2 MDT: up to 2 lifting columns SCT 2 MDT: up to 4 lifting columns

Max. load for 1 lifting column	1.500 N = 150 kg / 330.70 lbs
Max. load for 2 lifting columns	3.000 N = 300 kg / 661.39 lbs
Max. load for 3 lifting columns	3.000 N = 300 kg / 661.39 lbs
Max. load for 4 lifting columns	4.000 N = 400 kg / 881.85 lbs

Max. tensile load per column	50 N
Max. static bending moment	$M_{bx\_stat} = 700 \text{ Nm}$ $M_{by\_stat} = 400 \text{ Nm}$
Max. dynamic bending moment	$M_{bx\_dyn} = 200 \text{ Nm}$ $M_{by\_dyn} = 150 \text{ Nm}$

Note The mounting slots on two sides (8 mm / 0.31 in wide) allow for the attachment of crossbars, shelf supports, and other attachments and add-ons along the entire length of the legs. Accessories and add-ons are available.

### Dimensions



## Technical data

### Control box type SCT 4/2 MDT



Control box SCT4 MDT

Control box SCT2 MDT

Number of channels	2 (SCT 2) 4 (SCT 4)
Output power	380 W
Output voltage	34 V
Output amperage	11 A
Input voltage	100 – 240 V / 50 – 60 Hz / 3.6 A
Dimensions	326 x 95 x 41 mm / 12.83 x 3.74 x 1.61 in
Weight	900 g / 1.98 lbs
IP Protection class	IP 20
Memory positions	12
Tilt sensor	Ja
2-way communication	Ja (RS-232 Interface)
Control	RJ-12 connector; controllable via a pushbutton, PLC, or communication protocol

#### Applied standards and guidelines

Approval	Germany and the U.S.
Electical safety	EN 60335-1
EMC	EN 61000
Electical safety	UL 60950
EMC/EMI	FCC Part 15 B (Class A)

#### QUESTIONS?

[mail@maytec.de](mailto:mail@maytec.de)  
[www.maytec.de](http://www.maytec.de)



# MayTec<sup>®</sup>

Find your local sales partner  
from our partner network:



Think Global –

## Buy Local

[www.maytec.de](http://www.maytec.de)