

# LASER

# ENCLOSURES

- Innovative and safe**
- + Certified according to DIN EN**
- + Modular design**



 **MayTec<sup>®</sup>**

[www.maytec.de](http://www.maytec.de)



# Laser Enclosures

## Modular safety solutions

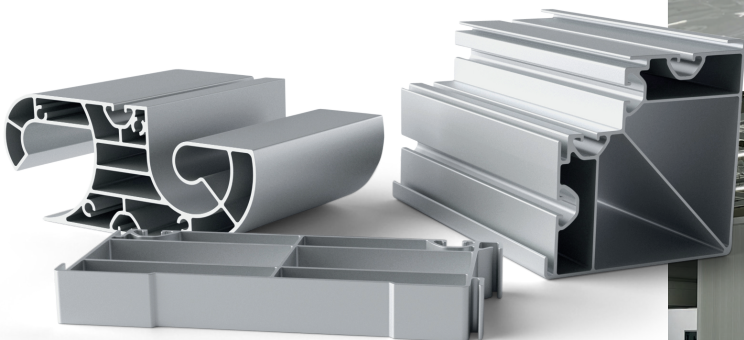
Our free standing laser enclosures offer maximum protection, high flexibility, and an innovative design for modern laser processing systems.

### The advantages:

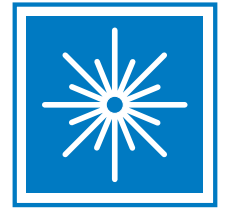
- Laser protection up to 6 kW disc lasers
- Double or four-walled system design depending on the required laser class
- Self-supporting construction up to 12 m
- Laser Enclosures heights up to 7.5 m, length freely configurable
- Standard slot system enables modular extensions and any combinations within a wall
- Corner angles freely adjustable

## Certifications

- DIN EN 12626 – Safety of machinery – Laser processing machines
- DIN EN ISO 11553-1:2005 – Laser processing machines
- DIN EN 60825-1 – Safety of laser equipment Part 1: Classification of equipment, requirements and user guidelines
- DIN EN 60825-4 – Safety of laser equipment Part 4: Laser protective barriers



# System Structure

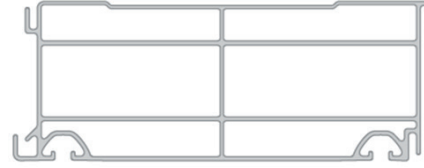
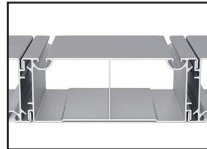


## Select the appropriate profile for the required laser class:

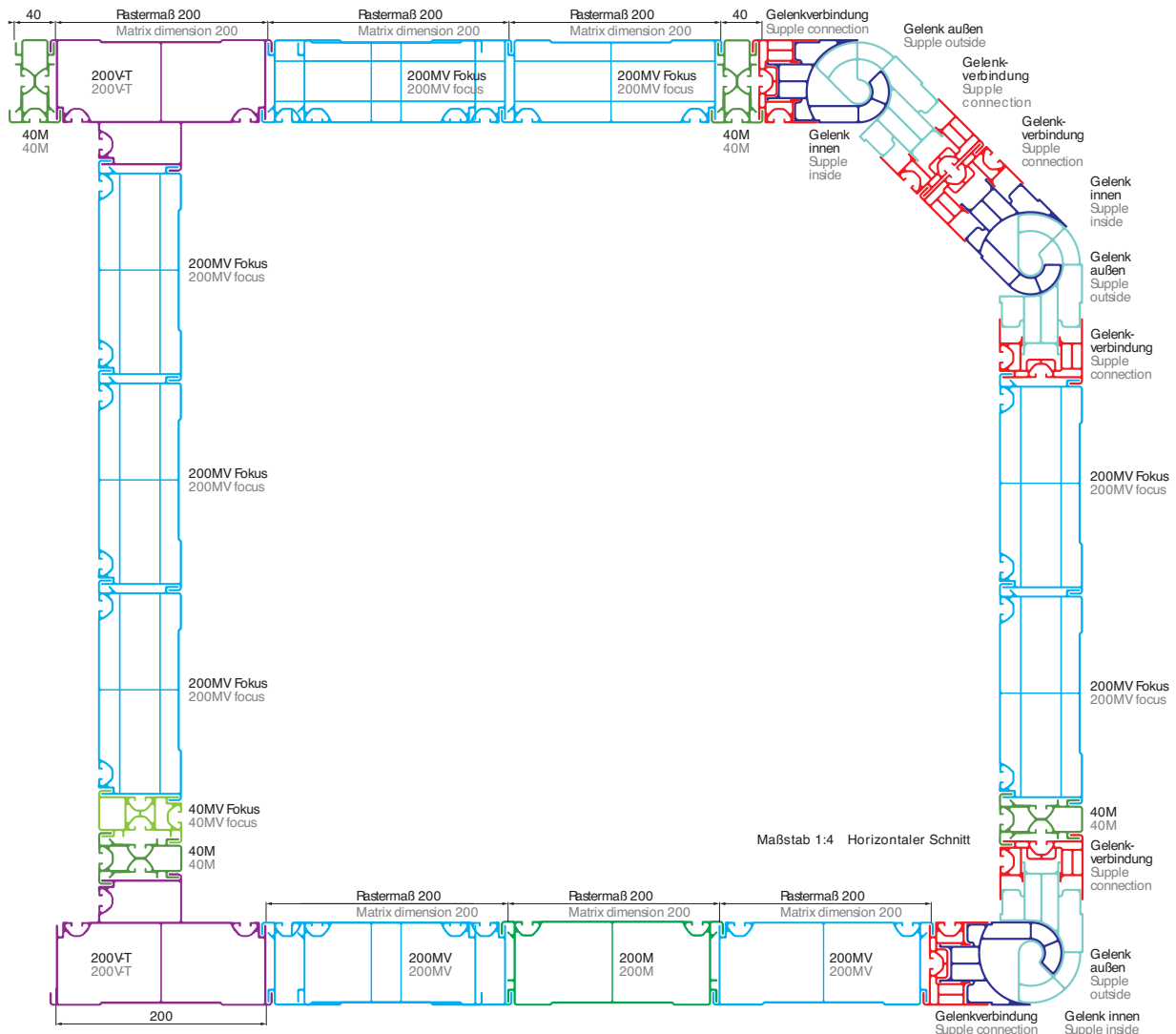
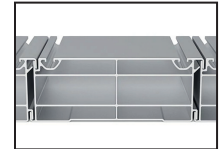
- Perfect, multi-stage labyrinth system
- 8-slot system grid 40 for accommodating installation systems
- Light-tight



**Double-walled system design:**  
Protection against laser radiation up to 4 kW cw Nd-YAG disc lasers



**Four-wall system for applications in the focus range:**  
Protection against laser radiation up to 6 kW cw Nd-YAG disc lasers



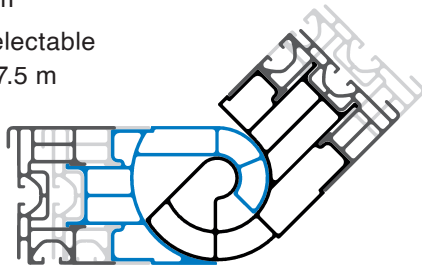
# Cabin and Equipment



## Body

Customization options:

- Cabin length/width possible in increments of 40 cm
- Cabin height freely selectable up to a maximum of 7.5 m
- Corner design fixed at 90° or variable with joint profiles 0°–180°



## Access doors / maintenance doors

All doors are DIN-certified.

Customization options:

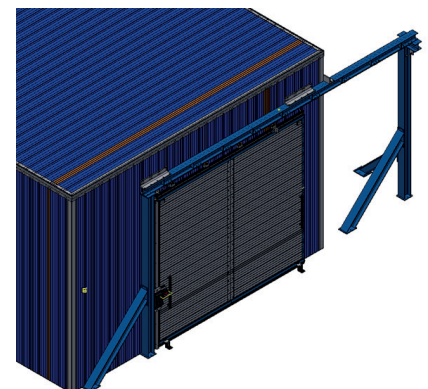
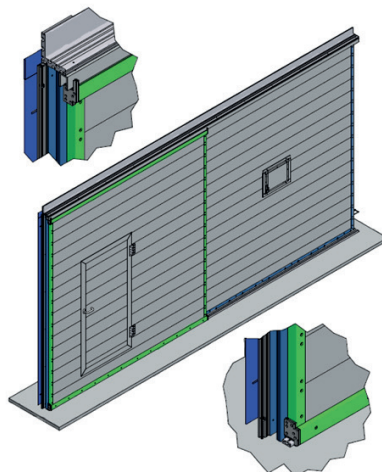
- Single or double maintenance door – can also be combined
- Right/left hinge
- Laser window
- Air flow opening
- Safety switch
- Multi-point locking system



## Sliding process gates

Customization options:

- Can be combined with access door and laser window
- Also available in heavy-duty version with helmet rail



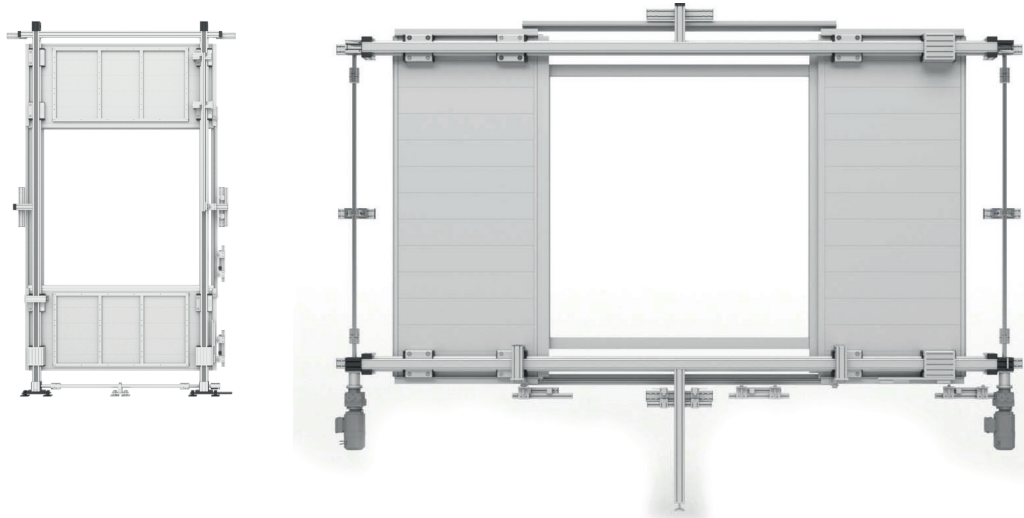
# Cabin and Equipment



## Process gate

Customization options:

- Vertical or horizontal
- Various motor mountings



## Lifting gates

Customization options:

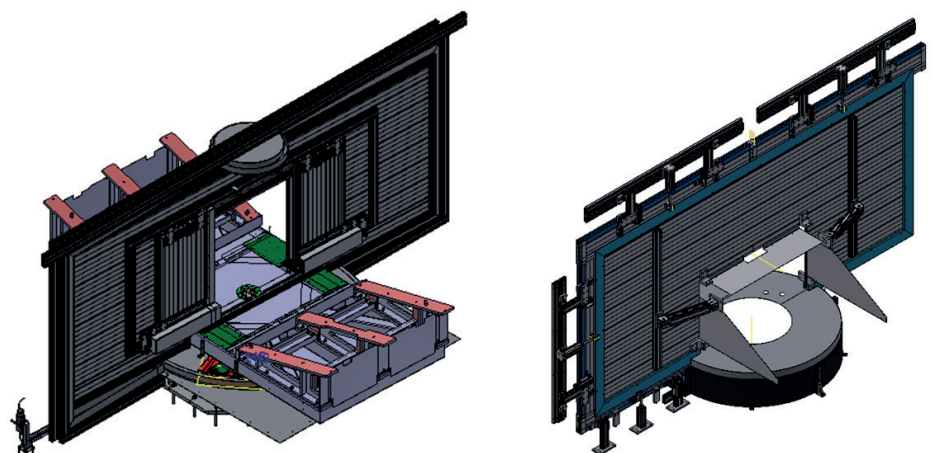
- Pneumatic or with counterweight
- Various motor mountings
- Also for openings



## Seals for turntables

Customization options:

- Various motor mountings
- Also suitable for lift gates
- Suitable for 2- or 3-fold rotary tables
- With or without slide



# Cabin and Equipment



## Extraction systems

- Cable diameter and quantity according to customer requirements



## Cable bushings

- According to customer requirements and local conditions



## Ventilation openings

Customization options:

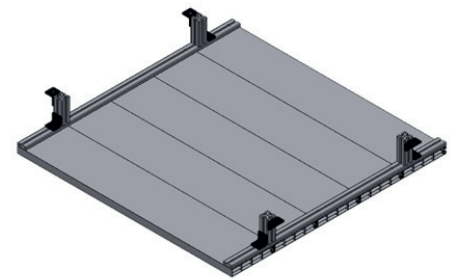
- For walls: horizontal or vertical
- For doors: horizontal only, in various sizes



## Spark trap

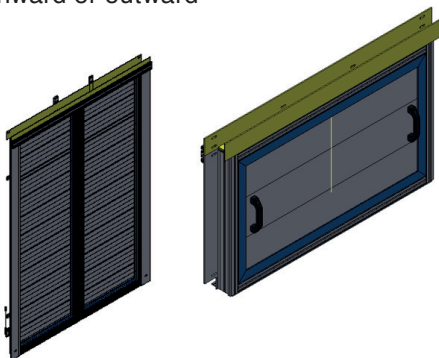
Customization options:

- Fixed size for ceiling/wall openings
- For focus area doors adapted to the respective flow openings



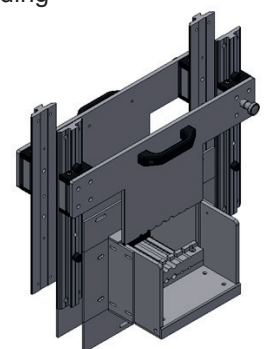
## Maintenance flaps

- Removable inward or outward



## Fiber optic cable feed-through (LLK)

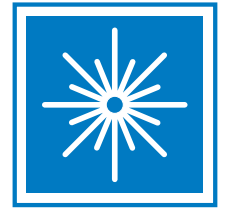
- Cable diameter and quantity according to customer requirements



## Additional equipment options:

- Cabin monitoring: Camera surveillance, monitors, etc. according to customer requirements
- Structural engineering: Steel construction and crane runway from certified suppliers possible according to customer requirements

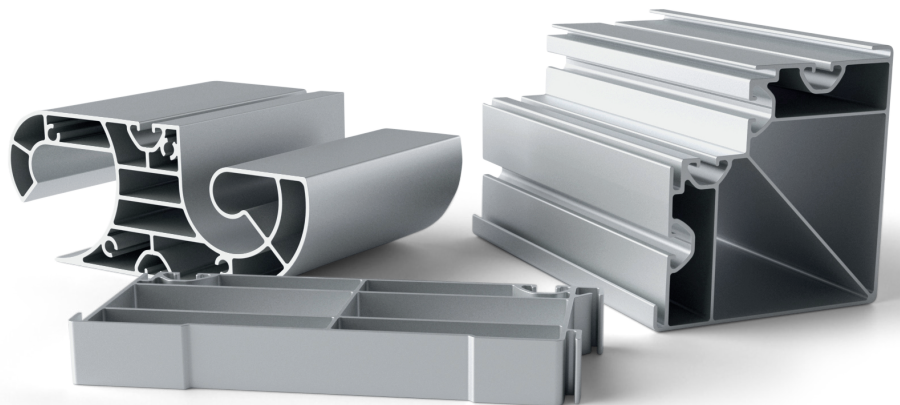
# Technical specifications



Profiles	8-slot system – 40 mm grid; double-walled or four-walled system structure
Laser protection	double-walled: up to 4 kW cw Nd-YAG disc laser four-walled: up to 6 kW cw Nd-YAG disc laser
Corners	fixed 90° or variable with joint profiles 0° – 180°
Dimensions	in 40 mm increments up to max. 12 m (L + W) / up to max. 7.5 m (H)
Certifications	DIN EN 12626 – Safety of machinery – Laser processing machines DIN EN ISO 11553-1:2005 – Laser processing machines DIN EN 60825-1 – Safety of laser equipment Part 1: Classification of equipment, requirements, and user guidelines DIN EN 60825-4 – Safety of laser equipment Part 4: Laser protective barriers
Equipment and customization options	<ul style="list-style-type: none"><li>· Body</li><li>· Access doors / Maintenance doors</li><li>· Sliding doors</li><li>· Process doors</li><li>· Lifting doors</li><li>· Seals for turntables</li><li>· Cable bushings</li><li>· Extraction systems</li><li>· Ventilation openings</li><li>· Spark trap</li><li>· Fiber optic cable feed-through</li><li>· Cabin monitoring (camera surveillance and monitors)</li><li>· Structural engineering (steel construction and crane runway)</li></ul>

## QUESTIONS?

[mail@maytec.de](mailto:mail@maytec.de)  
[www.maytec.de](http://www.maytec.de)



Disclaimer: Subject to change and errors excepted. Please ensure that you are always using the latest version.  
Version: Laser-Enclosures\_2026\_EN1.0



# MayTec<sup>®</sup>

Find your local sales partner  
from our partner network:



Think Global –

## Buy Local

[www.maytec.de](http://www.maytec.de)