

MayLight up your profile



www.maytec.de

MayLight

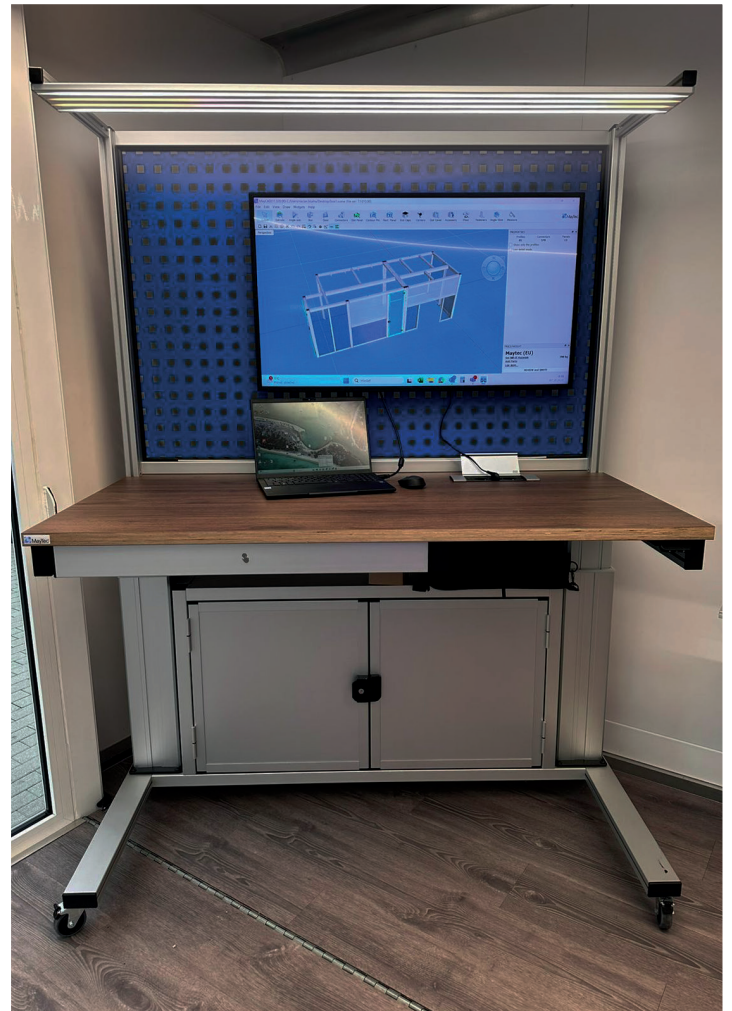
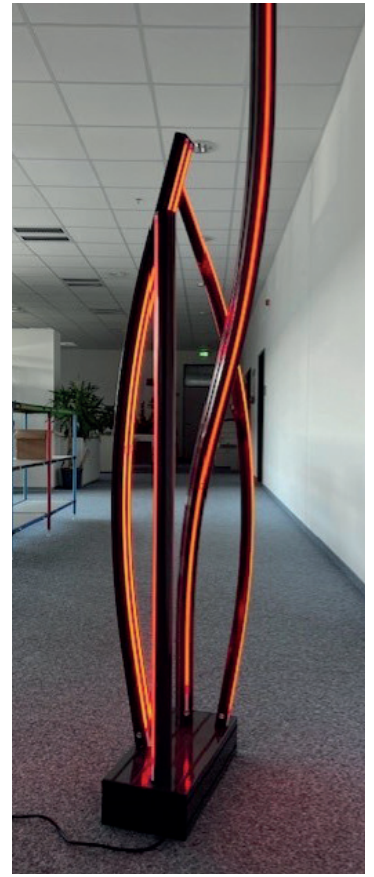


More than just an LED strip in an aluminum profile.

It is your personal lighting designer – for industrial applications, modern room and workplace design, and the smart home sector.

The advantages of MayLight:

- ***The controller is specially designed for the MayTec E-slot of our profiles and can therefore be seamlessly integrated.***
- ***Intelligent control via input signals, EnOcean light switches, or the free app.***
- ***Perfect addition to the MayTec ecosystem offering virtually limitless design possibilities.***



Controller Connections

Connect the controller using the following connectors:

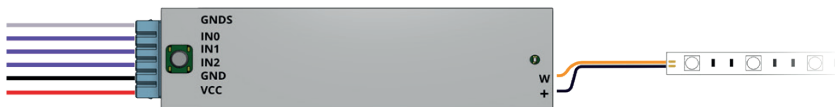
Connector
for 24 V DC
power supply



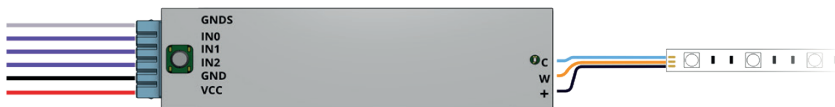
5-pin connector for
the LED strip

Afterwards, connect the controller to the power supply and the LED strip as shown.

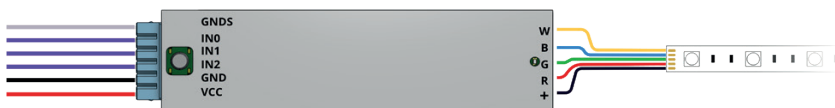
White High Bright



CCT



RGBW



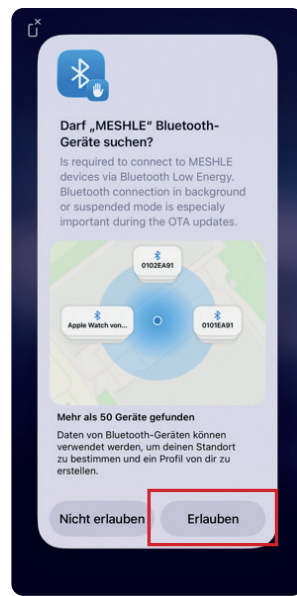
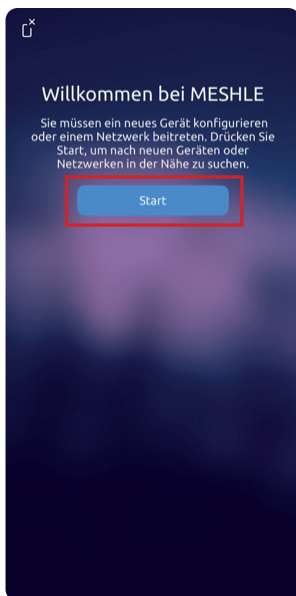
MESHLE-App Configuration



Download and install the app from the appropriate store.



MESHLE App –
See all functions.



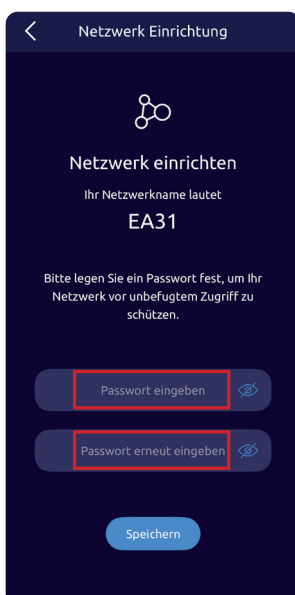
Set the mode according to the strip used:

Press and hold the button on the controller for 15 seconds. You can then switch between modes by simply pressing the button.

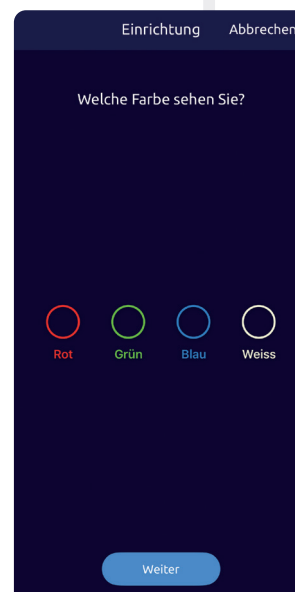
“New device – colored light”
LED strip flashes 4x (RGBW)

“New device – white light”
LED strip flashes 1x (White)

“New device – CCT”
LED strip flashes 2x (CCT)



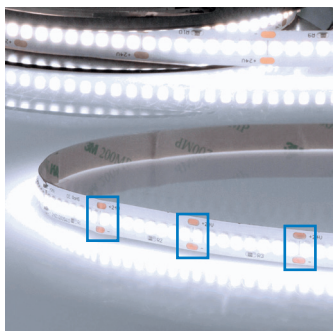
Assign any password, repeat it, and save it.



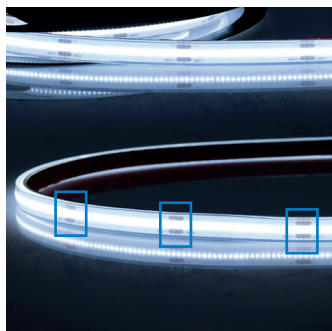
Now select the colors according to the colors that light up on the strip.

Cutting

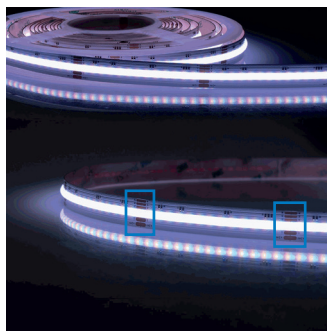
The strips can be cut at the marked lines where the terminals are exposed, using a sharp pair of scissors.



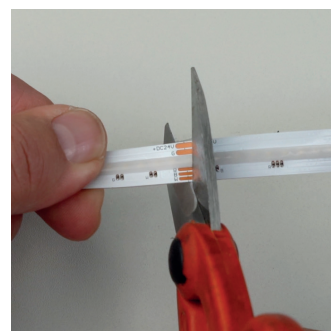
White High Bright



CCT



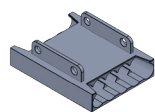
RGBW



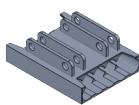
Example with RGBW

Extending with a Contact Connector

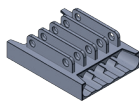
The strips can be extended at the exposed terminals using a contact connector. Place the connector onto the strip according to the strip's contact layout and carefully crimp it using the parallel crimping pliers available from us.



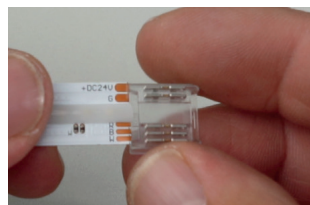
White High Bright



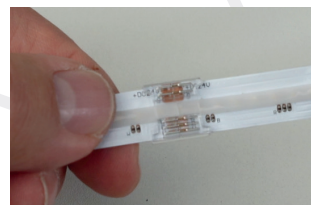
CCT



RGBW



Application: Attach the connector to the RGBW strip

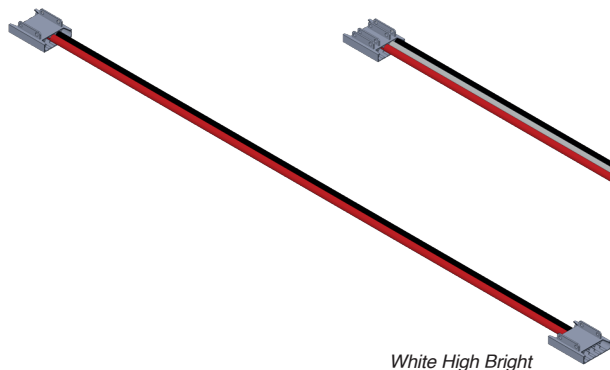


Result with RGBW strip

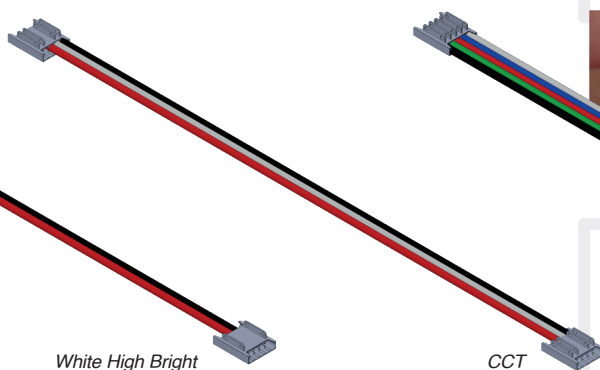
Extending with a Universal Contact Cable Connector

See "Extending with a Contact Connector".

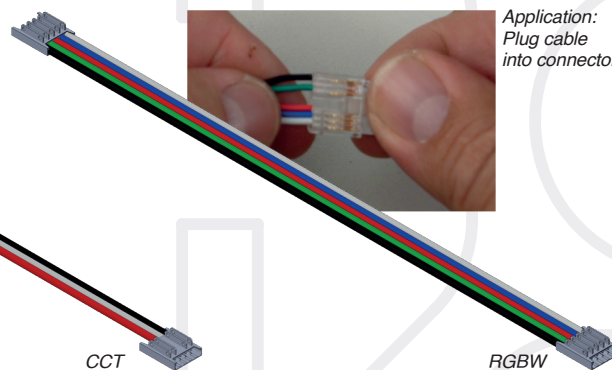
As an additional step, the connector must be connected to the cable according to the drawing.



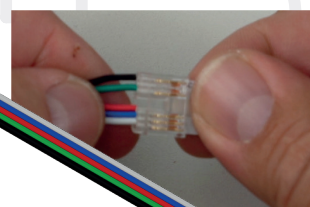
White High Bright



CCT



RGBW



Application:
Plug cable
into connector

Technical specifications



Controller

Integration	Seamlessly integrated into the profile (E-slot)
Input signal voltage	5 – 65 volts DC
Permissible voltage tolerance	+/- 5 %
Current consumption (no load)	max. 15 mA
Housing material	PLA
Protection class	IP20 ≈ NEMA 1
Humidity (relative humidity in the environment)	up to 85% non-condensing
Operating temperature	-20 °C to +45 °C / -4°F to 113 °F
Weight	0,011 kg

QUESTIONS?

mail@maytec.de

MayTec Aluminium Systemtechnik GmbH
Gewerbering 16 · 82140 Olching (GER)
www.maytec.de

LED stripes

Integration	all	Compatible with all MayTec aluminum profiles with E-slot and F-slot
Color / Color temperature	High Bright	Single white light, dimmable / 6000K
	CCT	White light / adjustable color temperature / 2700K – 6500K
	RGBW	Full color selection plus white light (one color from the RGB spectrum) / 3000K
Separation point	High Bright	33,33 mm with 8 SMDs each
	CCT	25 mm with 16 SMDs each
	RGBW	62,5 mm with 56 SMDs each
Dimensions (W / H / L)	High Bright	10 mm / 1 mm / 3 m or 20 m role
	CCT	10 mm / 1 mm / 5 m or 20 m role
	RGBW	12 mm / 2 mm / 5 m or 20 m role
Service life	High Bright	52000 h
	CCT	38000 h
	RGBW	38000 h
Power consumption	High Bright	32 W/m
	CCT	14 W/m
	RGBW	20 W/m
Rated voltage	all	24 V DC
Temperature	all	0 °C to +40 °C / 32 °F to 120 °F
Luminous flux	High Bright	4700 lm/m – suitable for workplaces (with unfiltered radiation)
	CCT	1420 lm/m
	RGBW	1250 lm/m
Protection class	all	IP20
Energy efficiency class	High Bright	C
	CCT	D
	RGBW	G

Other

Control	1. MESHLE-App (free for iOS and Android) 2. EnOcean light switch 3. Three configurable inputs
Power supply voltage	12 – 24 volts DC
Covering	Cover profiles for E-slot and F-slot, transparent
Applications	Industrial and private use

Disclaimer: Subject to change and errors excepted. Please ensure that you are always using the latest version. Version: MayLight_2026_EN1.1

Hazard warnings: Electrical devices may only be installed and assembled by a qualified electrician. Failure to follow the installation instructions may result in fire or other hazards.



MayTec Aluminium Systemtechnik GmbH · info@maytec.de · www.maytec.de
Headquarter South: Gewerbering 16, 82140 Olching, GER · Location North: Gewerbepark Meißen 17, 32423 Minden, GER



MayTec[®]

MayTec Aluminium Systemtechnik GmbH

mail@maytec.de

www.maytec.de

Headquarter:

Gewerbering 16

82140 Olching

Germany

The smart way to connect

