

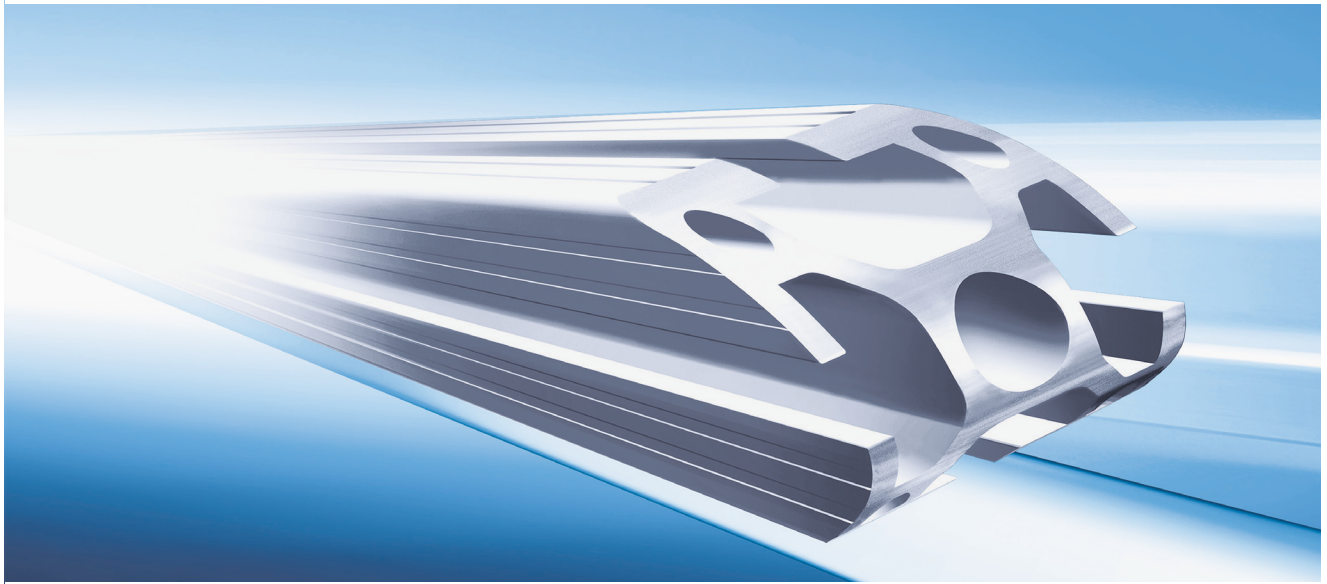


» The Telescopic System

GB
1/2023

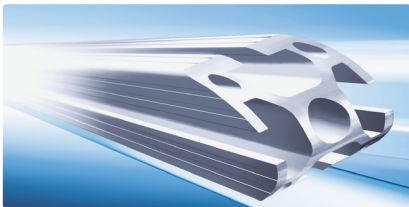
 MayTec®

The key ...



» The Profile System

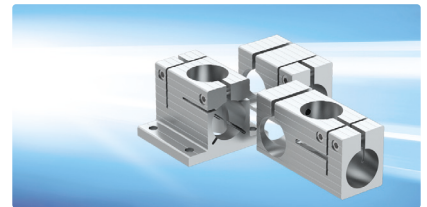
powered by
MayCAD
Design Software



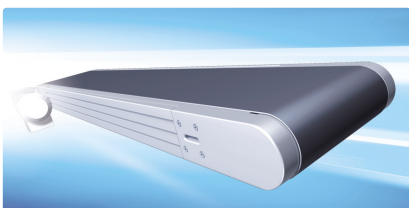
The Profile System



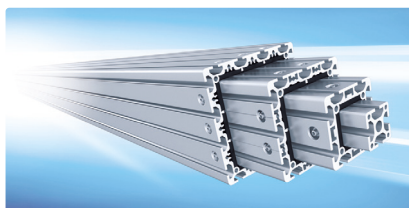
The Clean-Room System



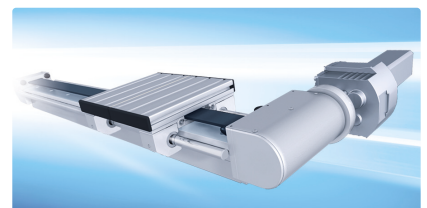
The Tube Clamping System



The Conveyor System



The Telescopic System



The Linear System



The Personnel Transfer System



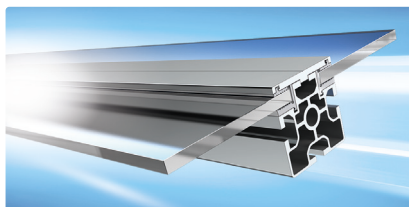
The Skid Transfer System



The Dust Protection System



Safety Barriers

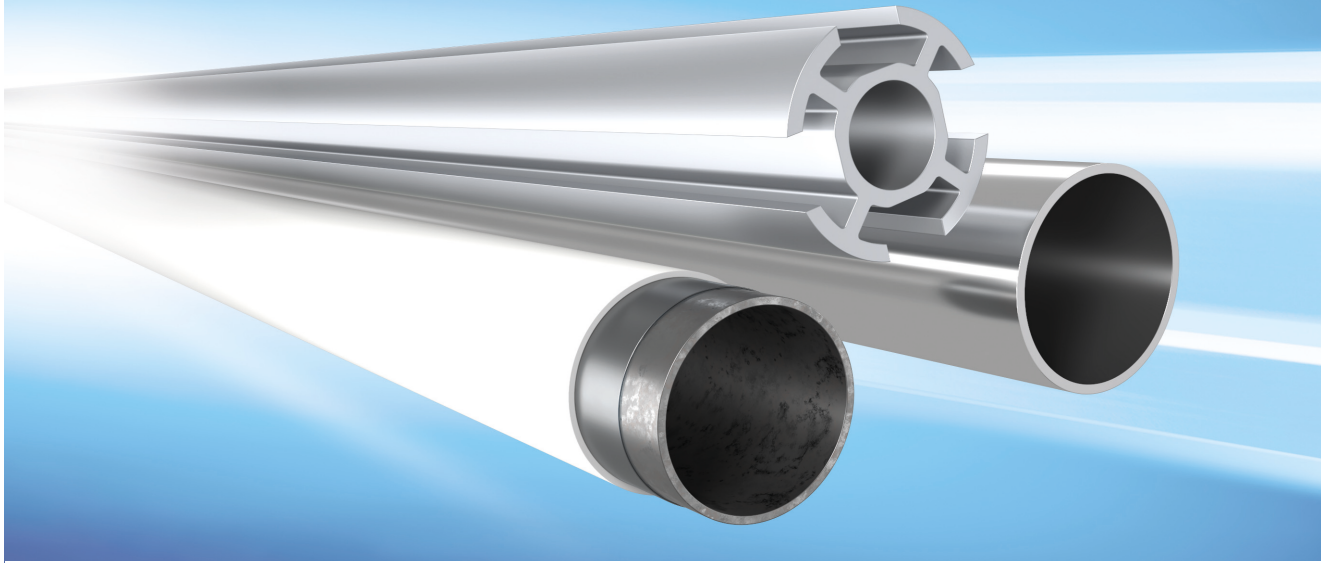


The Modular Wall System



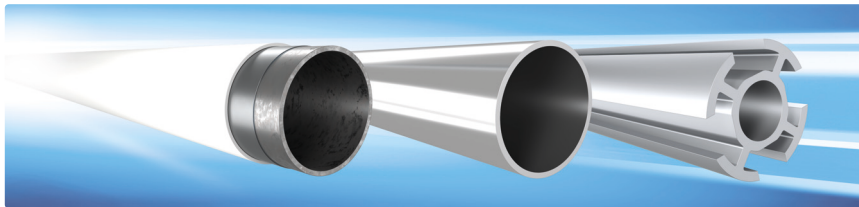
Noise Resist

... to success !



» The Pipe & Joint System

powered by
MayTube
 Design Software



The Pipe & Joint System



The Trailer System

The ideal modular system

MayTec offers a comprehensive, harmonised modular system. All modules can be combined in any way conceivable.

The accessories provide functional and aesthetic solutions for a wide range of applications.

Service

The MayTec service is as versatile as the MayTec modular system.

You may choose:

- delivery of standard elements ex-factory
- delivery of profiles, pipes and accessories cut to size according to parts list for customer's assembly
- delivery of pre-fitted modular components
- delivery of completely assembled units
- assembly at your premises


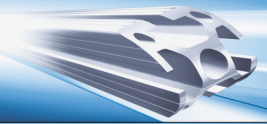
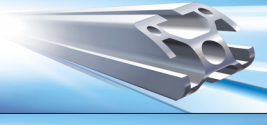
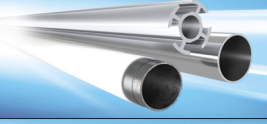

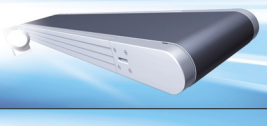
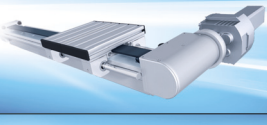
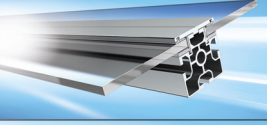

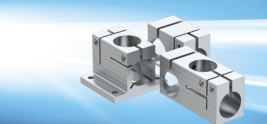
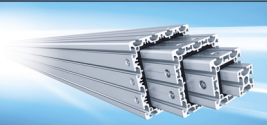

Implementation

The MayTec modular system is easy to process and quick to assemble. Its flexible and modular construction means it can be easily modified and is reusable at any time.

An experienced team will support you in implementing the MayTec system, tailored to your individual applications, taking into consideration your dimensions, loading capacity and stability.

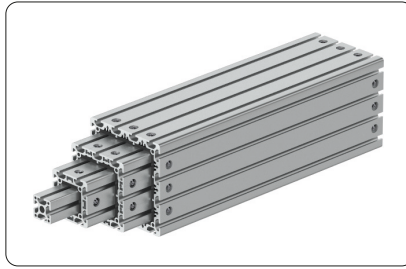
Applications

- | | | |
|---|---|---|
| <ul style="list-style-type: none"> • assembly and inspection stations • display systems • exhibition cabinets and stands • FiFo shelves • flow shelves | <ul style="list-style-type: none"> • machine bases • machine enclosures • machine guarding • partitions and protective walls • plant equipment | <ul style="list-style-type: none"> • protective and work cabinets • sequence trolleys • special shelves • transfer and supply trolleys • work stations |
|---|---|---|

	Title	DE	GB	FR	ES	IT	CZ
	Product Summary	•	•	•	•	•	•
	The Profile System	•	•	•	•	•	
	The Inch System		•				
	The Pipe & Joint System	•	•		•	•	
	The Trailer System	•	•			•	
	The Conveyor System	•	•	•		•	
	The Linear System	•	•				
	The Modular Wall System	•	•			•	
	Safety Barriers	•	•				
	The Tube Clamping System	•					
	The Telescopic System	•	•			•	
	MayCAD / MayTube	•	•	•	•	•	

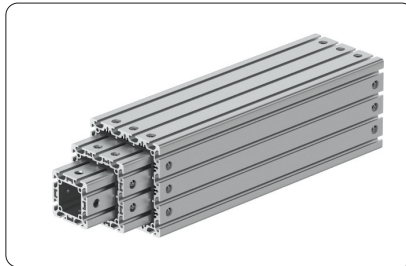
 Download at <http://maytec.com.de>

Variations


Telescopic profile 160×160, 16E, SP

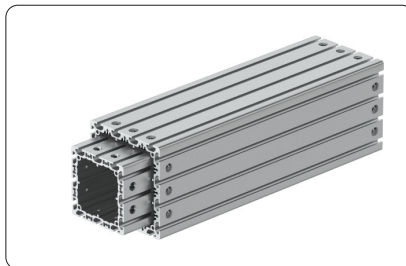
3-row sliding T-nut with

- telescopic profile 120×120, 12E, SP
- telescopic profile 80×80, 8E, SP
- profile 40×40, 4E, SP


Telescopic profile 160×160, 16E, SP

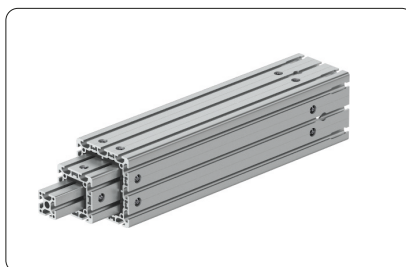
3-row sliding T-nut with

- telescopic profile 120×120, 12E, SP
- telescopic profile 80×80, 8E, SP


Telescopic profile 160×160, 16E, SP

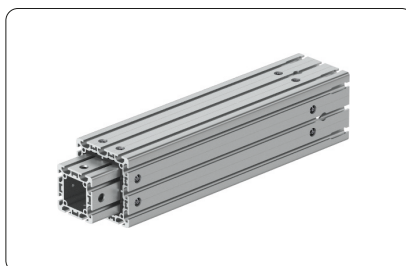
3-row sliding T-nut with

- telescopic profile 120×120, 12E, SP


Telescopic profile 120×120, 12E, SP

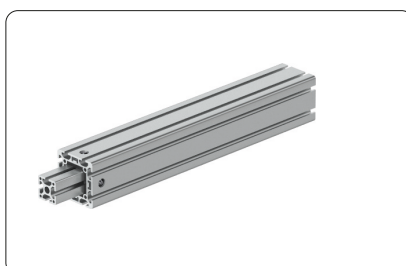
2-row sliding T-nut with

- telescopic profile 80×80, 8E, SP
- profile 40×40, 4E, SP


Telescopic profile 120×120, 12E, SP

2-row sliding T-nut with

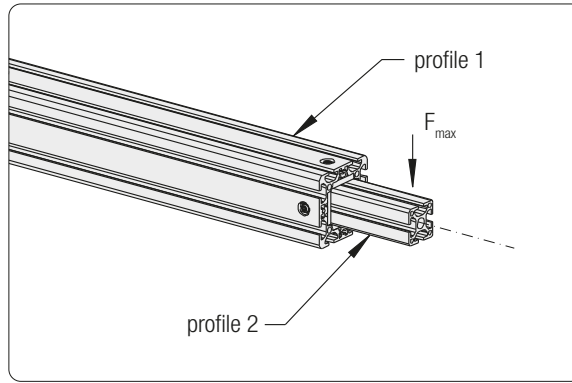
- telescopic profile 80×80, 8E, SP


Telescopic profile 80×80, 8E, SP

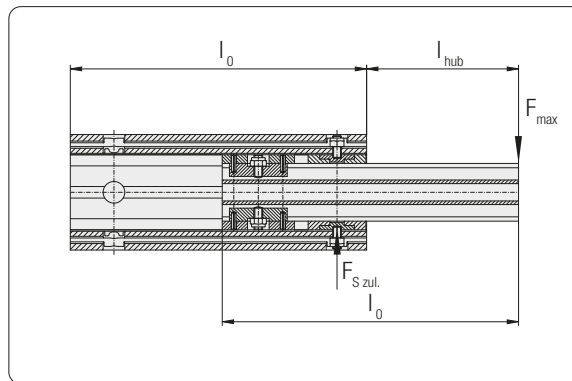
1-row sliding T-nut with

- profile 40×40, 4E, SP

Maximum admissible force F_{max}



Maximum admissible force F_{max} perpendicular to center line

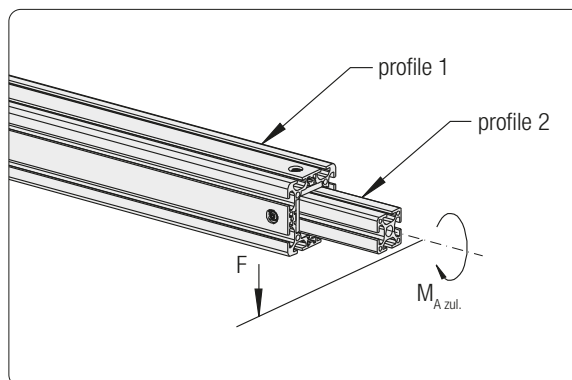


$$F_{max} = \frac{F_{S\ zul.} \cdot (l_0 - l_{hub} - 45.5)}{l_0 - 25}$$

Profile 1	Profile 2	$F_{S\ max}$		
		Sliding blocks		
		1-rowed	2-rowed	3-rowed
80×80	40×40	5,000 N	-	-
120×120	80×80	-	9,000 N	-
160×160	120×120	-	5,000 N	7,500 N

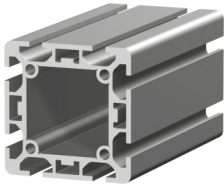
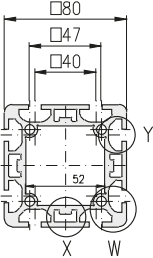
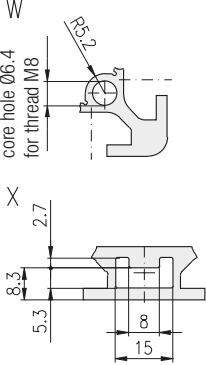
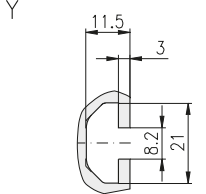
Maximum admissible moment

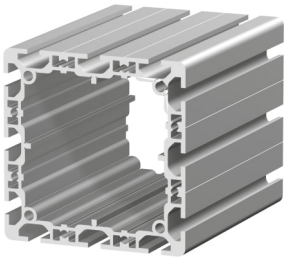
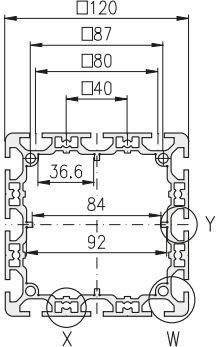
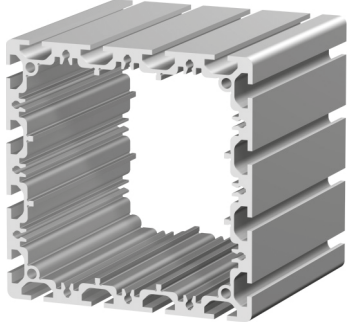
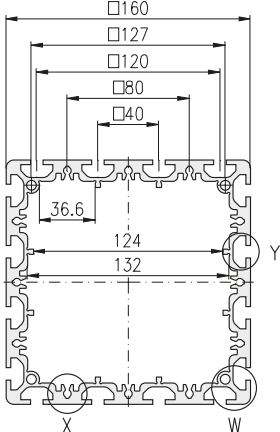
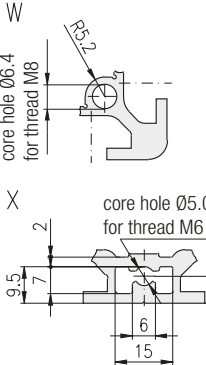
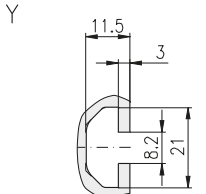
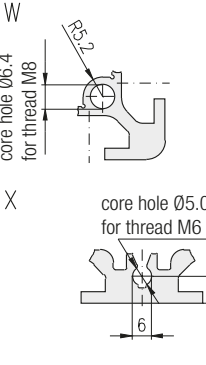
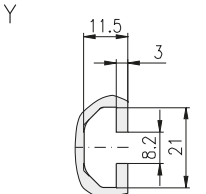
$M_{A\ max}$



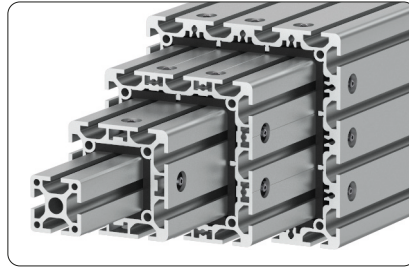
Maximum admissible Moment $M_{A\ max}$ generated by a force F radial to center line.

Profile 1	Profile 2	$M_{A\ max}$
80×80	40×40	400 Nm
120×120	80×80	900 Nm
160×160	120×120	800 Nm

heavy	<p>Technical data material: Al Mg Si 0,5 F22 tensile strength: 220 N/mm² surface: natural anodised</p>  	
 		
Description	Telescopic profile 80×80, 8E, SBP	
bar, 6 m	9.11.080080.83SBP.60	
moment of inertia cm ⁴	I _x = 150.0 I _y = 150.0	
moment of resistance cm ³	W _x = 37.5 W _y = 37.5	
weight kg/m	G = 5.2	

heavy	<p>Technical data material: Al Mg Si 0,5 F22 tensile strength: 220 N/mm² surface: natural anodised</p>  	heavy	 
 		 	
Description	Telescopic profile 120×120, 12E, SP	Description	Telescopic profile 160×160, 16E, SP
bar, 6 m	9.11.120120.123SP.60	bar, 6 m	9.11.160160.163SP.60
moment of inertia cm ⁴	I _x = 554.0 I _y = 554.0	moment of inertia cm ⁴	I _x = 1,424.0 I _y = 1,424.0
moment of resistance cm ³	W _x = 93.0 W _y = 93.0	moment of resistance cm ³	W _x = 178.0 W _y = 178.0
weight kg/m	G = 7.8	weight kg/m	G = 10.7

Sliding blocks for telescopic profile



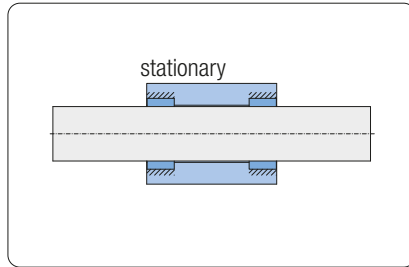
Application

Guide slot for telescopic profiles with sliding blocks

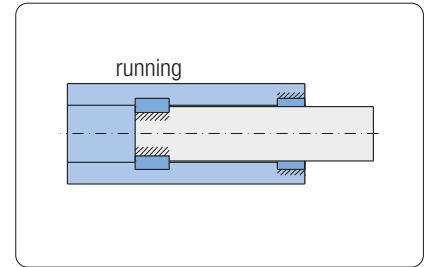
Technical data

material: PA6G oil
colour: black

Guide Variations

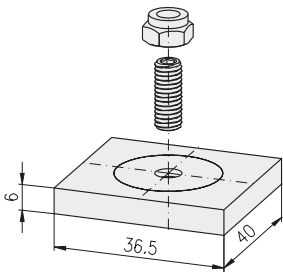
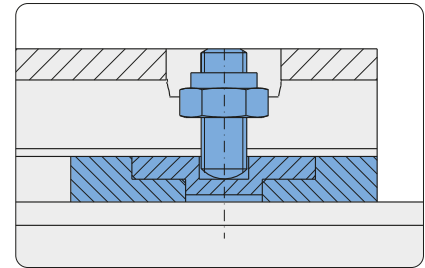
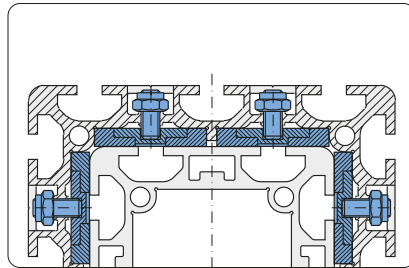


Sliding block, stationary



Sliding block, running

Sliding block, stationary for telescopic profile

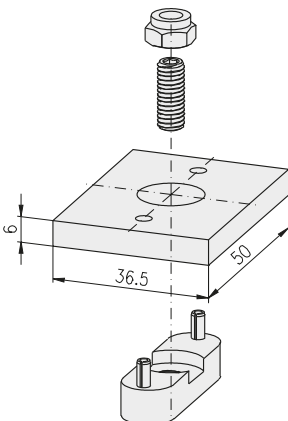
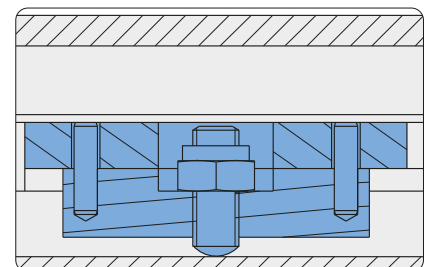
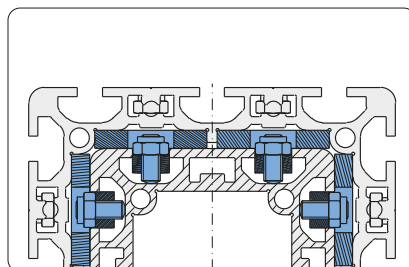


Description

Description	Weight	Product-No.
Sliding block, stationary, 40×36.5	7.6 g	9.67.1014036
Bush for sliding block, stationary	10.8 g	9.67.1024
Setscrew, special, M6×16, with spherical head, stainless	2.6 g	0.63.MT091X.06016
Setscrew, special, M6×17, with spherical head, stainless ¹⁾	2.5 g	0.63.MT091X.06017
Hexagonal nut, DIN 985 - M6	2.1 g	0.61.D00985.06

¹⁾ for Telescopic profile 160×160, 16E, SP

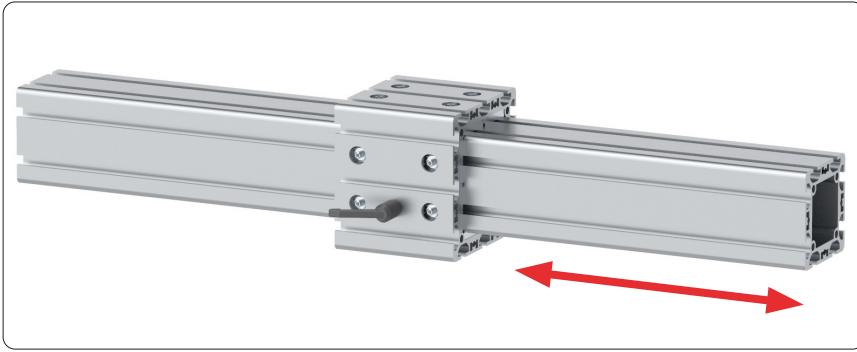
Sliding block, running for telescopic profile



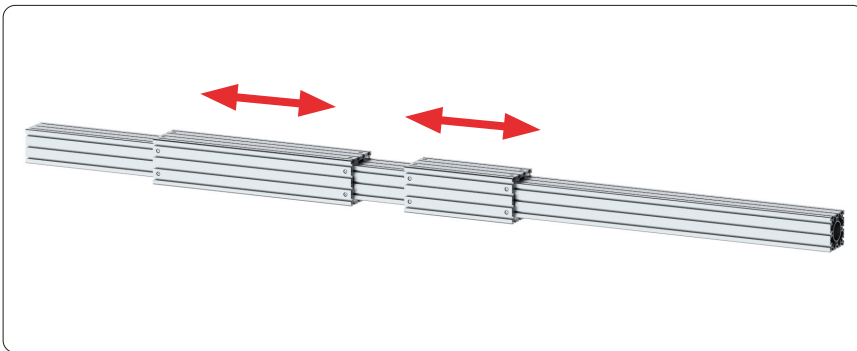
Description

Description	Weight	Product-No.
Sliding block, running, 50×36.5	10.5 g	9.67.1015036
Feather key, A 14×9×40, thread M6, with 2 dowel pins	31.0 g	9.67.1024.1409040
Setscrew, special, M6×16, with spherical head, stainless	2.6 g	0.63.MT091X.06016
Setscrew, special, M6×17, with spherical head, stainless ¹⁾	2.5 g	0.63.MT091X.06017
Hexagonal nut, DIN 985 - M6	2.1 g	0.61.D00985.06

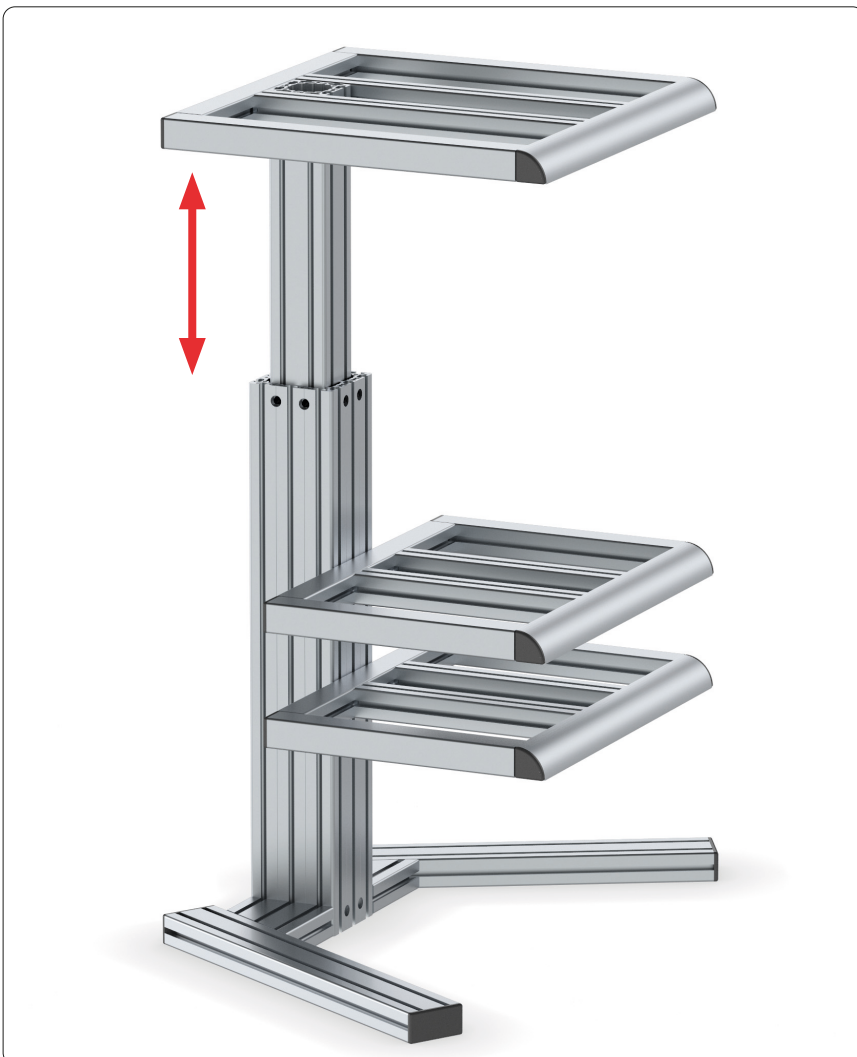
¹⁾ for Telescopic profile 160×160, 16E, SP



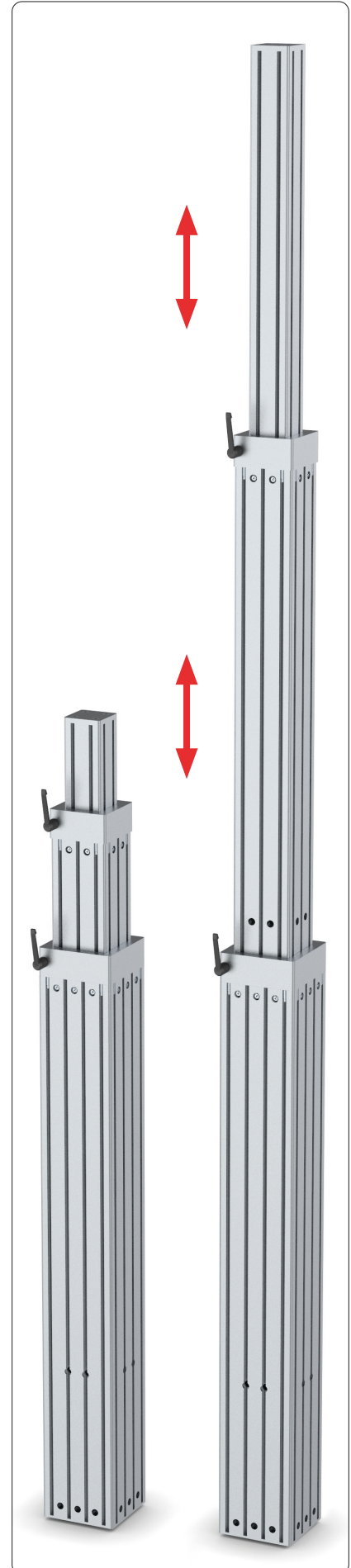
fixation with clamping lever



double carriage system



high adjustable standing desk



3 stepped system

Imprint

Subject to technical modification.

All rights reserved.

Copying - also in parts - only allowed by
written consent.

© MayTec Aluminium Systemtechnik GmbH,
Germany, D - 82140 Olching, 2023



MayTec GmbH plant in Olching



Accessory storage



Stock of aluminium profiles



Panel storage



Profile machining

The key ...

to success

universal

efficient

functional

Australia

MayTec Australia P/L

Unit 8, 175 James Ruse Drive
Rosehill, NSW 2142

country code: +61
phone (0)2/9898 9929
fax (0)2/9638 4086
info@maytec.com.au
www.maytec.com.au

Germany

MayTec Aluminium
Systemtechnik GmbH
Gewerbering 16
D-82140 Olching

country code: +49
phone (0)8142/6540-0
fax (0)8142/6540-119
mail@maytec.de
www.maytec.de

USA

MayTec Inc.

901 Wesemann Drive
West Dundee, IL 60118

country code: +1
phone 847-429-0321
fax 847-429-0460
mail@maytecinc.com
www.maytecinc.com

MayTec distributor