

The Conveyor System

Introduction	5.01
Order example	5.02
Numerical key	5.03
Request / Order	5.04

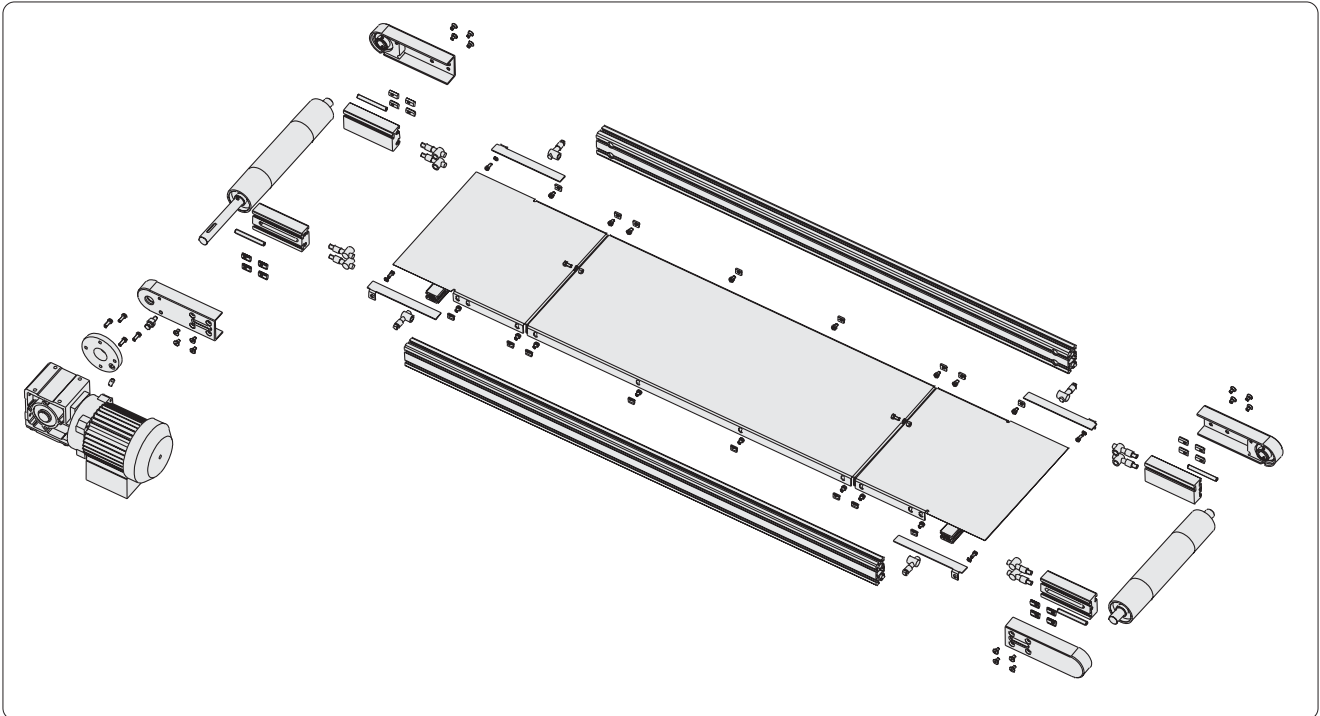
Conveyors	Summary	5.05
	Standard belt - Linear	5.06
	Conveyor, belt running outside	5.111
	Conveyor, belt running inside	5.111
	Position of motor	A

The modular conveyor system from MayTec is available in many configurations and is ideal for self assembly situations. Along with the modular design, the conveyor system is supported by a huge range of standard components making it simple to configure and easy to assemble. Components from the MayTec profile range have been used primarily, thereby allowing the conveyor to be easily extended and adapted.

The standardizing of components provides the opportunity to utilize existing MayTec products in the construction of the line thereby reducing costs and increasing efficiency. This results in faster delivery times along with simple installation and commissioning. The modular design also allows conveyor segments to be easily integrated into larger, more complex systems.

Designed for any application, the MayTec conveyor can be delivered in component form for assembly on site, or fully assembled and ready for use.

For self assembly, please request the technical documentation including parts lists, exploded diagrams and assembly instructions.



Single parts for self assembly



Conveyor complete

Description:
Conveyor with standard belt - linear complete

- direct drive

- belt running inside

- position of profile vertical

- profile 30x100, 8F,P
Article-No.:
5.111.1120.10030
Type 1120.10030
.84P.□□□□×□□□□□

width × length

Numerical key
5.03
Conveyor
5.□□□.□□□□.□□□□□

5 □□□.□□□□.□□□□□

5.□□□.□□□□.□□□□□

5.□□□.□□□□.□□□□□

5.□□□ □□□□.□□□□□

5.□□□.□□□□.□□□□□

5.□□□.□□□□.□□□□□

5.□□□.□□□□.□□□□□

5.□□□.□□□□.□□□□□

5.□□□.□□□□.□□□□□

5.□□□.□□□□.□□□□□

.□□□□.□□□□×□□□□□

□□□□ □□□□×□□□□□

.□□□□.□□□□×□□□□□

.□□□□.□□□□×□□□□□

Key (line 1)

Design ¹⁾

Type ²⁾

Construction ³⁾

Position of belt ⁴⁾

Kind of drive ⁵⁾

Position of profile ⁶⁾

Sliding sheet metal ⁷⁾

Conveyor - height

Profile width

Key (line 2)

Profile-Type

Belt width

Axle distance

- ¹⁾ 1 = Standard
2 = Clean room
- ²⁾ 1 = Belt conveyor
2 = Link chain conveyor
3 = Chain conveyor
4 = Twin-belt conveyor
- ³⁾ 1 = Linear conveyor
2 = Angled conveyor
3 = Linear conveyor, curved
- ⁴⁾ 1 = running outside
2 = running inside
- ⁵⁾ 1 = Direct drive
2 = Drive under belt
3 = Center drive
4 = Axial cylinder motor
- ⁶⁾ 1 = horizontal
2 = vertical
- ⁷⁾ 0 = unfolded
1 = folded

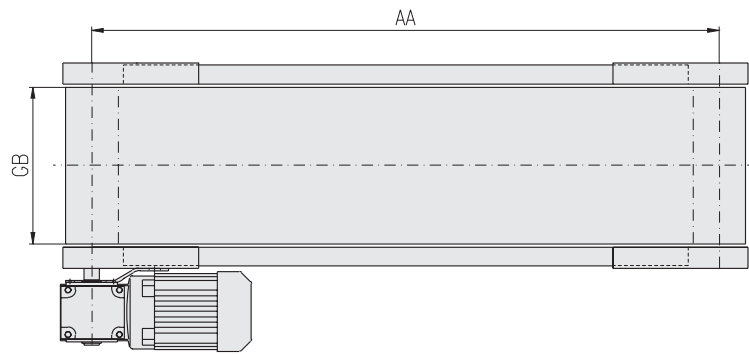
Description:

Article-No.:

5. . .

. .

Measures:



Operating conditions:

Material to be conveyed: _____

Kind of material: wet, dry, oily, dusty, hot, ... or: _____

Weight of material: _____ kg/m

Handling speed: _____ m/min (tolerance: ± 5%)

Dimensioning of conveyor:

Base frame: height _____ mm width _____ mm

Axle distance: min. _____ mm max. _____ mm

Total length: min. _____ mm max. _____ mm

Belt width: _____ mm net width _____ mm

Type of belt: type _____

Drive unit:

Motor: type _____ rot. speed (n1) _____

Position of motor: type _____

Orientation of motor: _____ deg. (standard: 0 deg.)

Position of conduit box: _____ deg. (standard: 90 deg.)

Frequency changer: type _____ power capacity _____ KW




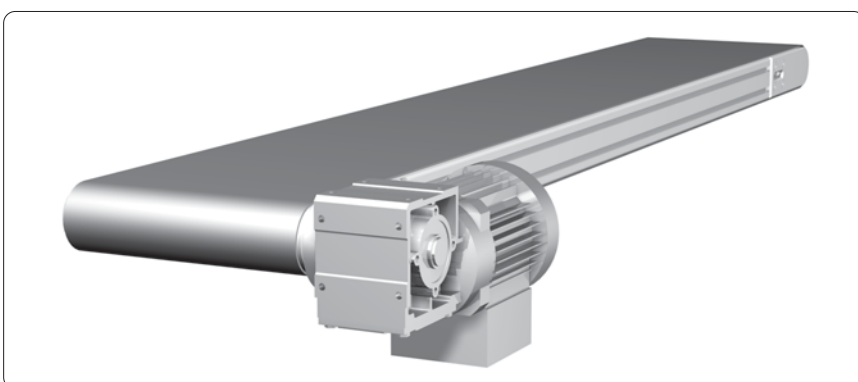
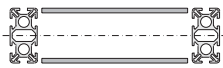
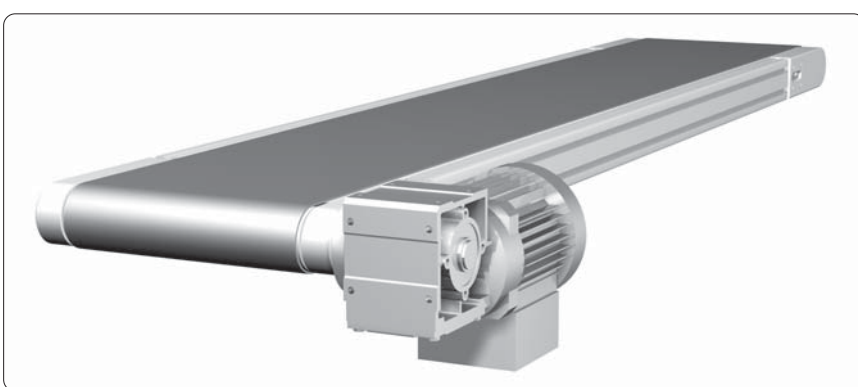
Motor protection: type _____

Accessories:

Chassis: type _____ rise _____ mm

Guide rails: type _____ height _____ mm

Knife edge: type _____ diameter _____ mm

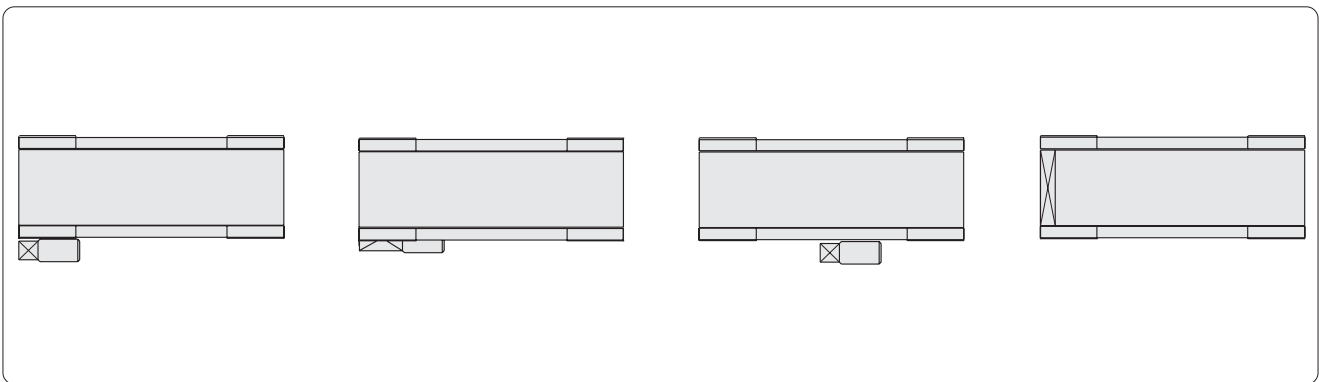
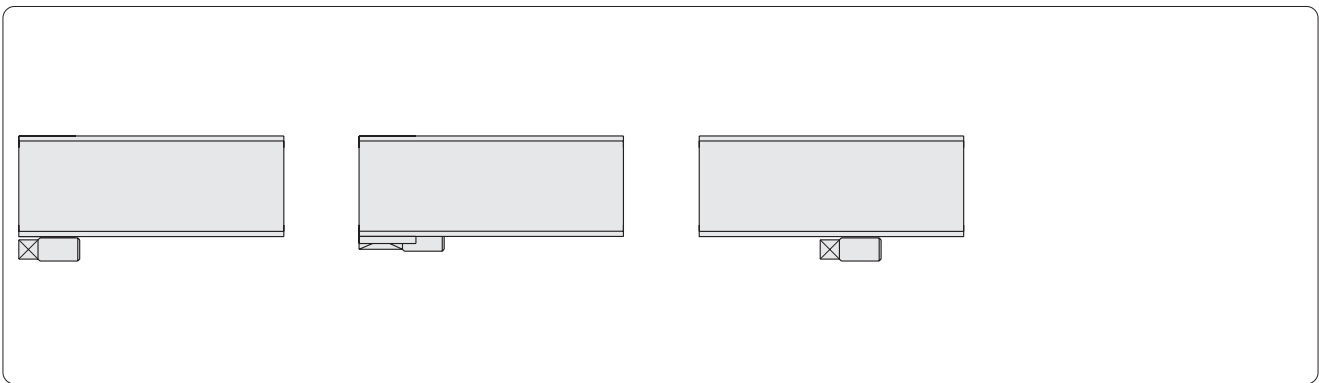
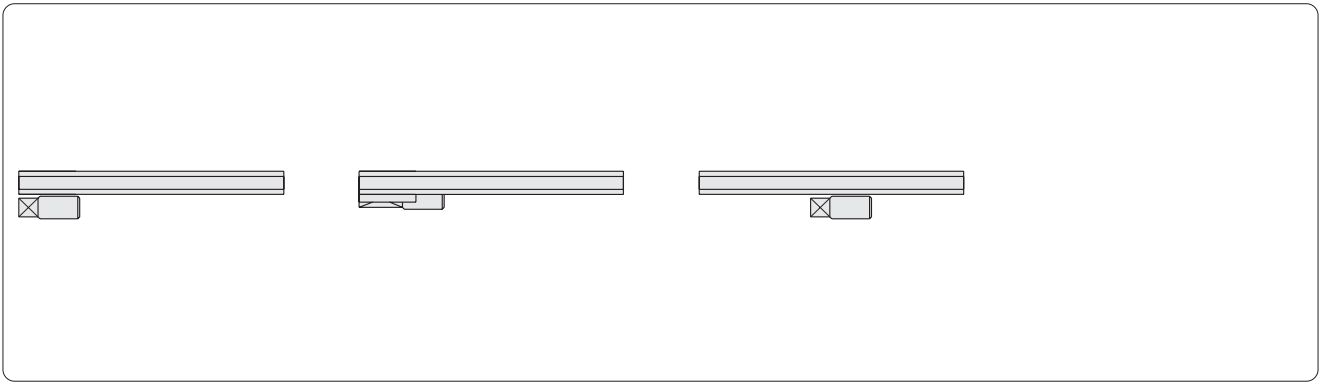
Belt	Position of profile	Example
running outside	<p data-bbox="391 280 518 324">horizontal</p> 	
	<p data-bbox="406 728 502 772">vertical</p> 	
running inside	<p data-bbox="406 1254 502 1299">vertical</p> 	

Direct drive

Drive under belt

Center drive

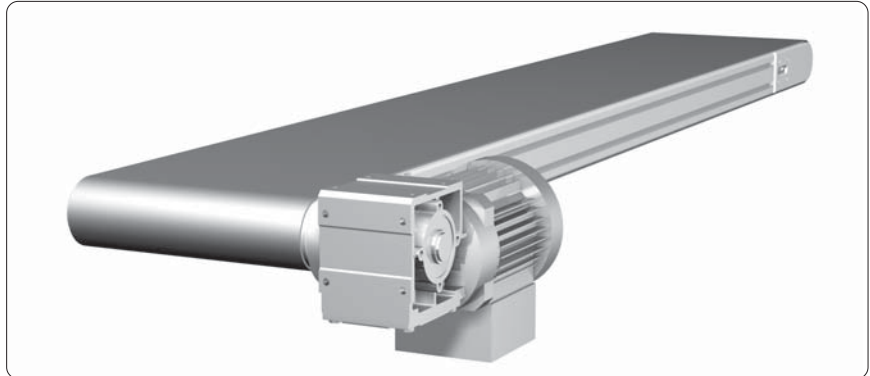
Axial cylinder motor



Belt running outside
Position of profile vertical



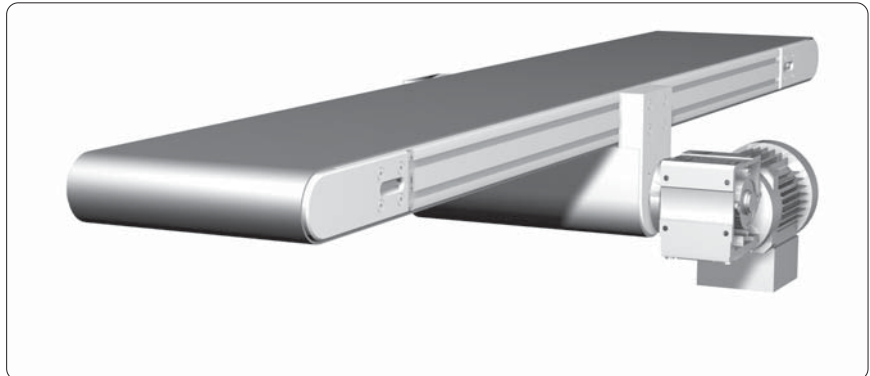
Direct drive
Type 1120-60030



Drive under belt
Type 1220-60030



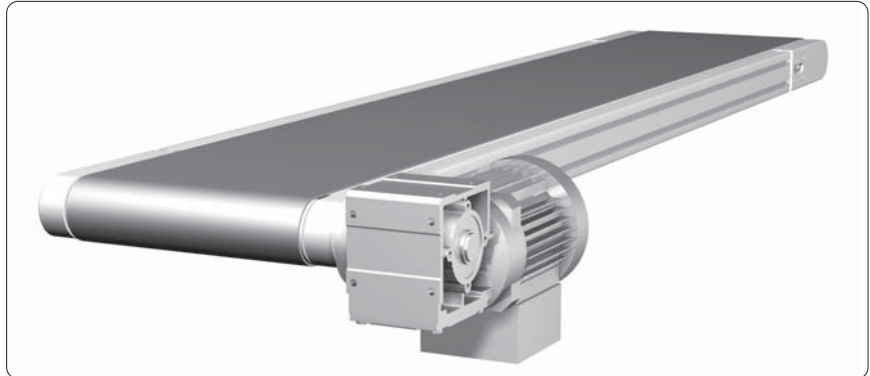
Center drive
Type 1320-60030



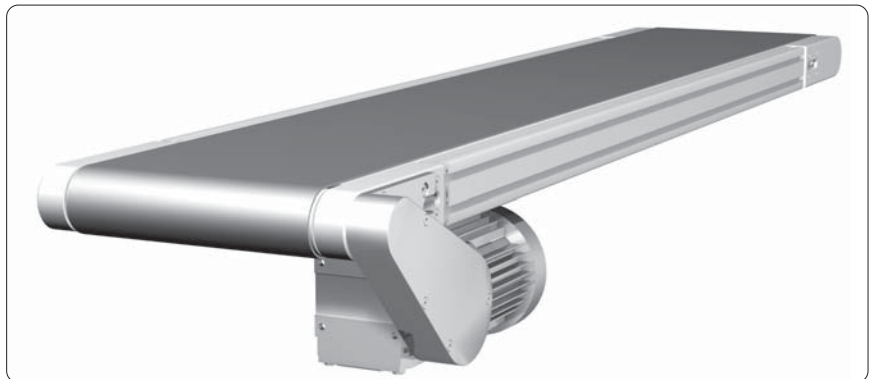
Belt running inside
Position of profile vertical



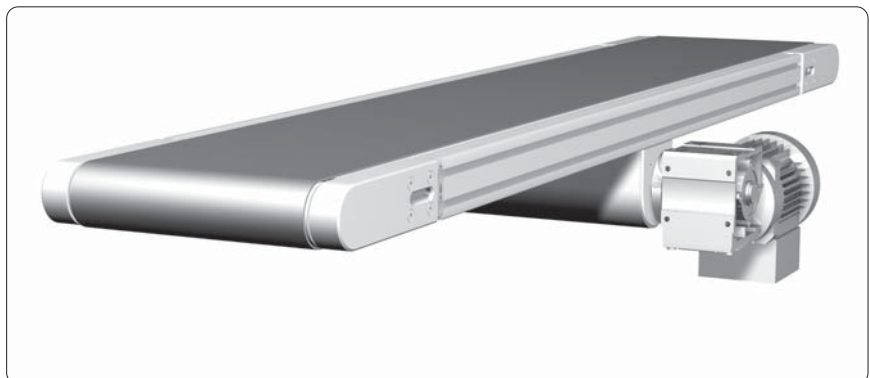
Direct drive
Type 2121-60030



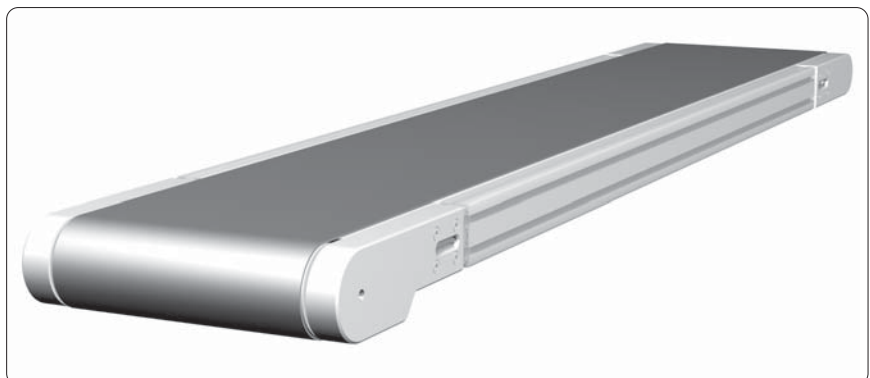
Drive under belt
Type 2221-60030



Center drive
Type 2321-60030



Axial cylinder motor
Type 2421-60030

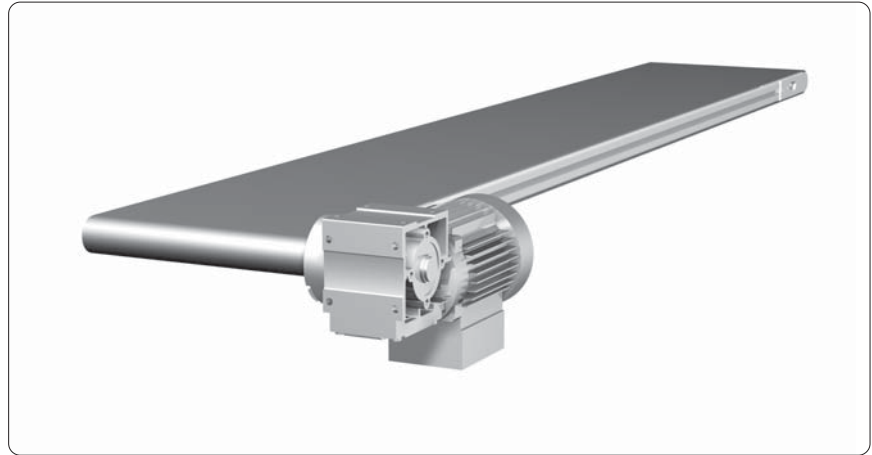


Conveyor

- belt running outside
- direct drive

Profile 30x30

Type: 1120-30030



Technical data	
Weight of conveyed material:	max. 15 kg/m
Axle distance:	300 - 3,000 mm
Width of belt:	100 - 300 mm
Belt: D = 1.2 mm	two layers, PVC black coated
Diameter of rollers:	30.5 mm
Speed of belt:	1.5 - 16 m/min (± 5%)
Motor:	as required

For self assembly, please request parts list and assembly instructions

Description

Article-No.

Conveyor, belt running outside, direct drive, complete 5.111.1120.30030

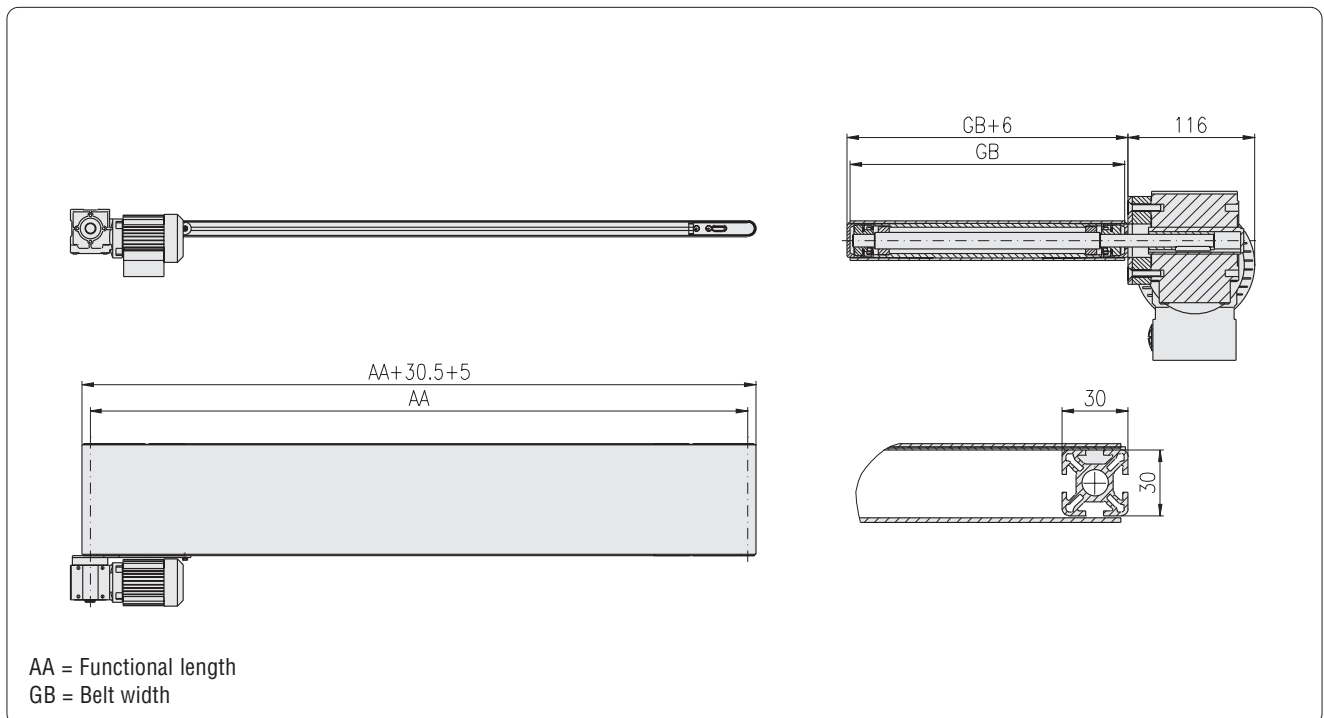
.43P.□□□□x□□□□□

(width×length in mm)

- Profile vertical

- Profile 30x30, 4F, P

Delivery unit without motor

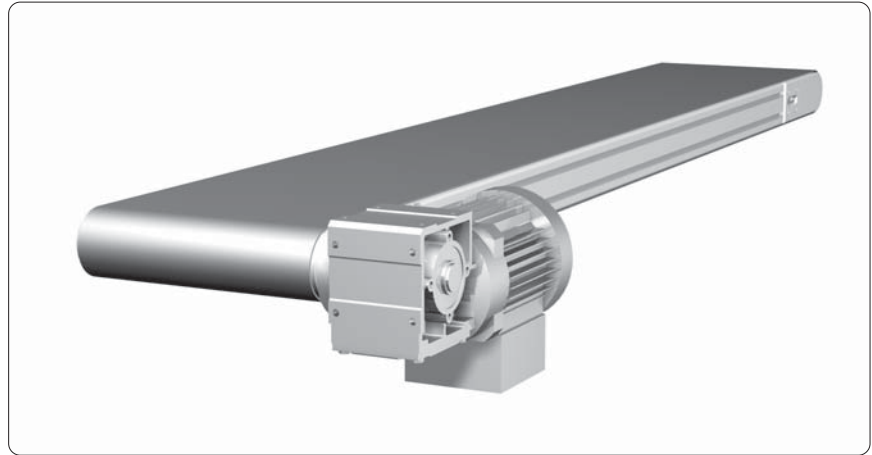


Conveyor

- belt running outside
- direct drive

Profile 30x60

Type: 1120-60030



Technical data

Weight of conveyed material:	max. 30 kg/m
Axle distance:	300 - 6,000 mm
Width of belt:	100 - 600 mm
Belt: D = 2 mm	two layers, PVC black coated
Diameter of rollers:	61 mm
Speed of belt:	2.5 - 60 m/min (± 5%)
Motor:	as required

For self assembly, please request parts list and assembly instructions

Description

Article-No.

Conveyor, belt running outside, direct drive, complete 5.111.1120.60030

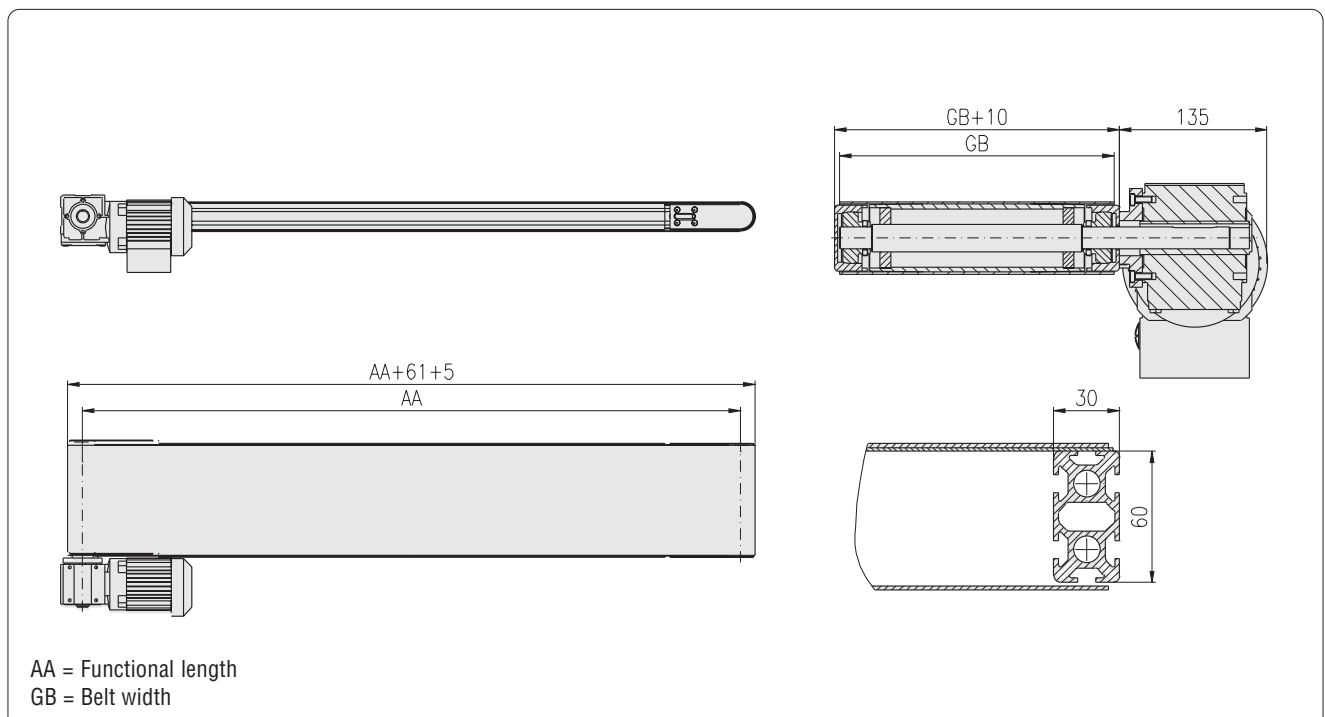
.64L.□□□□×□□□□□

(width×length in mm)

- Profile vertical

- Profile 30x60, 6F, L

Delivery unit without motor

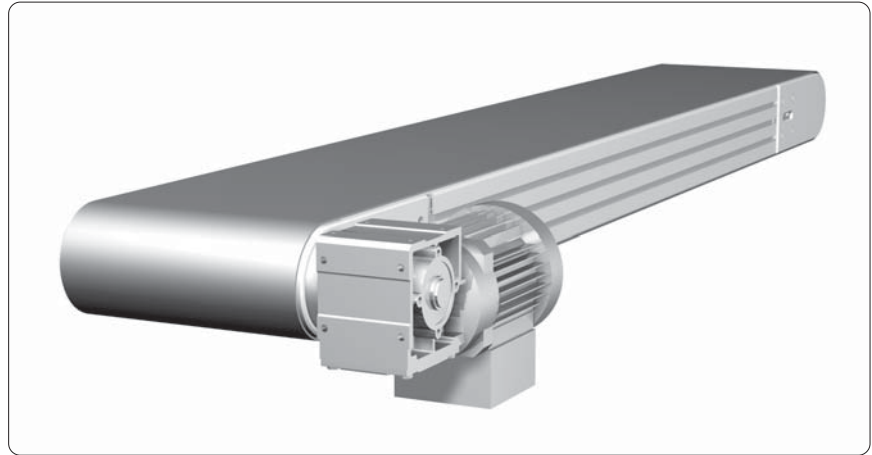


Conveyor

- belt running outside
- direct drive

Profile 30×100

Type: 1120-10030



Technical data

Weight of conveyed material:	max. 70 kg/m
Axle distance:	500 - 12,000 mm
Width of belt:	200 - 1,000 mm
Belt: D = 2 mm	two layers, PVC black coated
Diameter of rollers:	101 mm
Speed of belt:	3.8 - 60 m/min (± 5%)
Motor:	as required

For self assembly, please request parts list and assembly instructions

Description

Article-No.

Conveyor, belt running outside, direct drive, complete 5.111.1120.10030

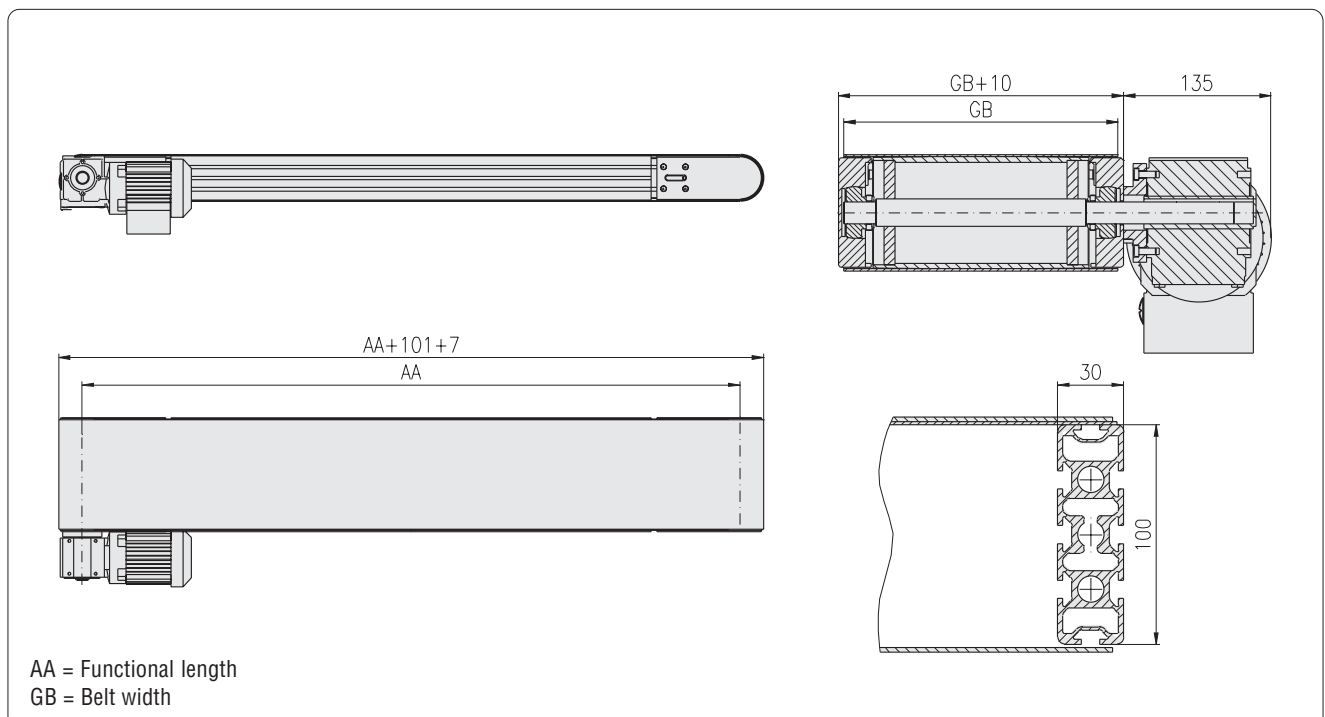
.84P.□□□□×□□□□□

(width×length in mm)

- Profile vertical

- Profile 30×100, 8F, P

Delivery unit without motor



Conveyor

- belt running outside
- drive under belt

Profile 30×30

Type: 1220-30030



Technical data	
Weight of conveyed material:	max. 15 kg/m
Axle distance:	300 - 3,000 mm
Width of belt:	100 - 300 mm
Belt: D = 1.2 mm	two layers, PVC black coated
Diameter of rollers:	30.5 mm
Speed of belt:	1 - 16 m/min (± 5%)
Motor:	as required

For self assembly, please request parts list and assembly instructions

Description

Article-No.

Conveyor, belt running outside, drive under belt, complete 5.111.1220.30030

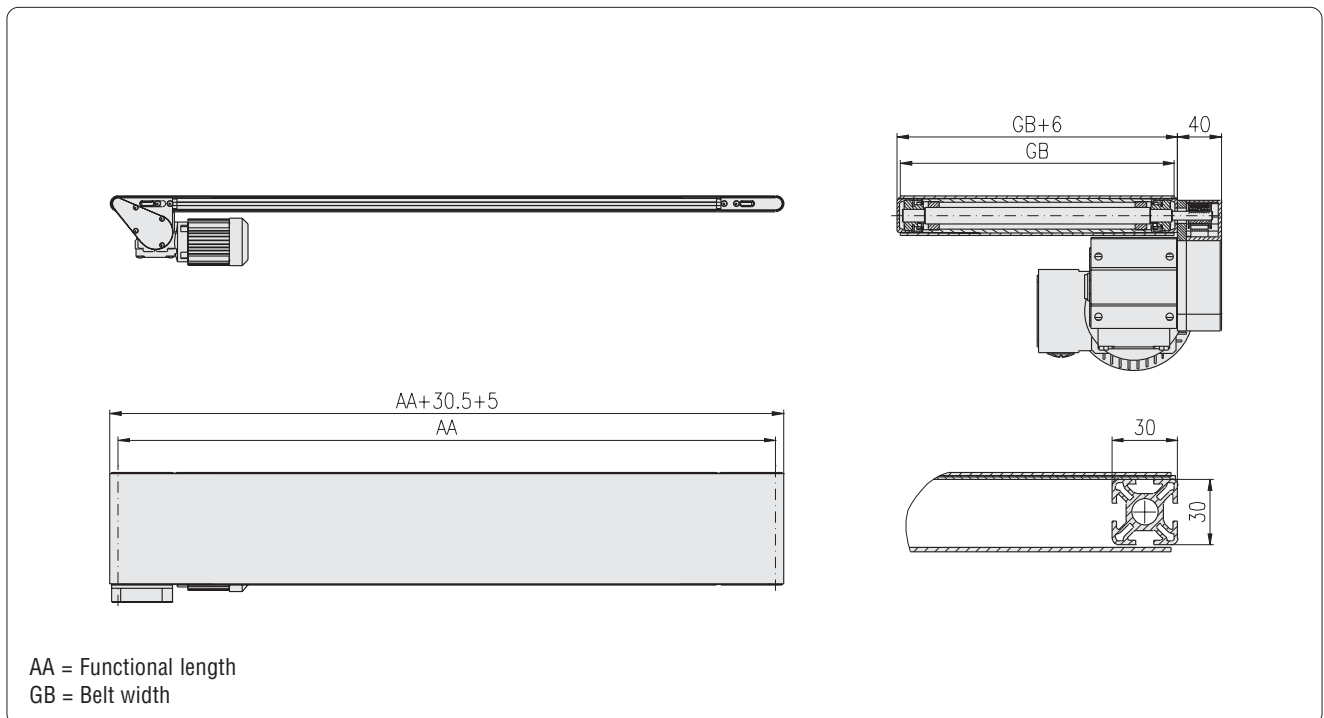
.43P.□□□□×□□□□□

(width×length in mm)

- Profile vertical

- Profile 30×30, 4F, P

Delivery unit without motor



Conveyor

- belt running outside
- drive under belt

Profile 30x60

Type: 1220-60030



Technical data	
Weight of conveyed material:	max. 30 kg/m
Axle distance:	300 - 6,000 mm
Width of belt:	100 - 600 mm
Belt: D = 2 mm	two layers, PVC black coated
Diameter of rollers:	61 mm
Speed of belt:	1.5 - 60 m/min (± 5%)
Motor:	as required

For self assembly, please request parts list and assembly instructions

Description

Article-No.

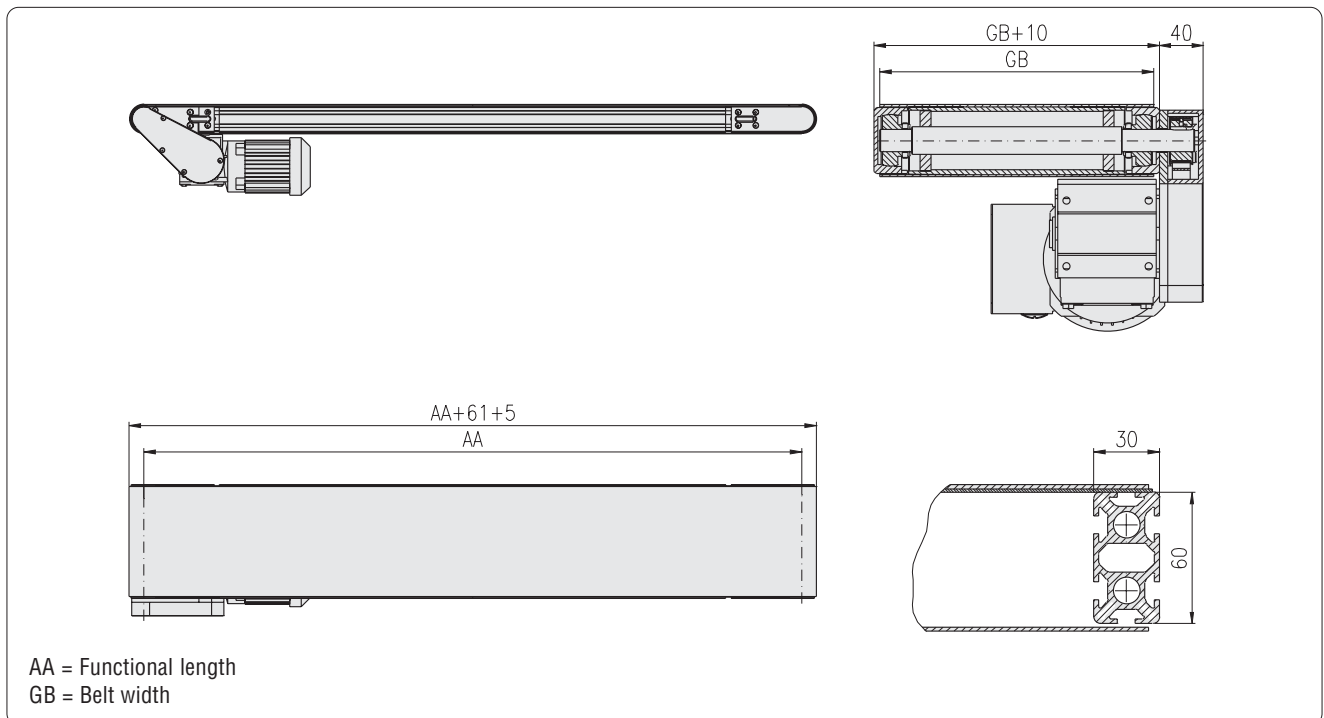
Conveyor, belt running outside, drive under belt, complete 5.111.1220.60030

.64L.□□□□×□□□□□

(width×length in mm)

- Profile vertical
- Profile 30x60, 6F, L

Delivery unit without motor



Conveyor

- belt running outside
- drive under belt

Profile 30x100

Type: 1220-10030



Technical data

Weight of conveyed material:	max. 70 kg/m
Axle distance:	500 - 12,000 mm
Width of belt:	200 - 1,000 mm
Belt: D = 2 mm	two layers, PVC black coated
Diameter of rollers:	101 mm
Speed of belt:	2 - 60 m/min (± 5%)
Motor:	as required

For self assembly, please request parts list and assembly instructions

Description

Article-No.

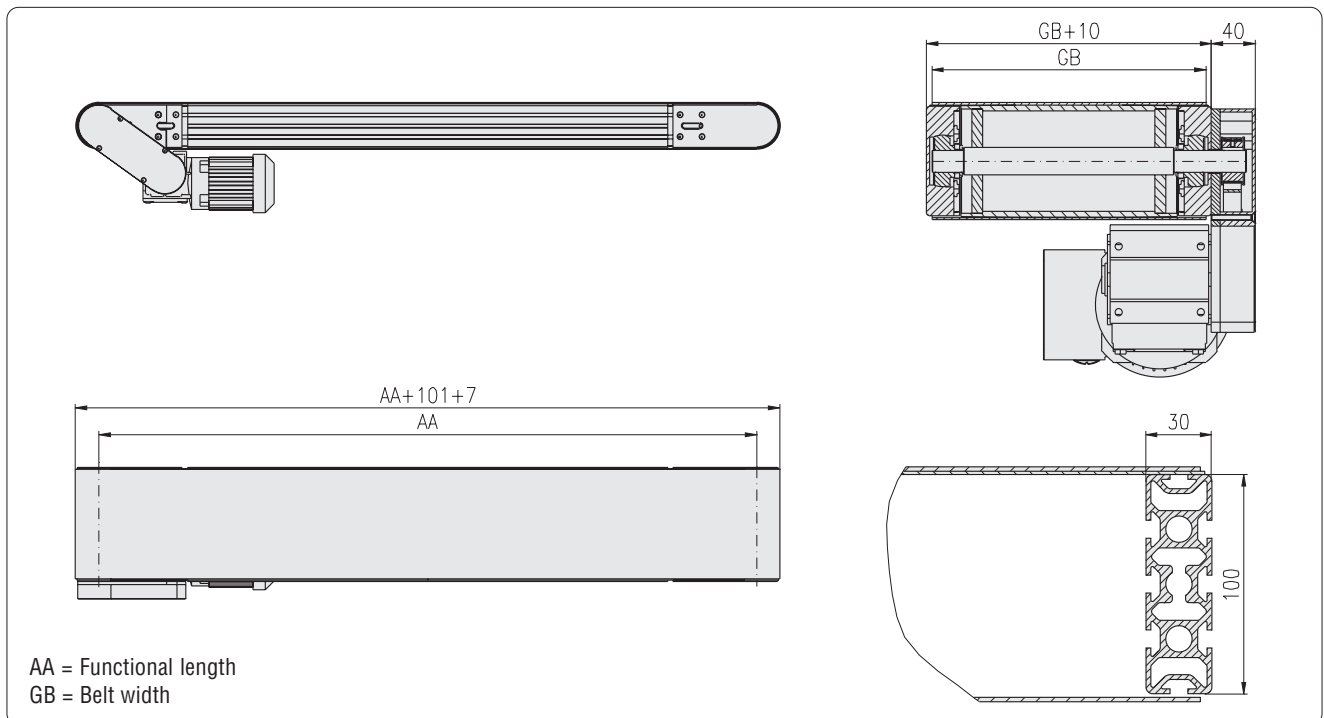
Conveyor, belt running outside, drive under belt, complete 5.111.1220.10030

.84P.□□□□×□□□□□

(width×length in mm)

- Profile vertical
- Profile 30x100, 8F, P

Delivery unit without motor

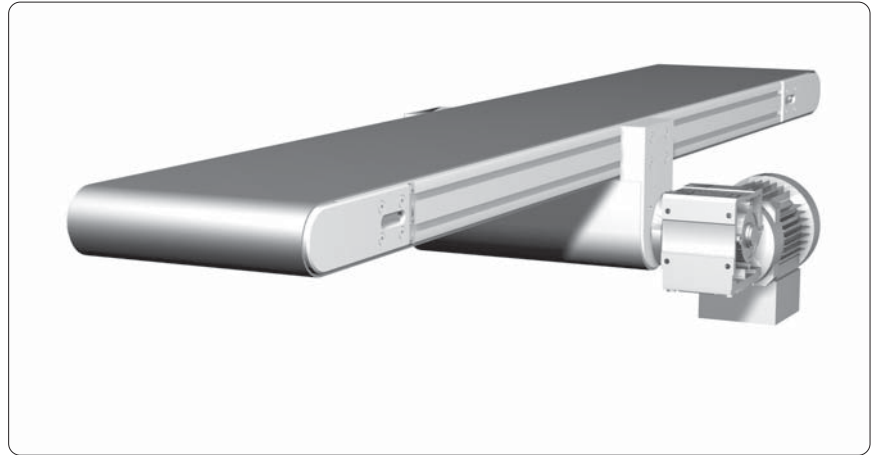


Conveyor

- belt running outside
- center drive

Profile 30x60

Type: 1320-60030



Technical data	
Weight of conveyed material:	max. 30 kg/m
Axle distance:	300 - 6,000 mm
Width of belt:	100 - 600 mm
Belt: D = 1.2 mm	two layers, PVC black coated
Diameter of rollers:	61 mm
Speed of belt:	5 - 60 m/min (± 5%)
Motor:	as required

For self assembly, please request parts list and assembly instructions

Description

Article-No.

Conveyor, belt running outside, center drive, complete

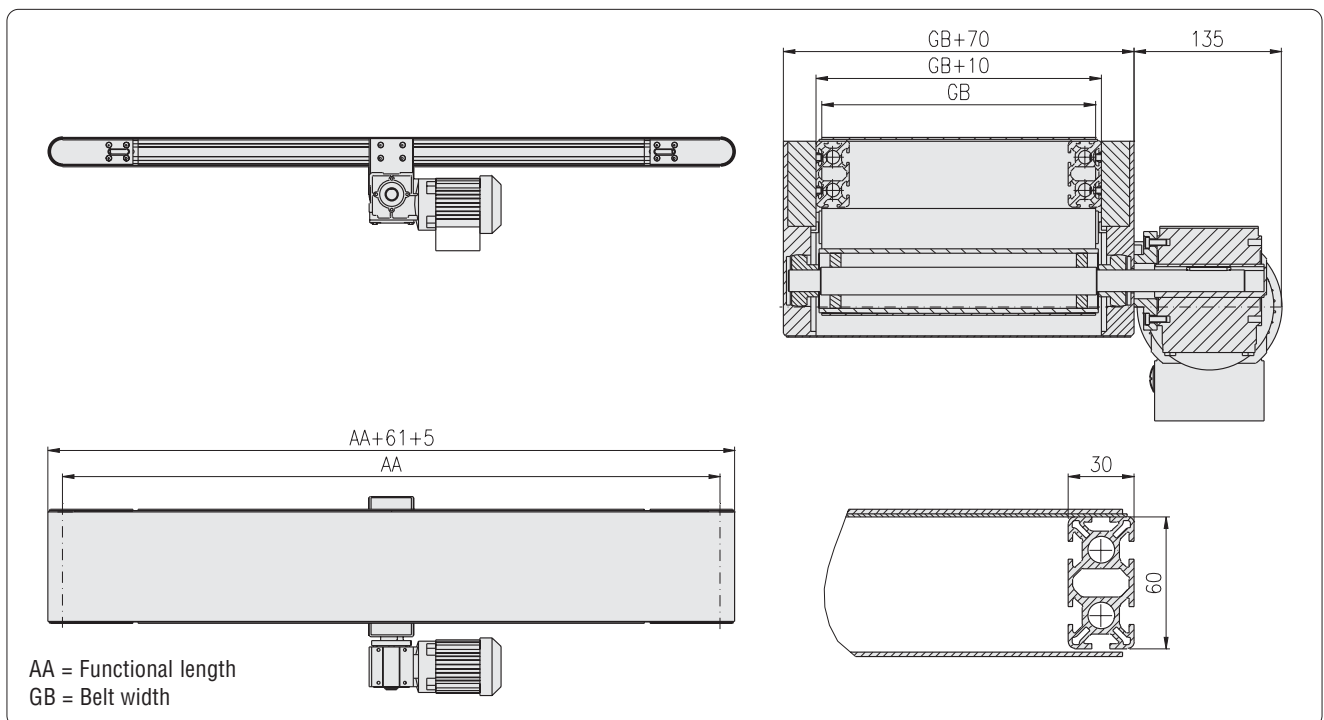
5.111.1320.60030

.64L.□□□□×□□□□□

(width×length in mm)

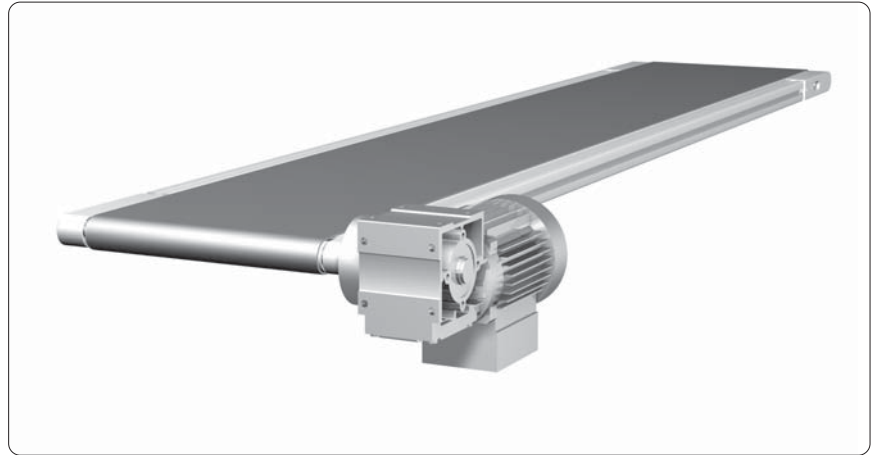
- Profile vertical
- Profile 30x60, 6F, L

Delivery unit without motor



Conveyor

- belt running inside
- direct drive

Profile 30x30
Type: 2121-30030

Technical data

Weight of conveyed material:	max. 15 kg/m
Axle distance:	300 - 3,000 mm
Width of belt:	100 - 300 mm
Belt: D = 1.2 mm	two layers, PVC black coated
Diameter of rollers:	28 mm
Speed of belt:	1.5 - 16 m/min (± 5%)
Motor:	as required

For self assembly, please request parts list and assembly instructions

Description
Article-No.

Conveyor, belt running inside, direct drive, complete

5.111.2121.30030

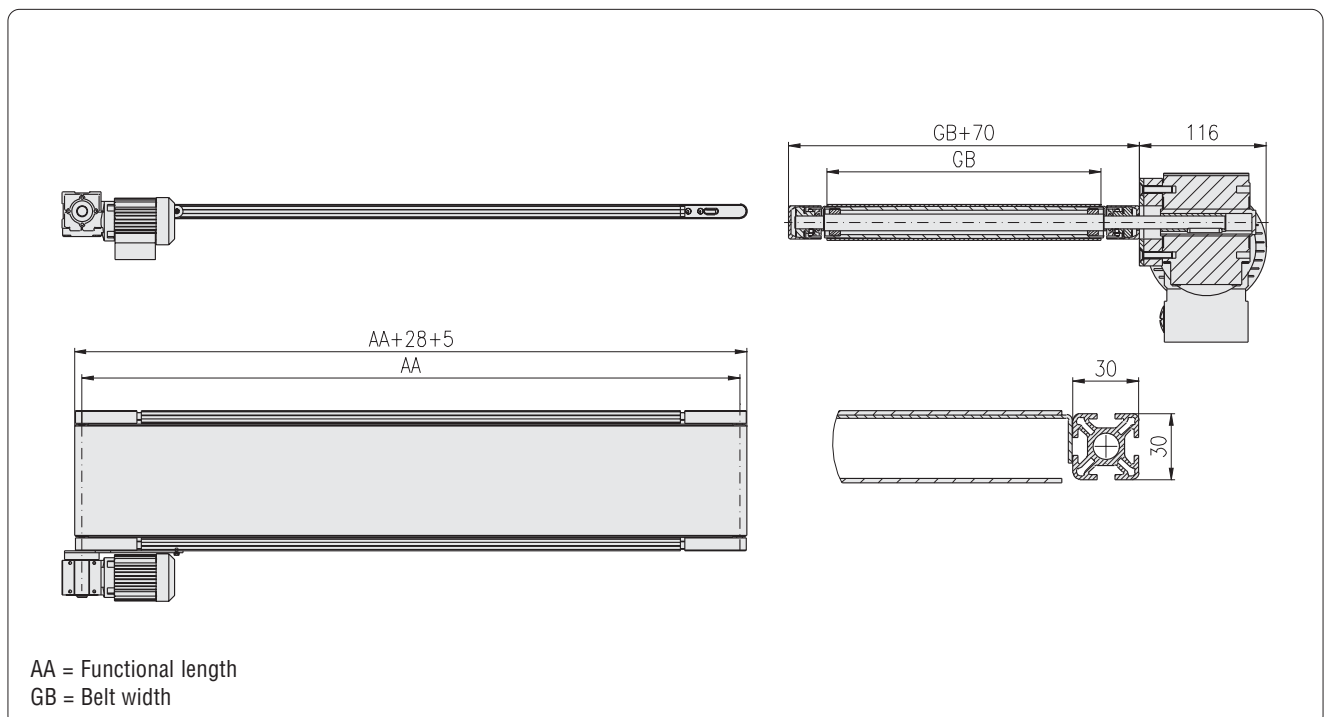
.43P.□□□□×□□□□□

(width×length in mm)

- Profile vertical

- Profile 30x30, 4F, P

Delivery unit without motor

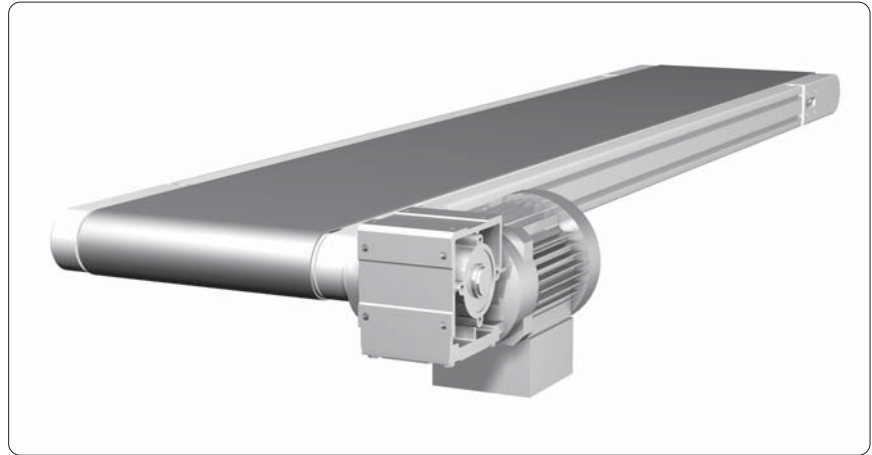


Conveyor

- belt running inside
- direct drive

Profile 30x60

Type: 2121-60030



Technical data

Weight of conveyed material:	max. 30 kg/m
Axle distance:	300 - 6,000 mm
Width of belt:	100 - 600 mm
Belt: D = 2 mm	two layers, PVC black coated
Diameter of rollers:	58 mm
Speed of belt:	2.5 - 60 m/min (± 5%)
Motor:	as required

For self assembly, please request parts list and assembly instructions

Description

Article-No.

Conveyor, belt running inside, direct drive, complete 5.111.2121.60030

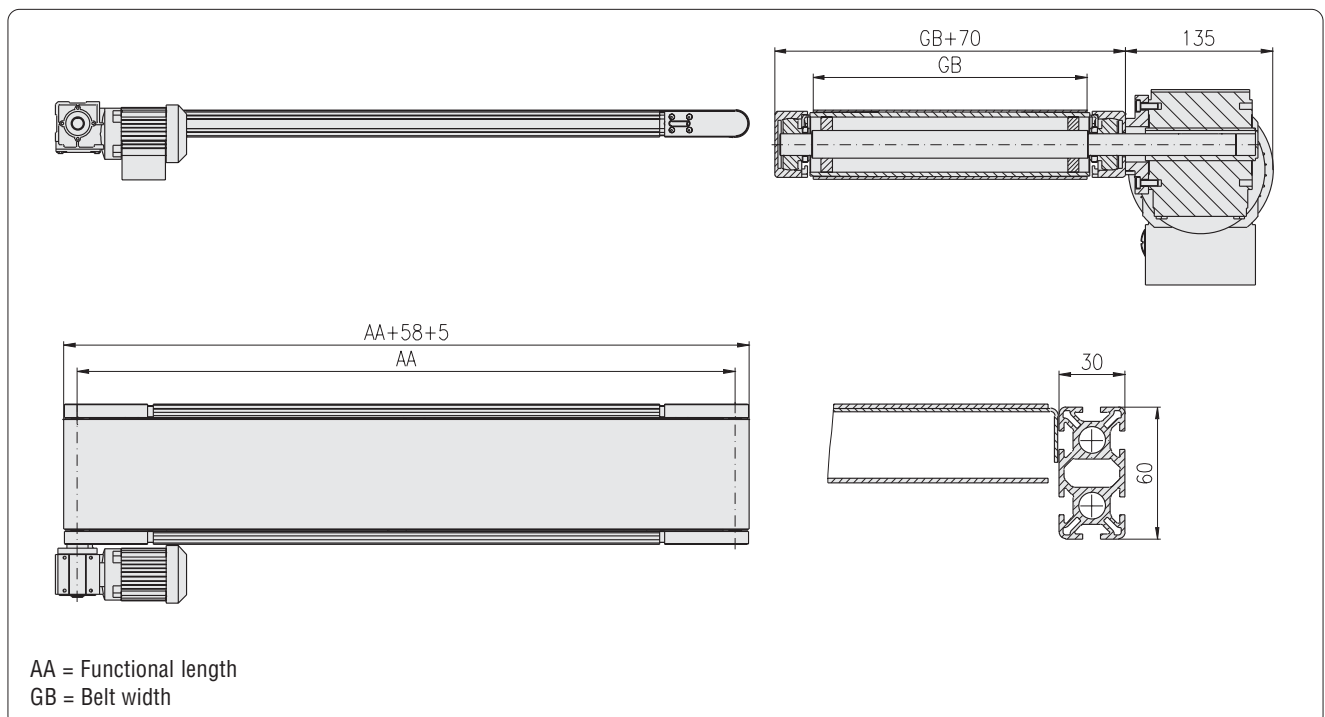
.64L.□□□□×□□□□

(width×length in mm)

- Profile vertical

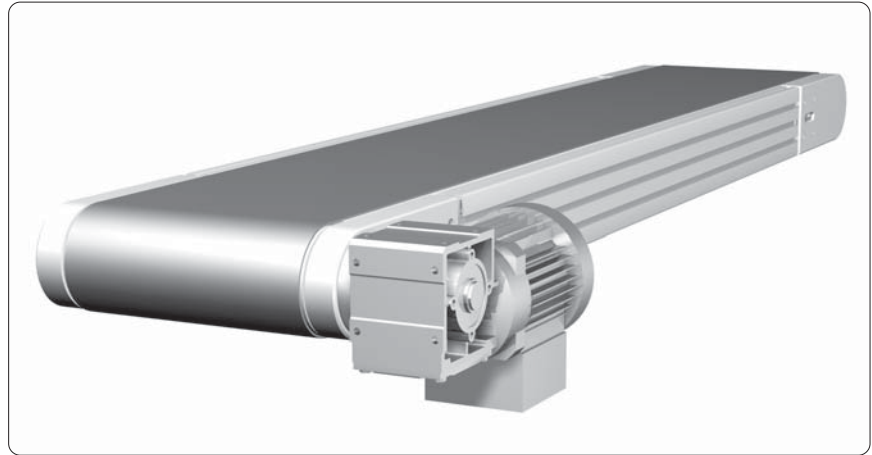
- Profile 30x60, 6F, L

Delivery unit without motor



Conveyor

- belt running inside
- direct drive

Profile 30×100
Type: 2121-10030

Technical data

Weight of conveyed material:	max. 70 kg/m
Axle distance:	500 - 12,000 mm
Width of belt:	200 - 1,00 mm
Belt: D = 2 mm	two layers, PVC black coated
Diameter of rollers:	98 mm
Speed of belt:	3.8 - 60 m/min (± 5%)
Motor:	as required

For self assembly, please request parts list and assembly instructions

Description
Article-No.

Conveyor, belt running inside, direct drive, complete

5.111.2121.10030

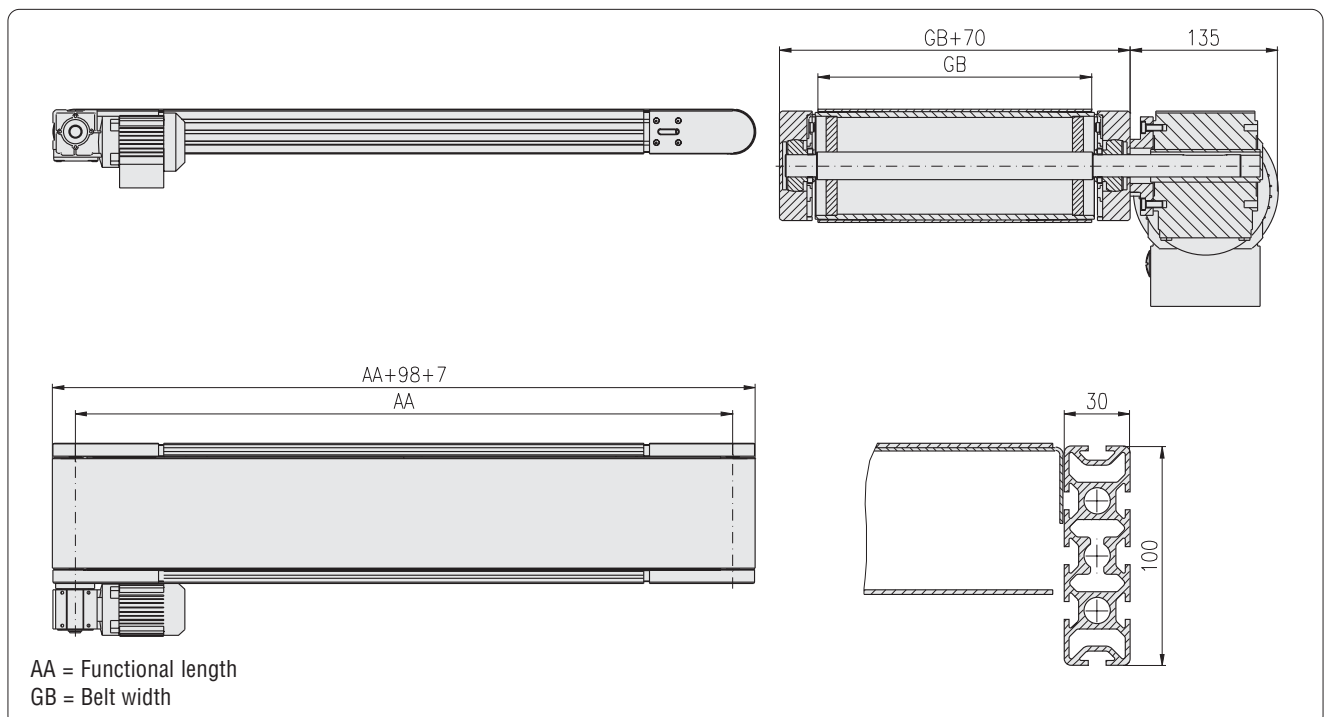
.84P.□□□□×□□□□□

(width×length in mm)

- Profile vertical

- Profile 30×100, 8F, P

Delivery unit without motor

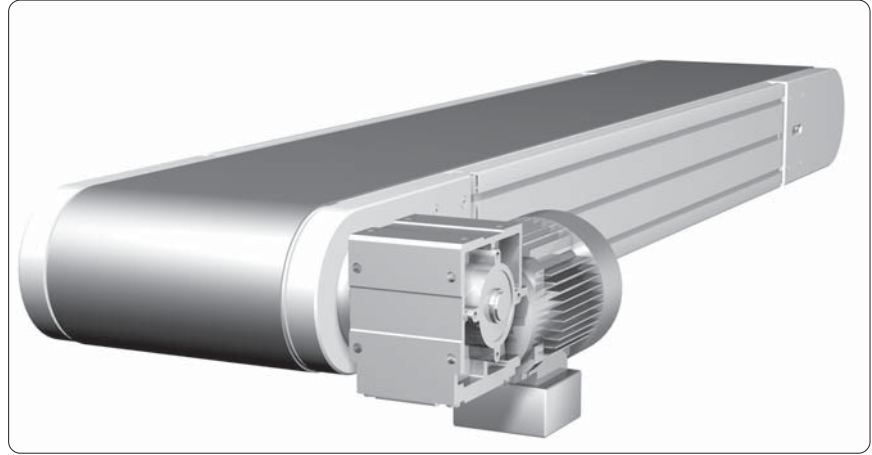


Conveyor

- belt running inside
- direct drive

Profile 30x150

Type: 2121-15030



Technical data	
Weight of conveyed material:	max. 110 kg/m
Axle distance:	500 - 12,000 mm
Width of belt:	300 - 1,300 mm
Belt: D = 2 mm	two layers, PVC black coated
Diameter of rollers:	148 mm
Speed of belt:	5.6 - 60 m/min (± 5%)
Motor:	as required

For self assembly, please request parts list and assembly instructions

Description

Article-No.

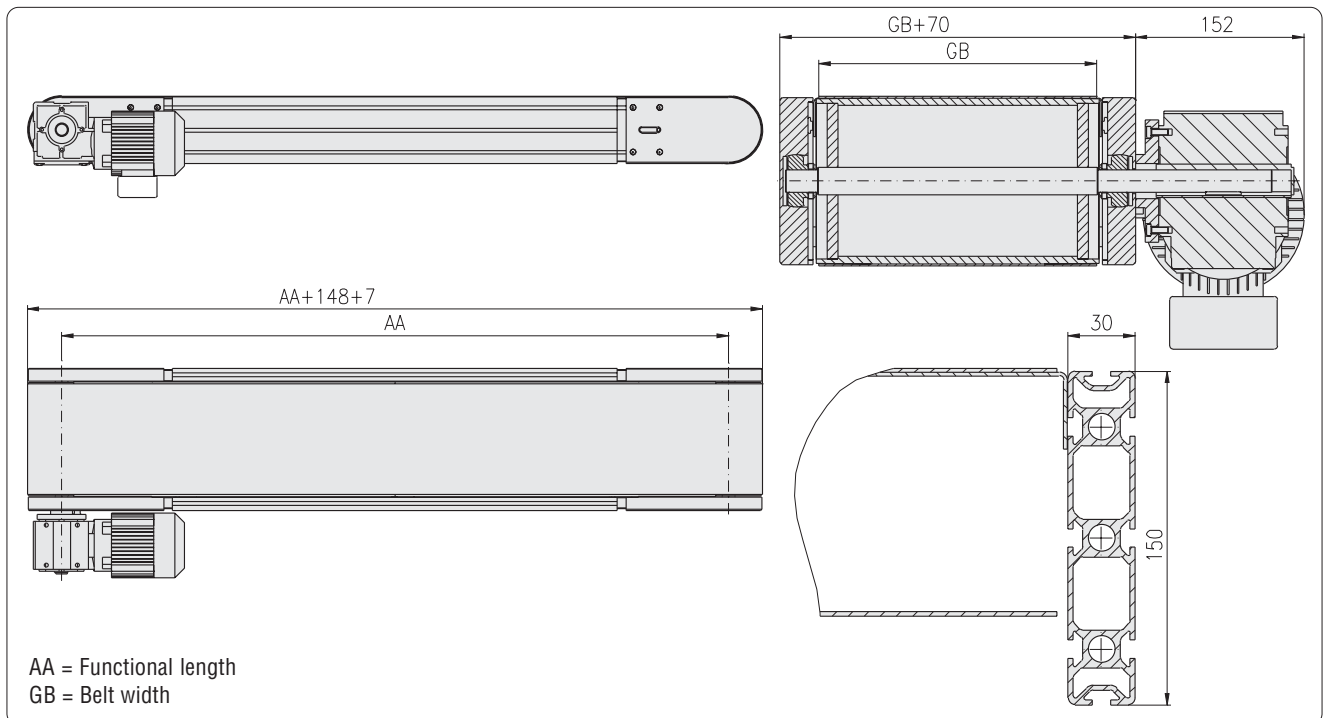
Conveyor, belt running inside, direct drive, complete 5.111.2121.15030

.85P.□□□□×□□□□□

(width×length in mm)

- Profile vertical
- Profile 30x150, 8F, P

Delivery unit without motor



Conveyor

- belt running inside
- drive under belt

Profile 30x30

Type: 2221-30030



Technical data	
Weight of conveyed material:	max. 15 kg/m
Axle distance:	300 - 3,000 mm
Width of belt:	100 - 300 mm
Belt: D = 1.2 mm	two layers, PVC black coated
Diameter of rollers:	28 mm
Speed of belt:	1 - 16 m/min (± 5%)
Motor:	as required

For self assembly, please request parts list and assembly instructions

Description

Article-No.

Conveyor, belt running inside, drive under belt, complete 5.111.2221.30030

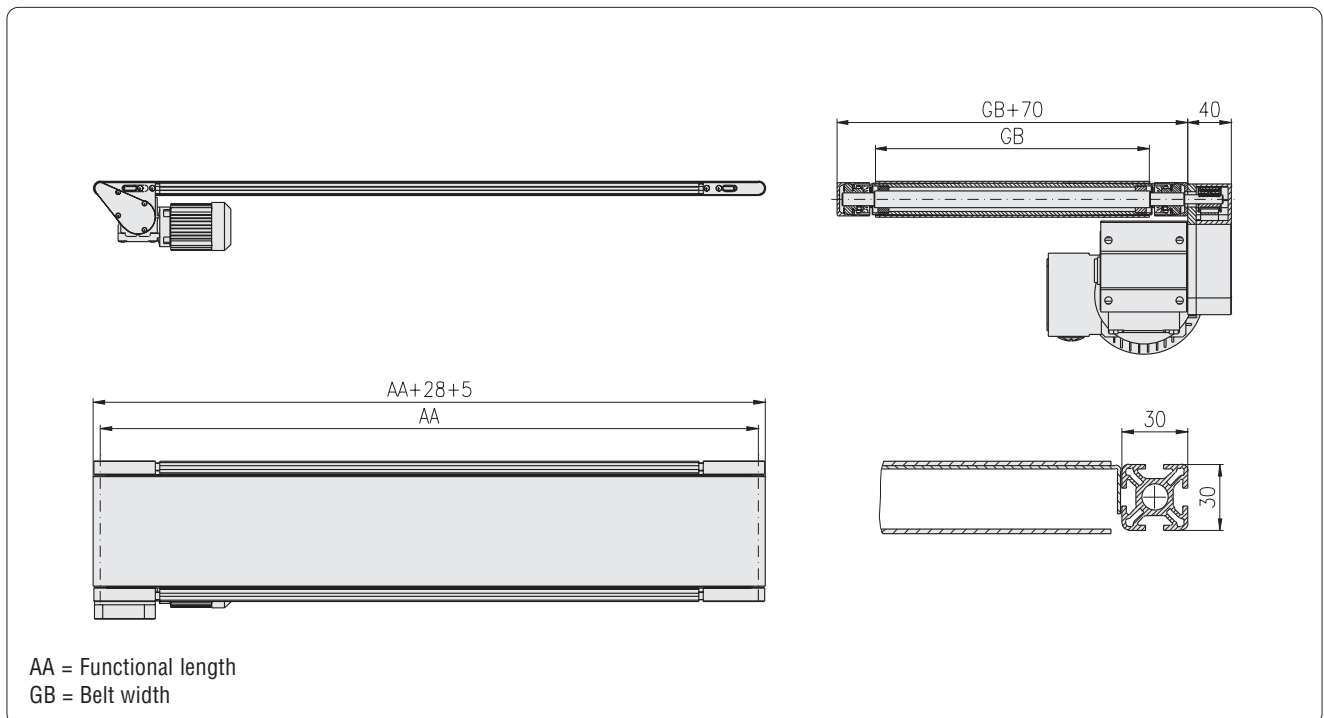
.43P.□□□□×□□□□□

(width×length in mm)

- Profile vertical

- Profile 30x30, 4F, P

Delivery unit without motor

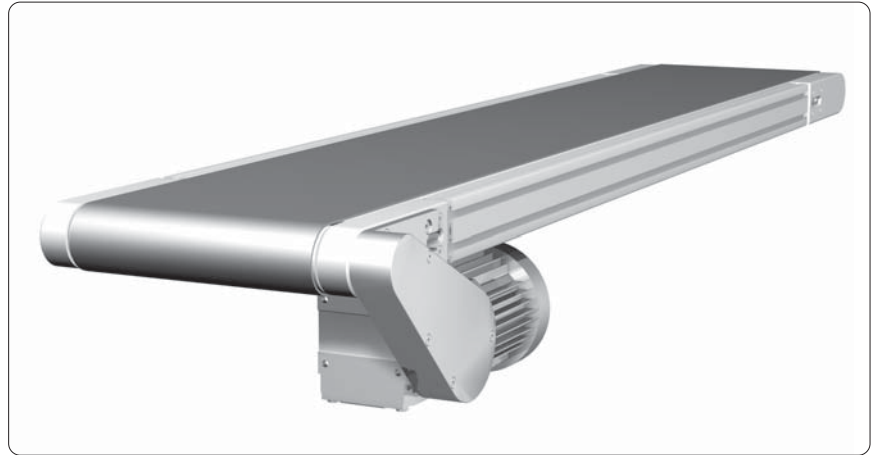


Conveyor

- belt running inside
- drive under belt

Profile 30x60

Type: 2221-60030



Technical data

Weight of conveyed material:	max. 30 kg/m
Axle distance:	300 - 6,000 mm
Width of belt:	100 - 600 mm
Belt: D = 2 mm	two layers, PVC black coated
Diameter of rollers:	58 mm
Speed of belt:	1.5 - 60 m/min (± 5%)
Motor:	as required

For self assembly, please request parts list and assembly instructions

Description

Article-No.

Conveyor, belt running inside, drive under belt, complete

5.111.2221.60030

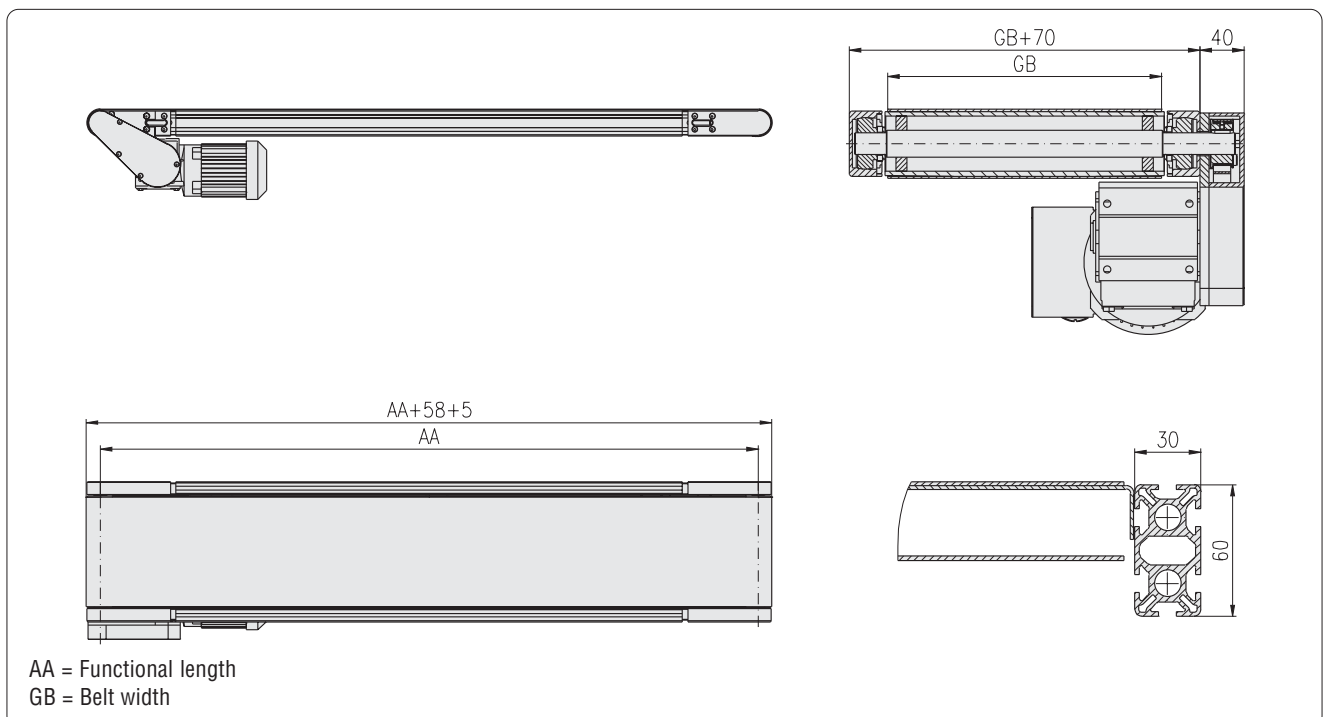
.64L.□□□□×□□□□□

(width×length in mm)

- Profile vertical

- Profile 30x60, 6F, L

Delivery unit without motor



Conveyor

- belt running inside
- drive under belt

Profile 30x100

Type: 2221-10030



Technical data

Weight of conveyed material:	max. 70 kg/m
Axle distance:	500 - 12,000 mm
Width of belt:	200 - 1,000 mm
Belt: D = 2 mm	two layers, PVC black coated
Diameter of rollers:	98 mm
Speed of belt:	2 - 60 m/min (± 5%)
Motor:	as required

For self assembly, please request parts list and assembly instructions

Description

Article-No.

Conveyor, belt running inside, drive under belt, complete

5.111.2221.10030

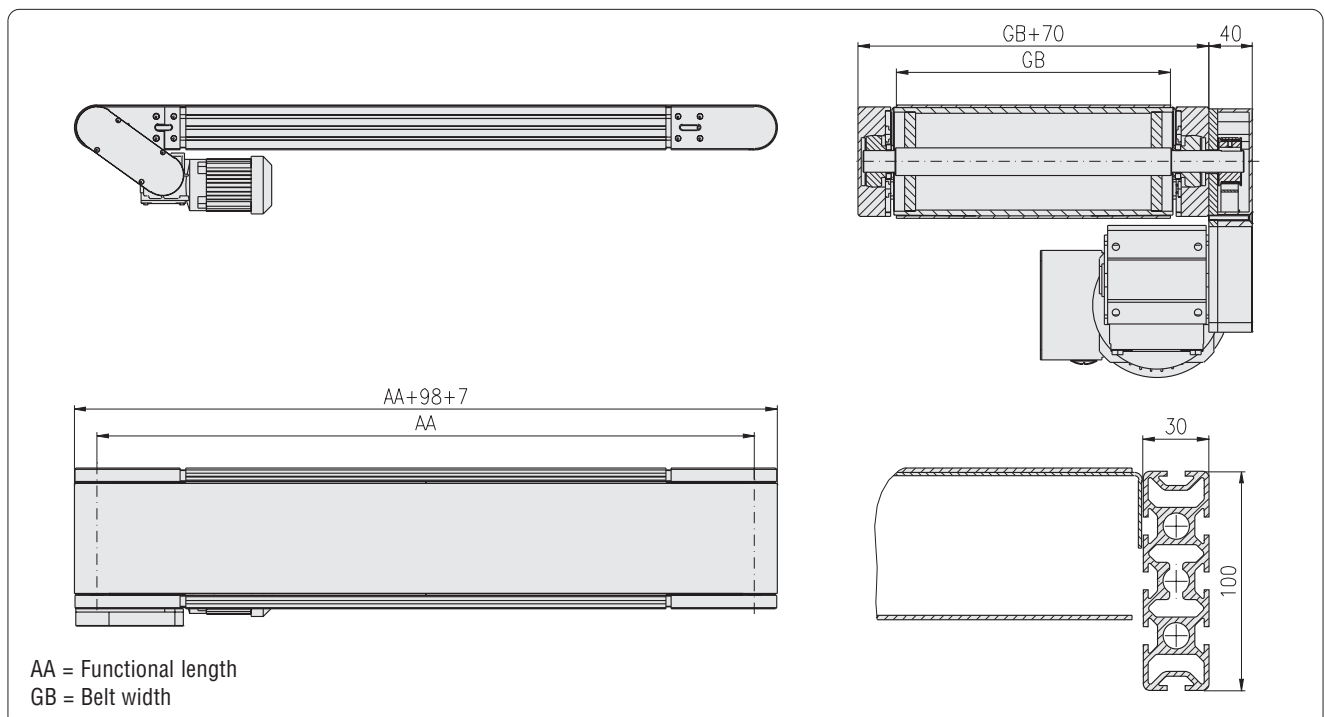
.84P.□□□□×□□□□□

(width×length in mm)

- Profile vertical

- Profile 30x100, 8F, P

Delivery unit without motor

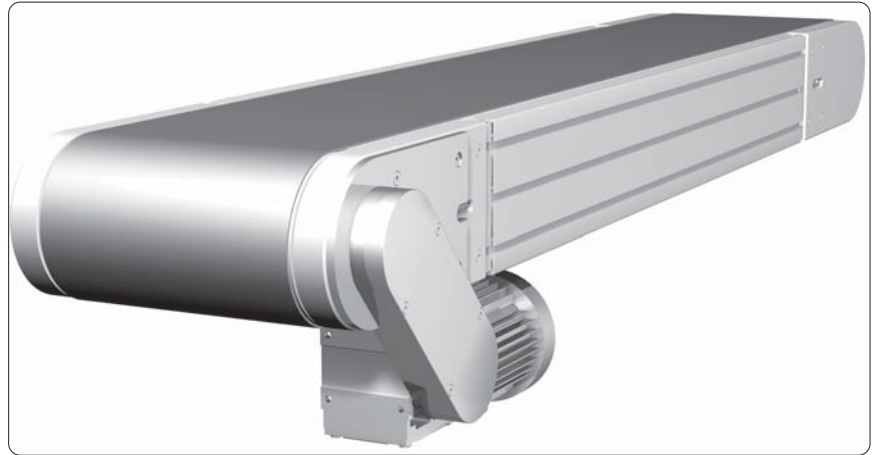


Conveyor

- belt running inside
- drive under belt

Profile 30×150

Type: 2221-15030



Technical data

Weight of conveyed material:	max. 110 kg/m
Axle distance:	500 - 12,000 mm
Width of belt:	300 - 1,300 mm
Belt: D = 2 mm	two layers, PVC black coated
Diameter of rollers:	148 mm
Speed of belt:	3 - 60 m/min (± 5%)
Motor:	as required

For self assembly, please request parts list and assembly instructions

Description

Article-No.

Conveyor, belt running inside, drive under belt, complete

5.111.2221.15030

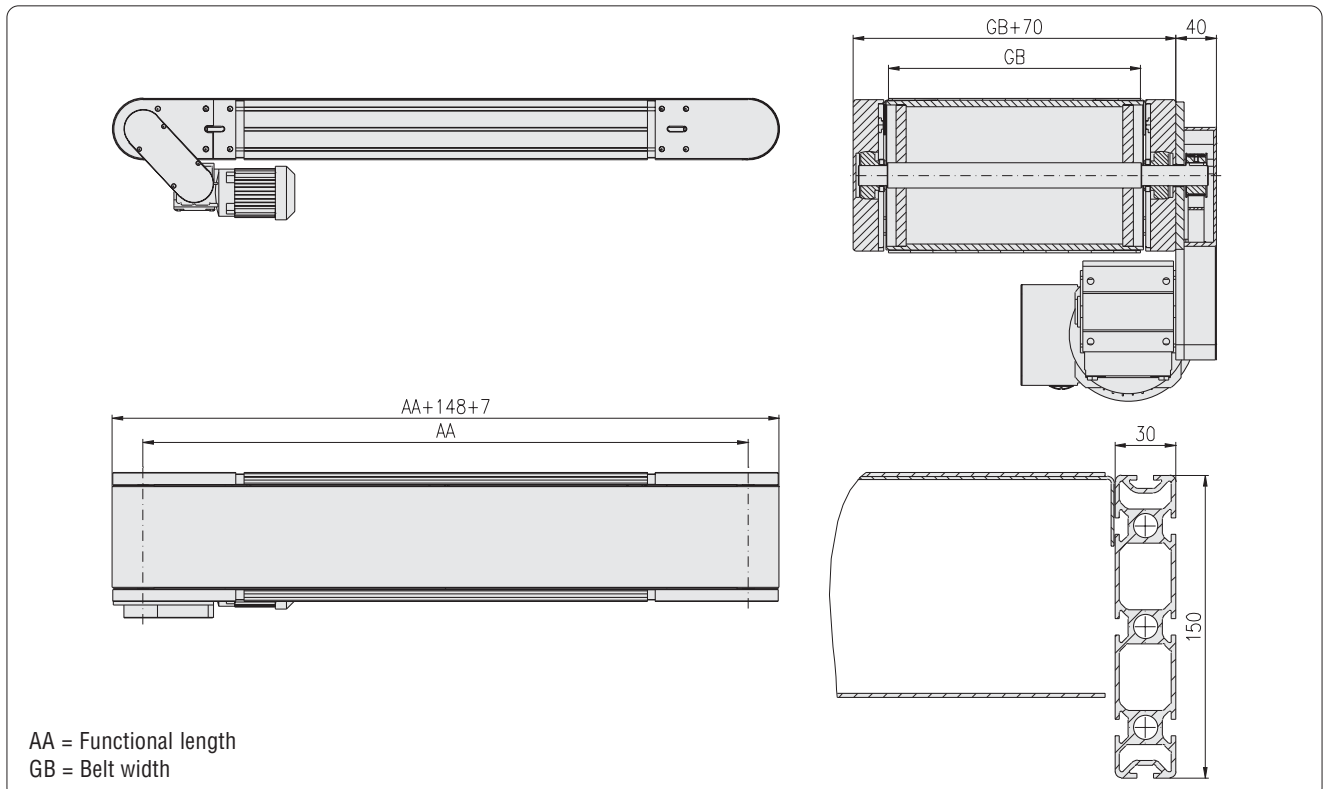
.85P.□□□□×□□□□□

(width×length in mm)

- Profile vertical

- Profile 30×150, 8F, P

Delivery unit without motor

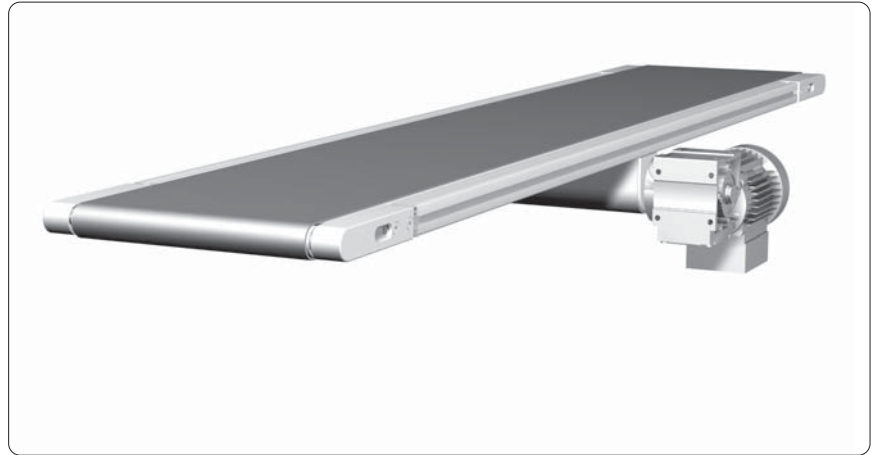


Conveyor

- belt running inside
- center drive

Profile 30x30

Type: 2321-30030



Technical data	
Weight of conveyed material:	max. 15 kg/m
Axle distance:	300 - 3,000 mm
Width of belt:	100 - 300 mm
Belt: D = 1.2 mm	two layers, PVC black coated
Diameter of rollers:	28 mm
Speed of belt:	3 - 16 m/min (± 5%)
Motor:	as required

For self assembly, please request parts list and assembly instructions

Description

Article-No.

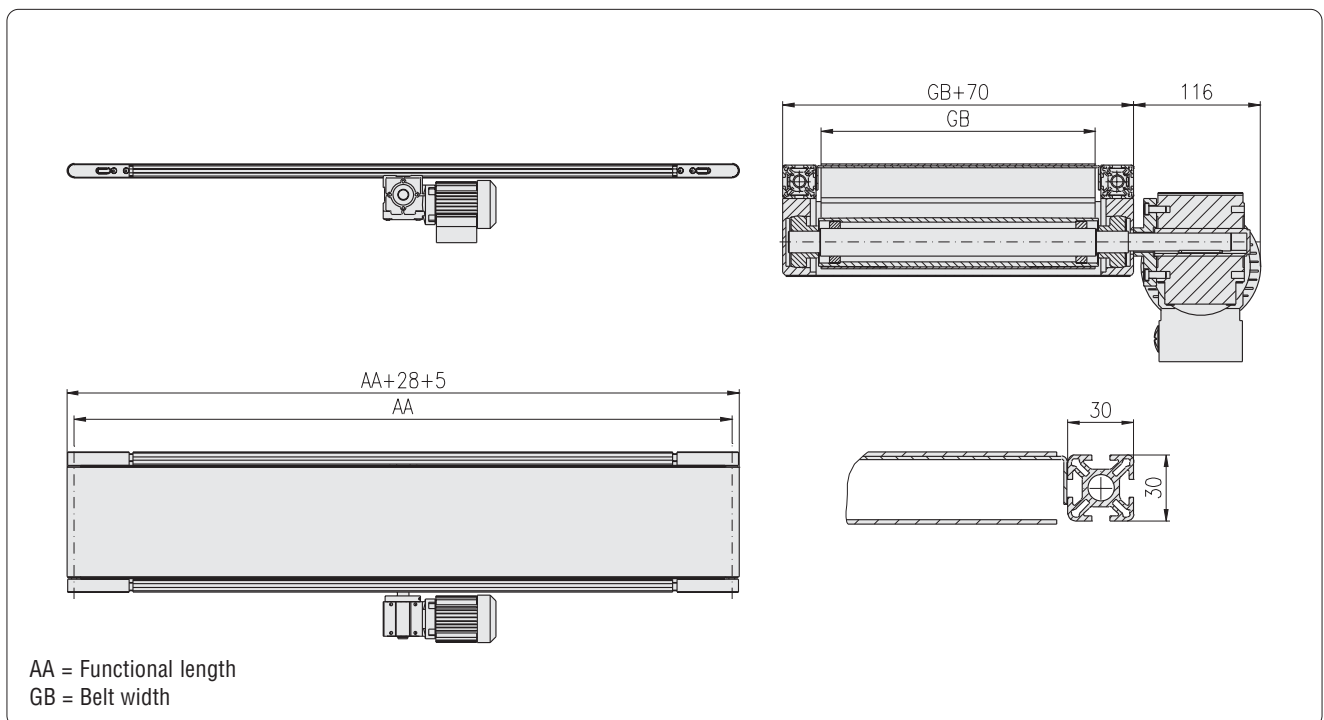
Conveyor, belt running inside, center drive, complete 5.111.2321.30030

.43P.□□□□×□□□□□

(width×length in mm)

- Profile vertical
- Profile 30x30, 4F, P

Delivery unit without motor

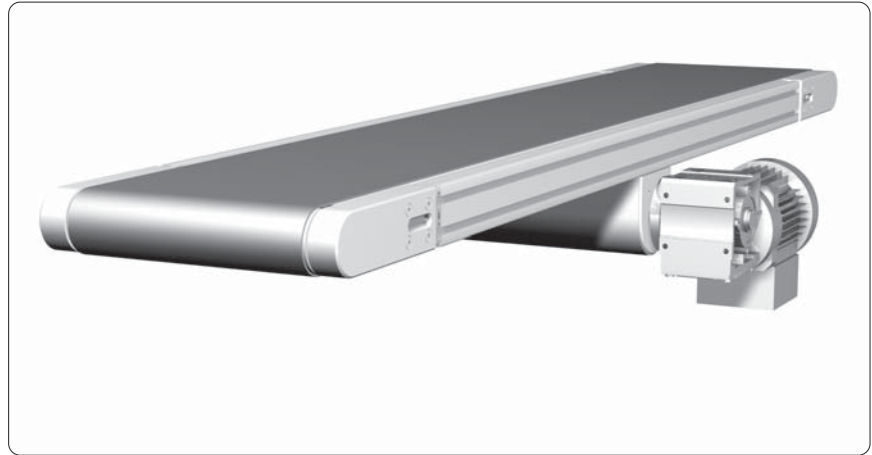


Conveyor

- belt running inside
- center drive

Profile 30x60

Type: 2321-60030



Technical data

Weight of conveyed material:	max. 30 kg/m
Axle distance:	300 - 6,000 mm
Width of belt:	100 - 600 mm
Belt: D = 1.2 mm	two layers, PVC black coated
Diameter of rollers:	58 mm
Speed of belt:	5 - 60 m/min (± 5%)
Motor:	as required

For self assembly, please request parts list and assembly instructions

Description

Article-No.

Conveyor, belt running inside, center drive, complete

5.111.2321.60030

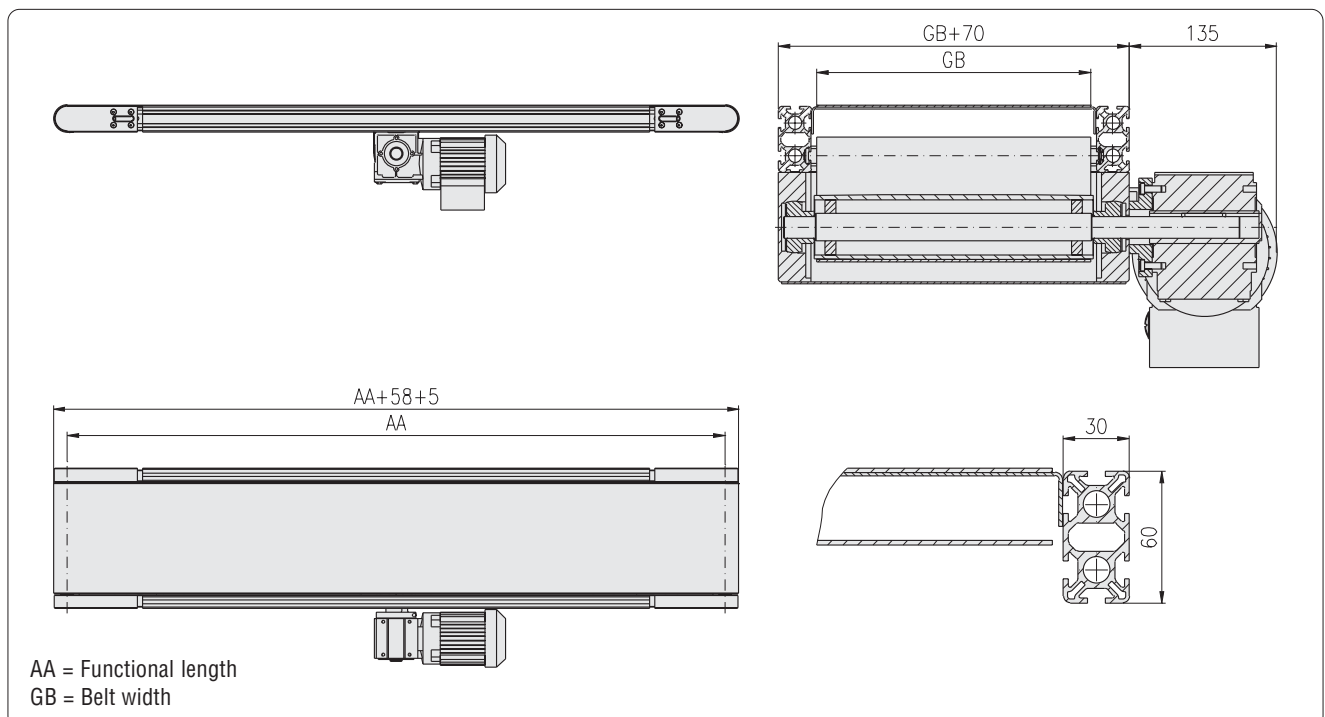
.64L.□□□□×□□□□□

(width×length in mm)

- Profile vertical

- Profile 30x60, 6F, L

Delivery unit without motor

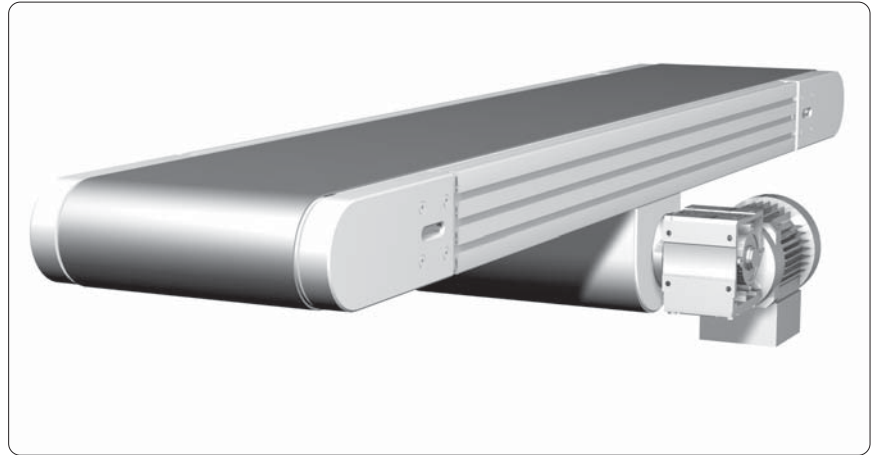


Conveyor

- belt running inside
- center drive

Profile 30×100

Type: 2321-10030



Technical data

Weight of conveyed material:	max. 70 kg/m
Axle distance:	500 - 12,000 mm
Width of belt:	200 - 1,000 mm
Belt: D = 2 mm	two layers, PVC black coated
Diameter of rollers:	98 mm
Speed of belt:	5 - 60 m/min (± 5%)
Motor:	as required

For self assembly, please request parts list and assembly instructions

Description

Conveyor, belt running inside, center drive, complete

Article-No.

5.111.2321.10030

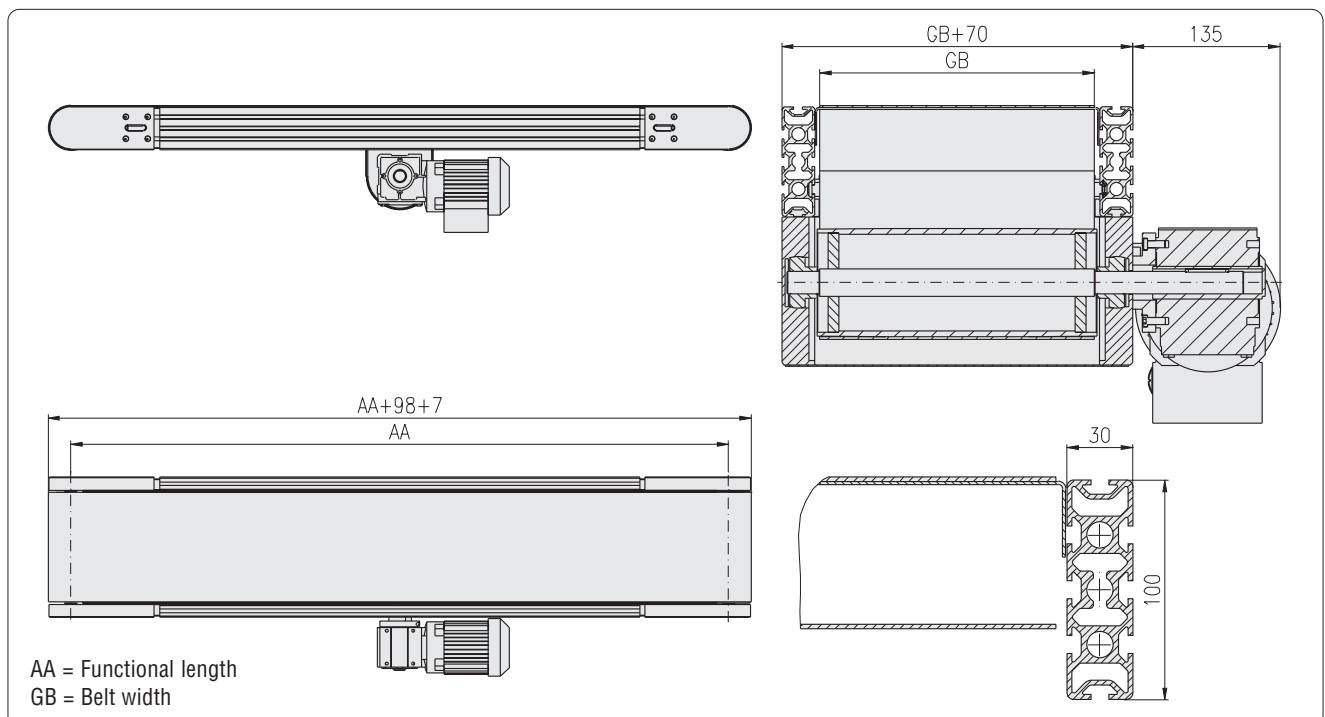
.84P.□□□□×□□□□□

(width×length in mm)

- Profile vertical

- Profile 30×100, 8F, P

Delivery unit without motor

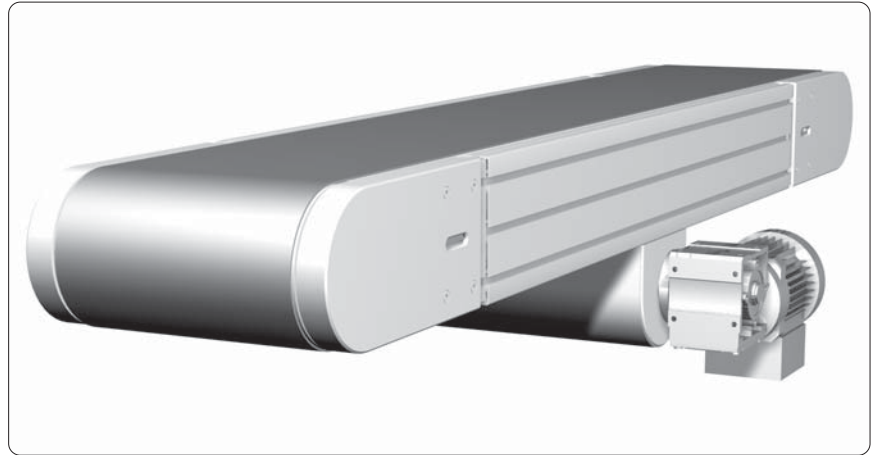


Conveyor

- belt running inside
- center drive

Profile 30x150

Type: 2321-15030



Technical data	
Weight of conveyed material:	max. 110 kg/m
Axle distance:	500 - 12,000 mm
Width of belt:	300 - 1,300 mm
Belt: D = 2 mm	two layers, PVC black coated
Diameter of rollers:	148 mm
Speed of belt:	5 - 60 m/min (± 5%)
Motor:	as required

For self assembly, please request parts list and assembly instructions

Description

Article-No.

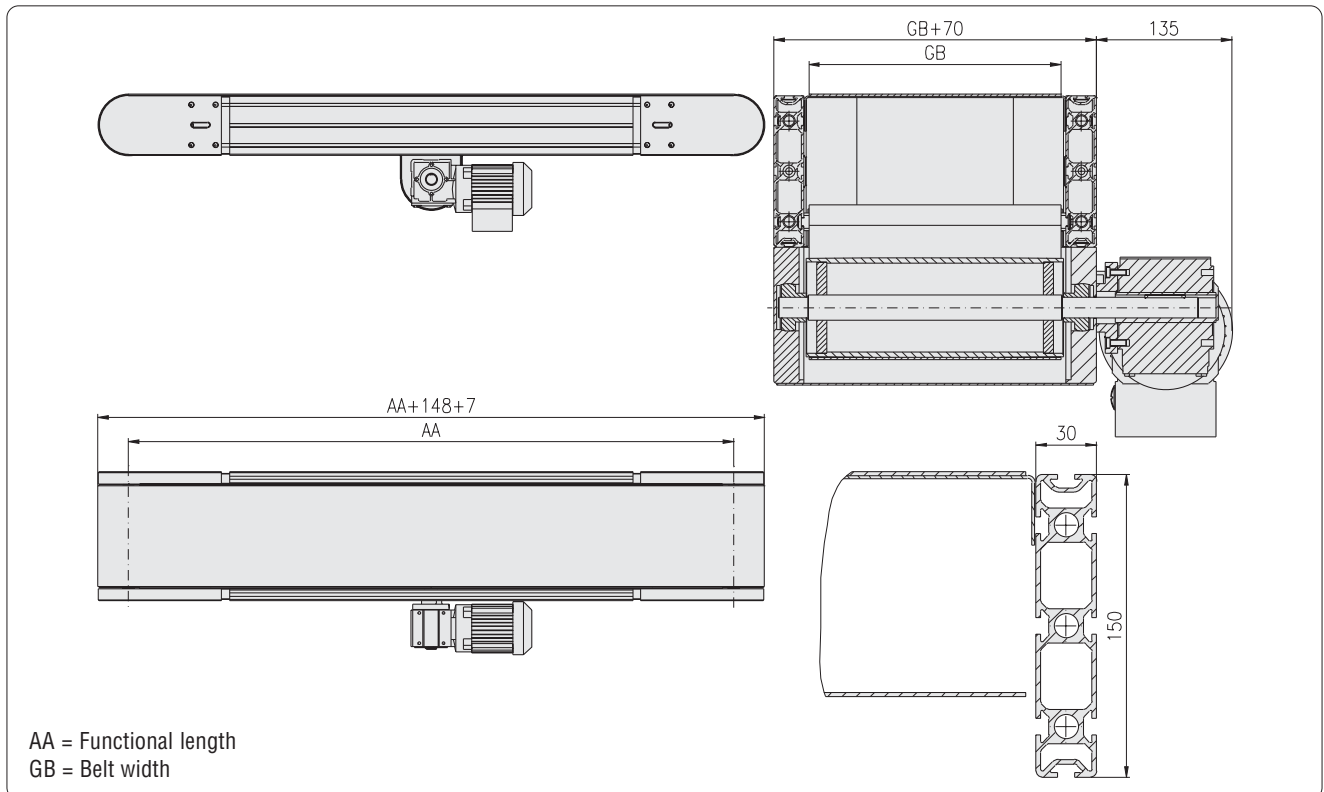
Conveyor, belt running inside, center drive, complete 5.111.2321.15030

.85P.□□□□×□□□□□

(width×length in mm)

- Profile vertical
- Profile 30x150, 8F, P

Delivery unit without motor

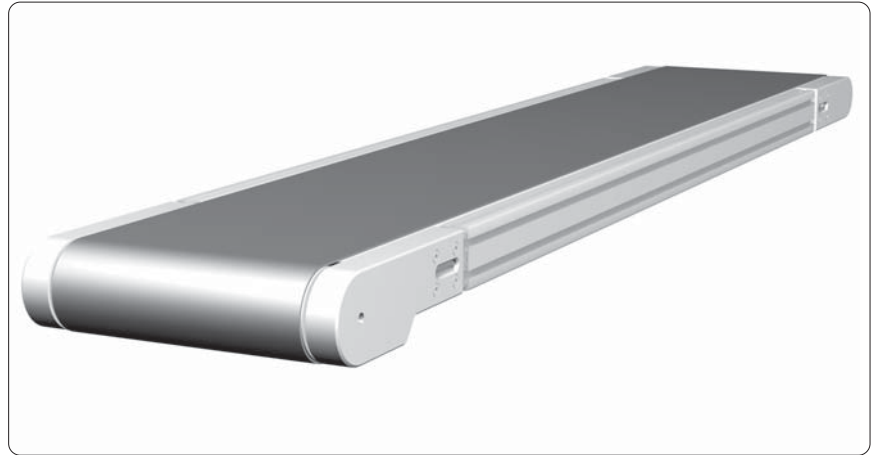


Conveyor

- belt running inside
- axial cylinder motor

Profile 30x60

Type: 2421-60030



Technical data

Weight of conveyed material:	max. 15 kg/m
Axle distance:	500 - 6,000 mm
Width of belt:	300 - 600 mm
Belt: D = 1.2 mm	two layers, PVC black coated
Diameter of rollers:	81/58 mm
Speed of belt:	6 - 60 m/min (± 5%)
Motor:	as required

For self assembly, please request parts list and assembly instructions

Description

Article-No.

Conveyor, belt running inside, axial cylinder motor, complete 5.111.2421.60030

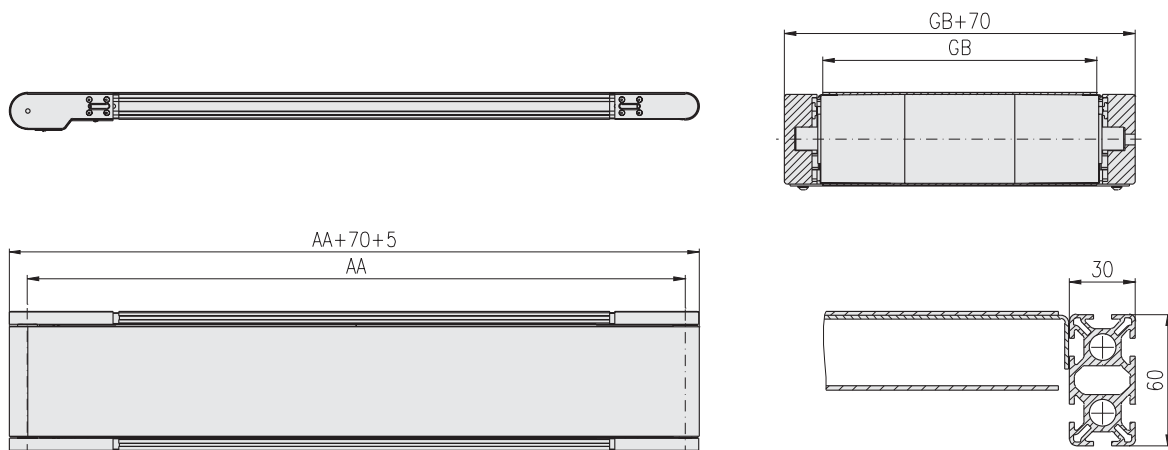
.64L.□□□□x□□□□□

(width×length in mm)

- Profile vertical

- Profile 30x60, 6F, L

Delivery unit without motor



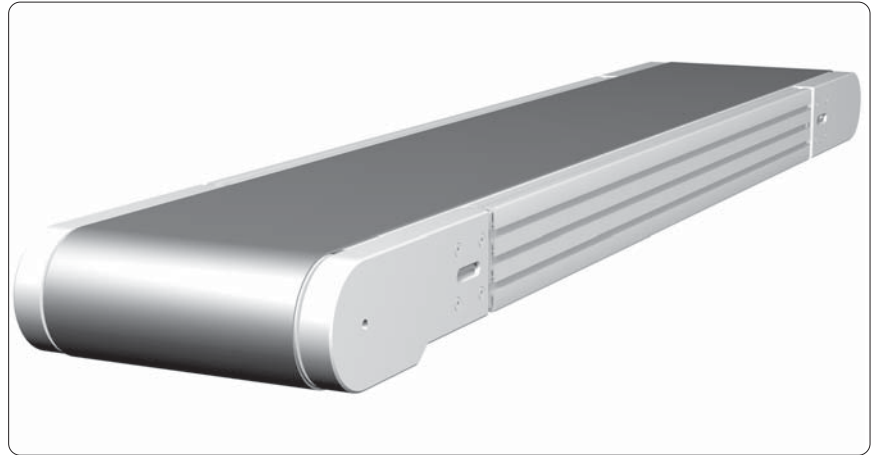
AA = Functional length
GB = Belt width

Conveyor

- belt running inside
- axial cylinder motor

Profile 30x100

Type: 2421-10030



Technical data

Weight of conveyed material:	max. 40 kg/m
Axle distance:	500 - 12,000 mm
Width of belt:	300 - 1,000 mm
Belt: D = 2 mm	two layers, PVC black coated
Diameter of rollers:	112/98 mm
Speed of belt:	6 - 60 m/min (± 5%)
Motor:	as required

For self assembly, please request parts list and assembly instructions

Description

Article-No.

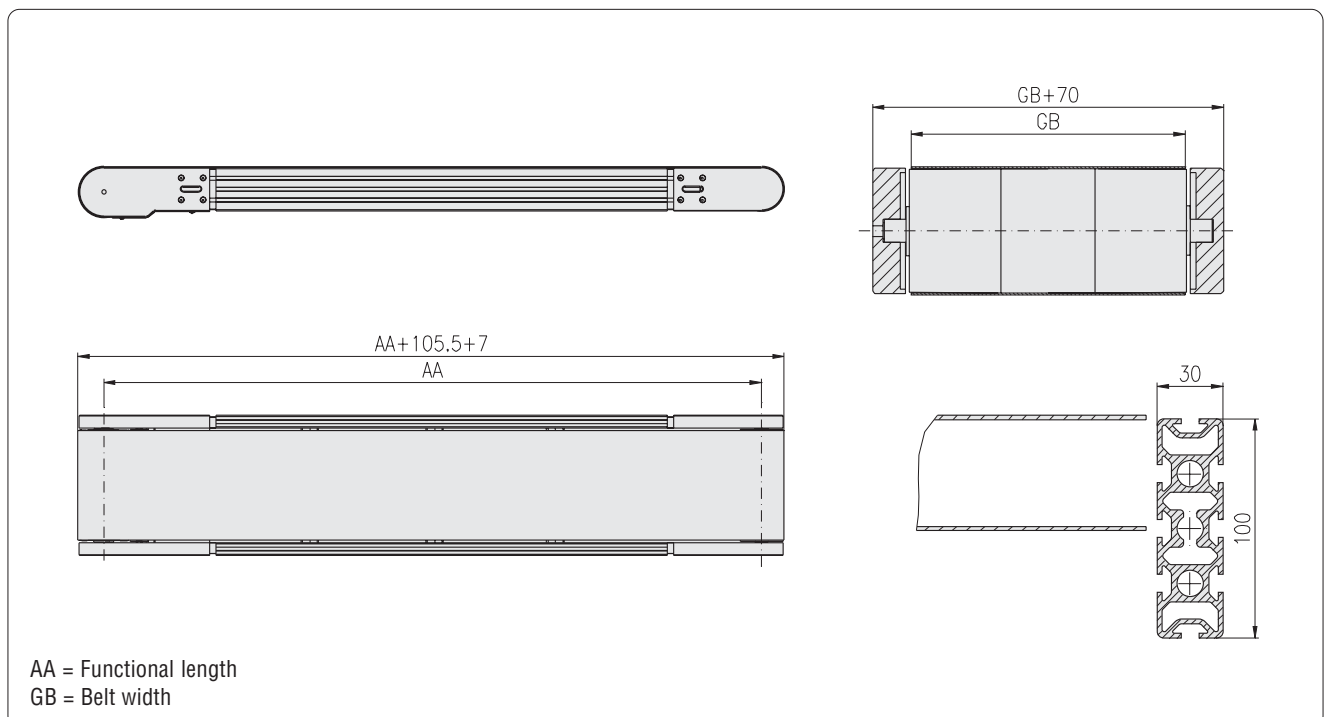
Conveyor, belt running inside, axial cylinder motor, complete 5.111.2421.10030

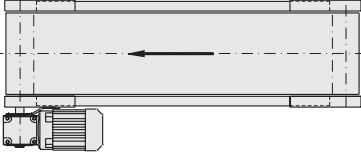

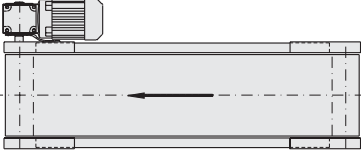

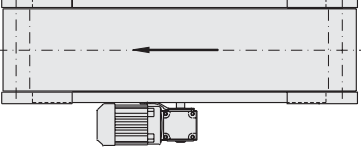
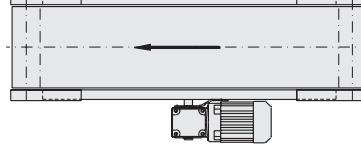
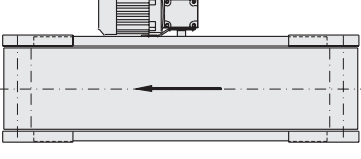
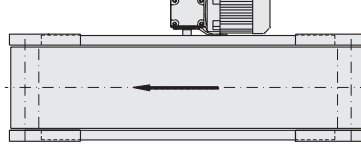
.84P.□□□□×□□□□□

(width×length in mm)

- Profile vertical
- Profile 30x100, 8F, P

Delivery unit without motor



Position of motor	moving direction	
	pulling	pushing
motor "left"		
motor "right"		
motor "center left"		
motor "center right"		

Impressum

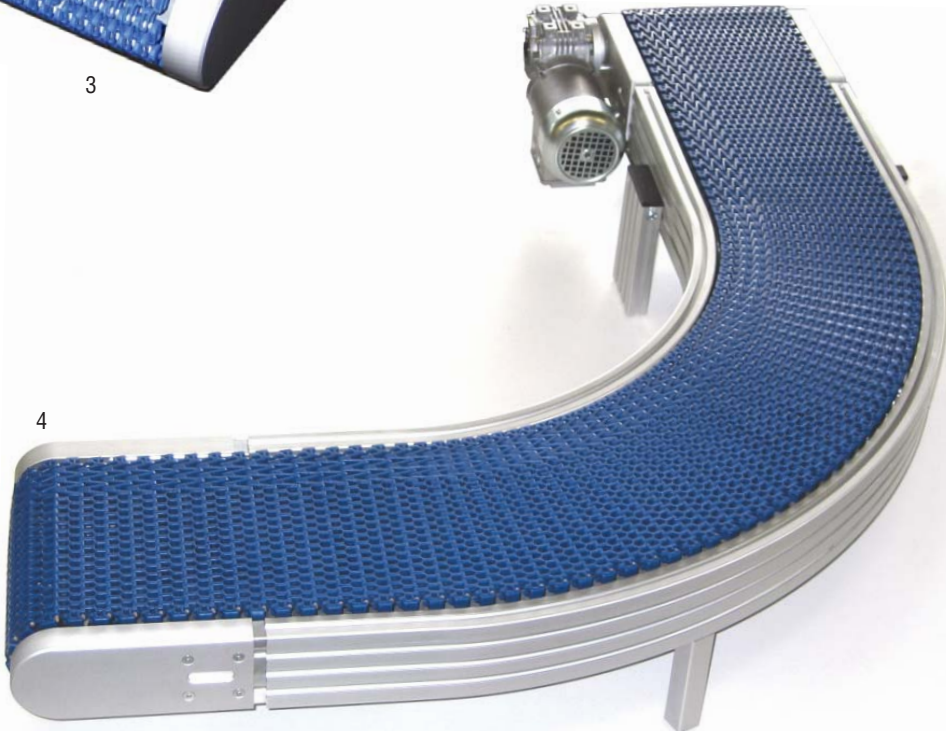
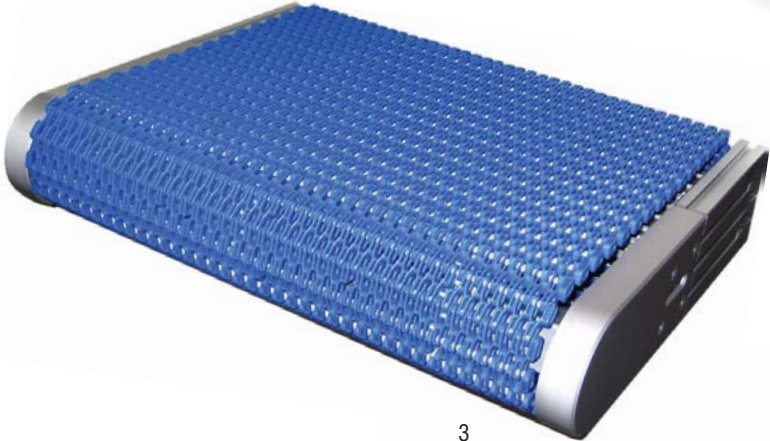
Subject to technical modification.

All rights reserved.

Copying - also in parts - only allowed by written consent.

© MayTec Aluminium Systemtechnik GmbH,
Germany - 85221 Dachau, 2003

- 1 Belt conveyor
- 2 Belt conveyor
- 3 Link chain conveyor, linear
- 4 Link chain conveyor, curved



The key...

to success

30% - 600% more flexible design

20% - 50% more economical machining

60% - 340% quicker assembly

100% - 260% stronger connection

more than 60 service locations

Australia

MayTec Australia P/L
Unit 1, 8 Prosperity Parade
Warriewood, NSW 2102

country code: +61
phone (0) 2 / 9999 0890
fax (0) 2 / 9979 8703
e-mail: info@maytec.com.au
<http://www.maytec.com.au>

Germany

MayTec Aluminium
Systemtechnik GmbH
Kopernikusstraße 20
D - 85221 Dachau

country code: +49
phone (0) 8131 / 33 36 - 0
fax (0) 8131 / 33 36 - 119
e-mail: mail@maytec.de
<http://www.maytec.de>

USA

MayTec Inc.
1625 Dundee Ave., Unit E-F
Elgin, IL 60120

country code: +1
phone 847 - 429 - 0321
fax 847 - 429 - 0460
e-mail: mail@maytecinc.com
<http://www.maytecinc.com>